

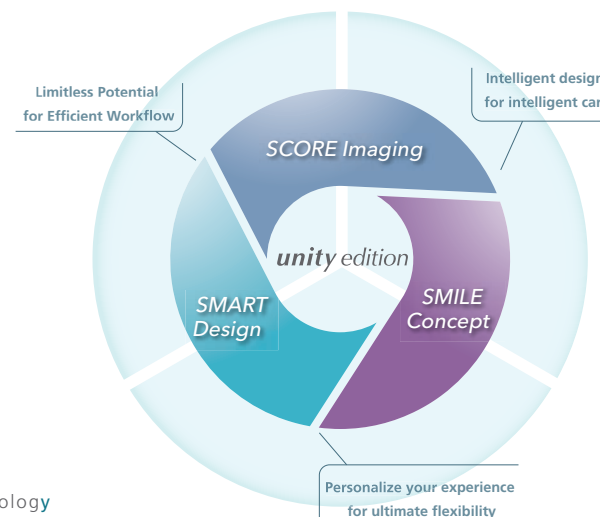
# Trinias B8/C8/F8 *unity edition*

Digital Angiography System



# Spire in Cardiology

Based on our many years of experience, Shimadzu has added the latest advancements in imaging technology to our Trinias system to achieve top-quality patient care in interventional procedures. The result is a patient-centered experience, leaving operators free from worry so they can easily perform all types of interventional procedures. Trinias unity edition sets the bar high with improved functionality with new hardware and software features that provide a simple workflow for cardiac and vascular procedures from head to toe. The system uses Intelligent Design to provide Intelligent Care in minimally invasive procedures. Our technology provides solution to the imaging problems that you face every day.



\*unity = unlimited intelligent technology

Biplane system



B8 unity edition

Single plane system



C8 unity edition



F8 unity edition

Scan me,  
feel Trinias!







# *SCORE Imaging*

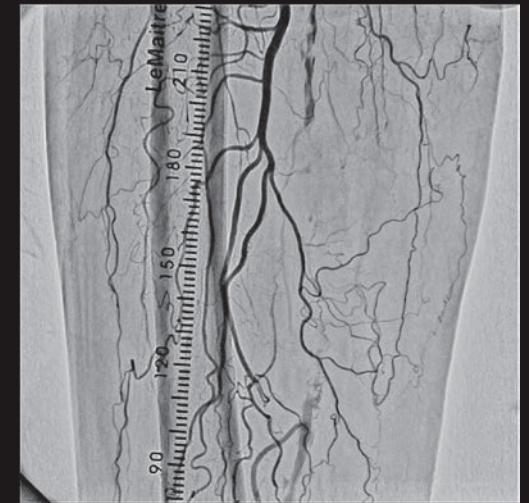
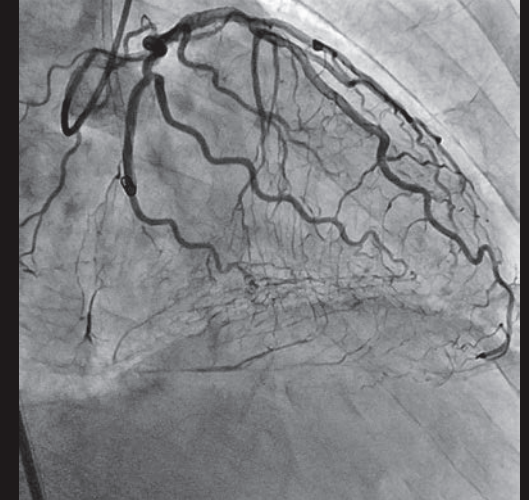
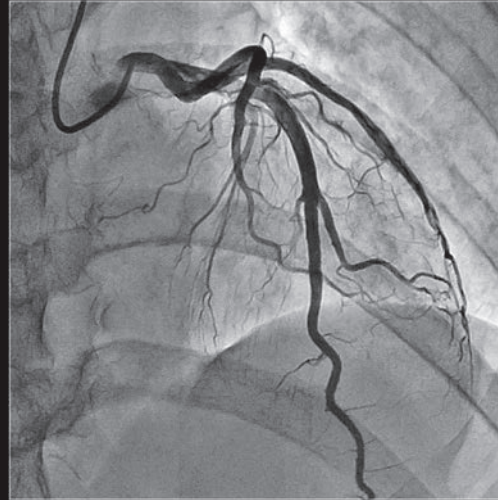
Taking Minimally Invasive Procedures to New Levels

## SCORE PRO Advance

Equipped with advanced functionality for motion tracking noise reduction, and object isolation-based enhancement, the SCORE PRO Advance image processing unit was designed to achieve lower exposure levels and higher image quality.

Shimadzu's real-time image processing technology can isolate fine blood vessels, such as micro vascular arterioles during chronic total occlusion angioplasty (CTO) procedures, by enhancing only the target object without sacrificing image quality or increasing exposure dose. Consequently, Shimadzu supports advanced interventional procedures with even higher quality images.

## SCORE PRO $\frac{1}{2}$ Advance DOSE



### Even Lower Exposure Dose Levels

The higher image quality offered by SCORE PRO Advance represents another step forward in the advancement of minimally invasive (low dose) procedures. By using an optimal combination of the low-dose mode and low pulse rate, optimized for each examination, Trinius systems can be expected to reduce exposure levels by about 50 % per examination while also providing high image quality.





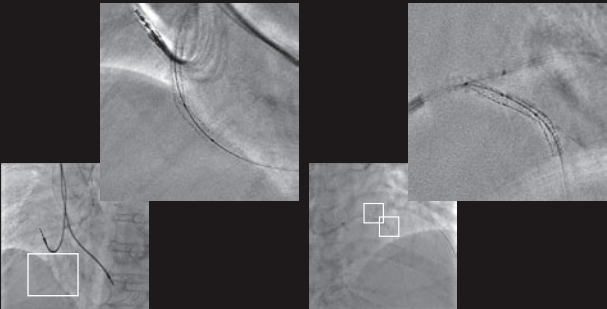


## SCORE StentView OPTION

SCORE StentView is the latest, advanced version of StentView, considered truly revolutionary by many clinical users, allowing you to enhance stents and adjust the position in dynamic images in real time. The function for specifying the region of interest (ROI) now allows multiple markers to be used for automatic detection, which contributes to higher detection efficiency and shorter examination times.

### Regions of Interest Can Be Specified

Specifying a region of interest (ROI) improves device detection efficiency, even if multiple devices are present.



1. Specify regions with an ROI

The automatic recognition only identifies the marker within the ROI, regardless of how many markers are in the field.

2. Specify markers with an ROI

If there are multiple devices, due to bifurcations, identification markers can be specified for each device.



Stent overlap

Post balloon

### Real-Time Observation Without Looking Away

Simply pressing the [StentView] button and pressing the foot switch automatically displays the StentView image on the live monitor that the operator is watching. Because StentView images can be viewed in real time without looking away from the live monitor, StentView can be used without interrupting the procedure.

## SCORE StentShot ~High definitive device visualization~ OPTION

Outstanding stent visualization with SCORE StentShot enhances patients' safety and reduces treatment time. This application provides a static noise free, stent enhanced image, for optimum post-deployment stent visualization.



SCORE StentShot

## SCORE RSM

SCORE RSM is an extremely motion-tolerant DSA technique, achieved through Shimadzu's high-speed digital image processing technology. This application is especially effective for tracking vessels across the entire lower extremities, for 3D imaging in combination with C-arm precession and pendulum modes and for examinations on patients who have difficulty holding their breath.

View images from multiple directions with a single imaging session

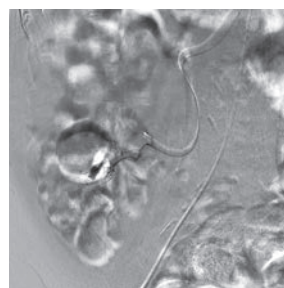
Precession mode



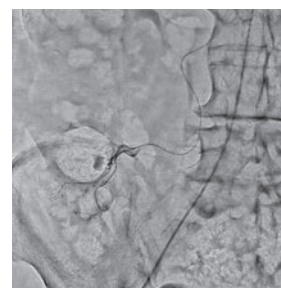
Pendulum mode



New Type of DSA Unaffected by Breathing Movements and Intestinal Gas



Normal DSA



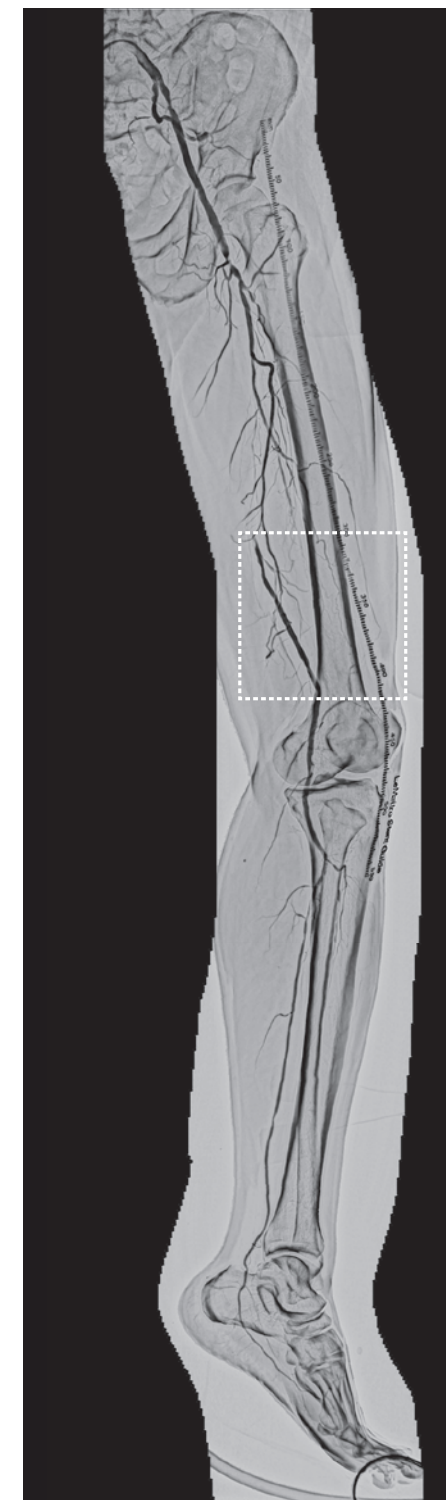
SCORE RSM

## SCORE Chase OPTION Improves Visibility of Entire Lower Extremities Area

Shimadzu SCORE Chase enables freely panning longitudinally or laterally during exposures to trace blood flow through blood vessels. After exposure, SCORE Chase instantly creates a positionally-corrected stitched image automatically and displays it on the monitor so that the overall blood flow through blood vessels in the lower extremities can be determined easily.

## Display of Radiation area without fluoroscopy

In conjunction with the patient table top position and FOV, it is possible to display the current radiation area in real time on the long-view image without fluoroscopy. This is useful for radiation reduction and smooth examination workflow.







## ChaseMAP\* produces roadmap without re-acquiring contrast phase

Since the long-view image acquired via SCORE Chasse is used as the contrast phase, it is only necessary to acquire a MASK phase image at region off interest in order to produce a roadmap. Utilizing this function effectively leads to a reduction of contrast medium and dose.

## Linking Images to the Catheterization Table\*

When used in combination with a multifunctional catheterization table, SMART Table, stitched images are linked to the table position, so that the SMART Table is automatically repositioned based on the region of interest during magnification or panning within that image.

Minimally invasive procedures of the lower extremities are supported by moving to the region of interest more smoothly and rapidly.

\*This function is available only with SMART Table option

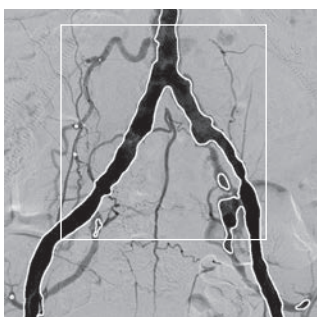
## SCORE MAP

Trinias includes a wide variety of roadmap functions that can be selected based on the body area, procedure, and technique in interventional procedures.

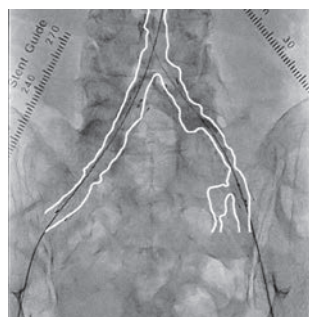
Because MAP image settings are kept associated with images even after changing the field of view or magnifying the image or after switching to the frontal or lateral views, MAP functionality can be used without repeating exposures for MAP purposes.

### TraceMAP

The TraceMAP function dramatically improves the visibility of wires and devices by automatically overlaying an outline of vascular walls isolated from DSA images onto fluoroscopic images. It can be used for aortic stent grafts and supports endovascular treatment (EVT) of arteries in the lower extremities.



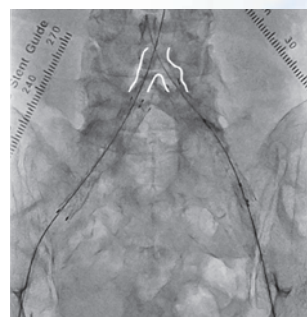
Automatic Trace



TraceMAP at ROI

### Sketch function

This function enables easily drawing guide lines manually on fluoroscopic images.



Sketch function

### FluoroMAP

This applies a subtraction process to the current fluoroscopic image and uses the resulting image of blood vessels as a MAP image. Because it does not require any additional exposures for the MAP function, it results in reducing the contrast media and exposure levels used. Either a without-bone or with-bone display mode can be selected.

### BlankMAP

Fluoroscopy, this function displays the blank frame with only the subsequent changes enhanced. It can be used for coil or liquid embolization of tumors in the head region, for example.

### DSA-MAP

The DSA-MAP function displays DSA images overlaid on fluoroscopic images. Either a without-bone display mode, used for areas such as the head, or a with-bone display mode that retains the bones for use as a reference can be selected.



DSA-MAP



DSA-MAP





## Flex-APS ~Advanced real-time pixel shift for DSA~

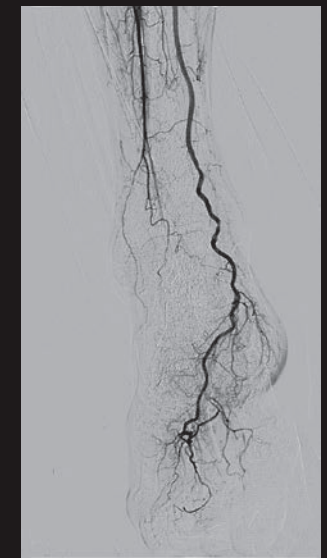
Flex-APS saves time by automatically adjusting three-dimensional misregistration caused by all body movements, including twist motion, providing enhanced DSA imaging.



Flex-APS off



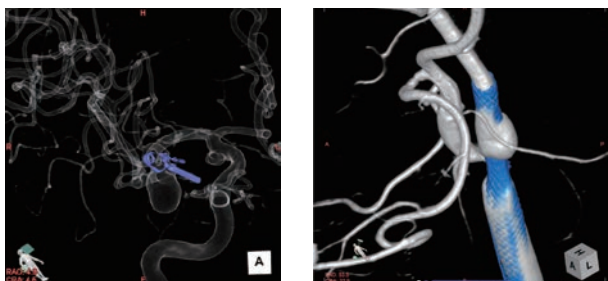
Motion Vector



Flex-APS on

## SCORE 3D OPTION

The SCORE 3D application allows rapid display of the 3D reconstructed images automatically after rotational radiography. With a top rotational image acquisition speed of 60 degrees per second, the shorter contrast medium injection time reduces the burden on patients while suppressing the impact of movements on the images and ensuring high image quality. In addition, operability has been dramatically improved thanks to easy GUI customization via the pallet function.



### Palette Function

User-customizable user interface





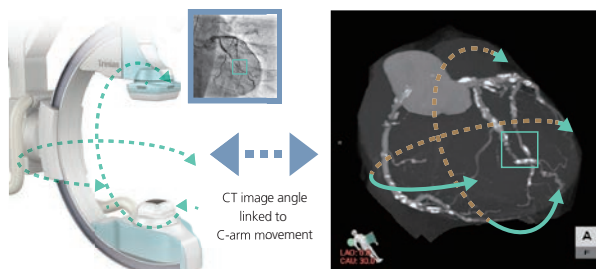


## SCORE Navi OPTION / Navi+Plus OPTION

SCORE Navi/Navi+Plus is an application that utilizes preprocedural images to support minimally invasive interventions. By synchronizing the C-arm projections to pre-procedure MDCT images, the system enables these MDCT images to be used as a reference during interventions, reducing contrast media usage and X-ray dose. Automatic registration of the MDCT images with live fluoroscopy images is easily achieved. With the MDCT image overlaying the live fluoroscopy it allows you to adjust the rate of blending. The Navi+Plus application also includes a virtual stent feature that allows you to simulate the stent size and placement position before carrying out a procedure.

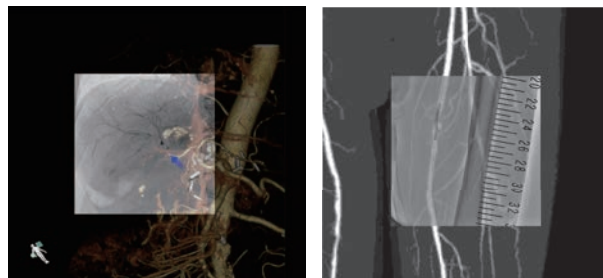
### Bi-directional angle linkage between C-arm and MDCT image

Reference CT image tracks C-arm movement.



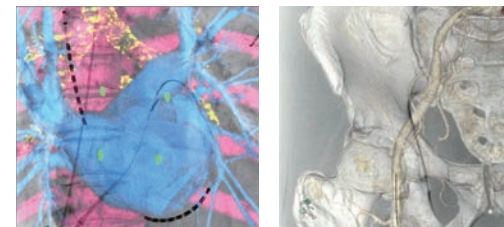
### Wide-Area CT Plus Fluoroscopy Display

Supports additional dose reduction by reducing the fluoroscopy aperture.



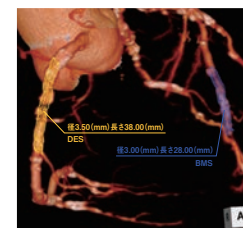
## SCORE Navi+Plus

Overlay preprocedural CT and fluoroscopic images.  
The C-arm and 3D image can be linked in both directions.



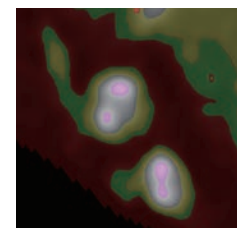
### Virtual Stent

Simulates optimal stent size.



### Color distribution

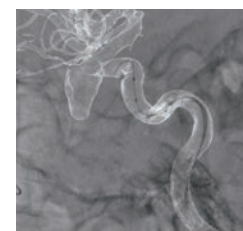
CT values can be used to evaluate the nature of the stricture.



## SCORE Navi

### 3D Road Map

Overlay a transparent image on a fluoroscopy image.



★SCORE Navi+plus includes all the function of SCORE Navi



# *SMART Design*

Changing the way. Making it possible.

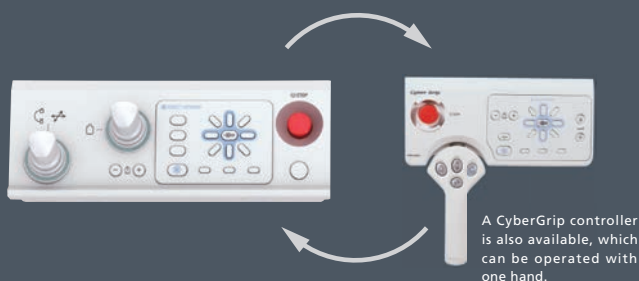


## SMART Assist

The system has been designed for single-action performance to make system control in the examination room and control room as simple as possible. This improves efficiency during procedures.

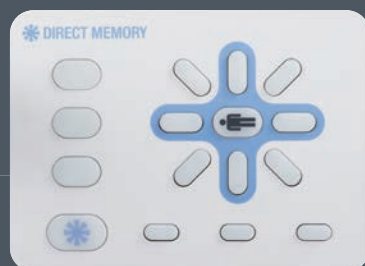
## C-Arm Controller

The C-arm can be freely controlled using a lever-type Cyber Console.



## Direct Memory

Registered clinical angles can be called up intuitively using a graphical controller layout.



## SMART Access

The single-plane system is available either with a ceiling-mounted (C8) or floor-mounted (F8) model C-arm. Both models are designed to provide a broad operating range. The system layout can be freely configured based on the procedures performed and can flexibly accommodate installing peripheral equipment as well.

### Ceiling C8

#### Wide Coverage Reduces the Burden on Patients

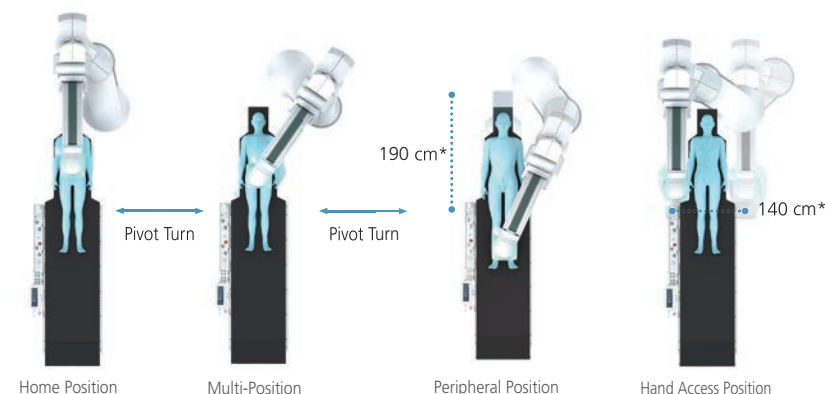
The ceiling-mounted C-arm is capable of full-body coverage without moving the patient, thanks to 210 cm wide transversal coverage direction and 190 cm longitudinally. Transverse movement, in particular, supports a safe radial catheterization approach.



### Floor F8

#### Six-Axis Triple-Pivot Construction for Full-Body Coverage

A total of six axes are provided for the base and rotational axes of the floor-mounted C-arm, achieving wide coverage. In particular, the triple-pivot construction of the base enables freely adjustable arm positioning and also allows transverse movement for radial access.



\* Stated length (cm) describes total X-ray imaging range added to C-arm movement, table top movement, and FPD field of view.

# B8

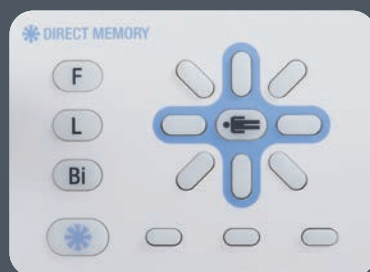
## SMART Assist

The system has been designed for single-action performance to make system control in the examination room and control room as simple as possible. This improves efficiency during procedures.



## Direct Memory

Registered clinical angles can be called up intuitively using a graphical controller layout.



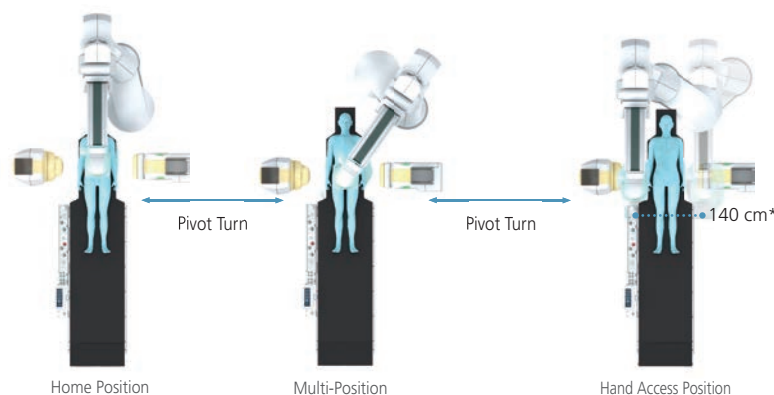
## SMART Access

Our faster c-arm and six axis triple pivot on the floor provides a quick and easy set up for even the most complicated procedures. Our industry leading SMART Access provides full access around the table, leaving the head end open for physicians and staff, when necessary.

Bi-plane **B8**

## Accessible as Single System with B8 Lateral C-Arm

The frontal C-arm can be freely set up as easily as a single plane system without changing the lateral C-arm.

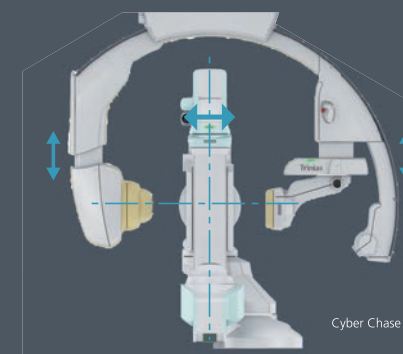


By retracting the lateral C-arm, the lower extremities and other areas in the longitudinal direction are also easily accessible.



## CyberChase Function Automatically Follows Areas of Interest

The ceiling gantry offers a vertical movement of 17.5 cm of the imaging chain to permit rapid biplane positioning to a region of interest, without altering the table height. The CyberChase function automatically follows the area of interest, even when the angle is changed, to ensure rapid and accurate positioning.



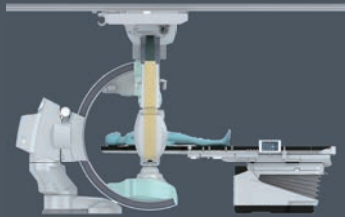


## High Speed C-arm Movement Supports Fast Workflow

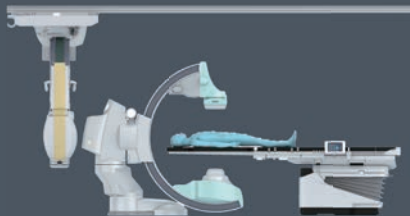
The high-speed frontal arm positioning of 25°/s in single-plane mode or 15°/s in biplane mode allows rapid switching between single plane and biplane operation providing a stress-free, smooth operating environment.

Biplane positioning 15°/s ↔ Single plane positioning 25°/s

Bi  
plane



Single  
plane



# Multifunctional SMART Table Accommodates a Variety of Procedures and Techniques

Smart Table can be configured for approaches based on complicated procedures and techniques in various areas, from cardiovascular and head areas to lower extremities, to accommodate a wide range of imaging.



Smart Table can be operated either manually with the ergonomic mushroom handle or electronically with the table control buttons. Smart Table can also be synchronized to imaging, so that Smart Table is positioned within the region of interest after zooming/panning.

Supports a Broad Range of Lower Extremity Areas

Tilt Function Adjustable Based on Procedure/Technique



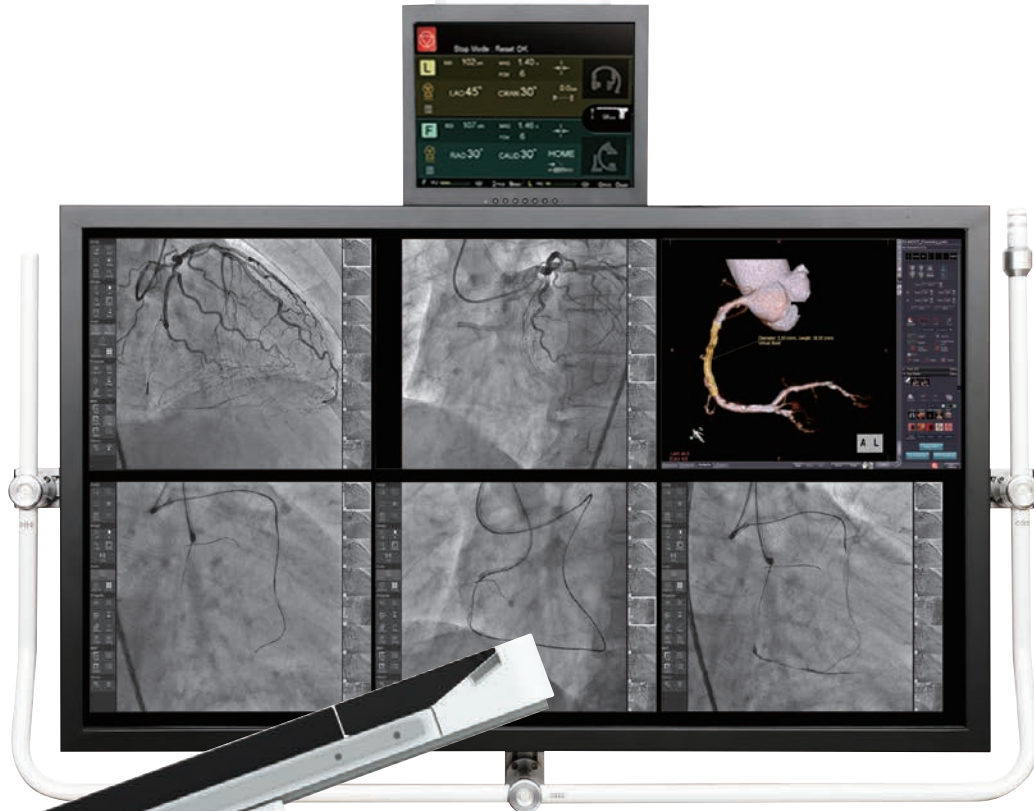
\*It can also be combined with regular catheterization tables.

## Multifunctional Wireless Foot Switch Optional

With no cables on the floor, it is easy to position the foot switch where the operator is standing.







## SMART Display Optional

With the large 58-inch high-resolution color LCD and touch panel controller, the operator can select the optimal display of image data to suit the current procedure.

## SMART Touch Provides Smooth Operability

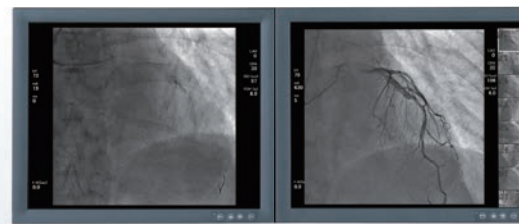
All screen operations are consolidated in one place on the touch panel, including for changing the fluoroscopy/radiography program required during surgical procedures, switching between a wide variety of functionality, and selecting images. By making operations easier to understand and intuitive, it supports a more sophisticated use of surgical procedures and techniques.

## Dynamic Reference

Reference images can be changed, replayed, or paused during fluoroscopy. Moving images from before and after surgical procedures can be compared and replayed.

Live Monitor

Reference Monitor



Changes, plays back, and freezes reference images during fluoroscopy. A thumbnail function enables immediate display of reference images.



## Parallel Processing Achieves an Efficient Workflow

A multiprocessor enables parallel image processing during examinations providing an efficient workflow.



# *SMILE Concept*

Safety + Comfort = SMILE



## Patient-Friendly Clean Design

The color design creates a slim form and clean look.



## SMILE Dose-eye

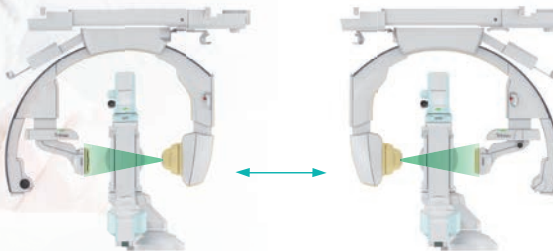
### ■ Seven Features That Reduce Exposure

SMILE Dose-eye achieves an excellent system-wide optimization between lower dose and high image quality.

- |                               |  |
|-------------------------------|--|
| 1 MBH Filter                  | Effectively eliminates unnecessary soft X-rays.                |
| 2 Pulsed Fluoroscopy          | Select from 10 different rates depending on the procedure.     |
| 3 Grid Control                | Blocks unnecessary soft radiation.                             |
| 4 Virtual Collimation         | Enables collimation without fluoroscopy.                       |
| 5 Image Processing            | SCORE PRO Advance ensures lower dose and higher image quality. |
| 6 Fluoroscopy Video Recording | High-definition fluoroscopy can substitute for radiography.    |
| 7 Area Dosimeter              | The monitor displays the actual dosage in real-time.           |

### ■ LL↔RL switching

X-ray tube left or right positioning (LL↔RL) with single button operation. Switching the X-ray tube position for each examination alleviates the concentrated X-ray exposure at a specific position on the patient.



## SMILE Recovery

### ■ High-Speed Setup

All functions are available within two minutes after the power is turned ON.

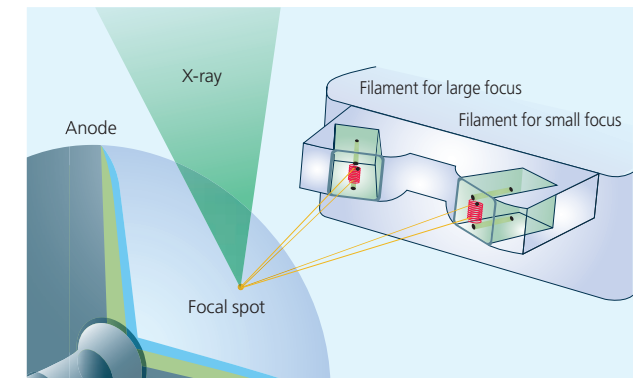


### ■ Data Mirroring

The mirroring architecture provides data storage redundancy.

### ■ Backup Filament

If a filament burns out during an examination, the other filament will be automatically selected so the examination can be continued.



# Even More Worry-Free and Reliable Japanese Quality for Interventional Procedures

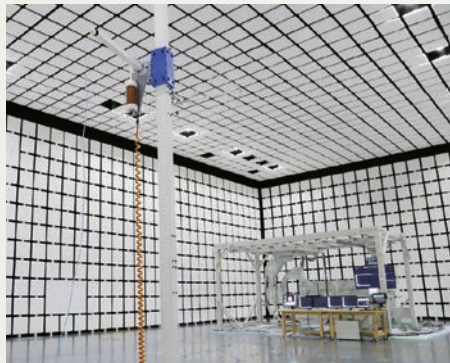
## All Processes, From Production to Quality Control and Shipping, Performed Within Shimadzu

Shimadzu manufactures Trinias products at Shimadzu's own advanced technology plant, where all processes from production to quality control and shipping are performed within the Shimadzu facility to ensure Trinias products are delivered with the highest quality.



## Advanced Quality Center Ensures High Quality

Within the Shimadzu facility, Shimadzu has built a Quality Center that is equipped with state-of-the-art equipment for various evaluation and analysis necessary to ensure that only the highest quality products are delivered. The Quality Center is also used for product development, quality assurance, and to ensure compliance with various regulations and standards.



- SUBSIDIARIES
- OFFICE
- J.V.
- Sales & Service Agents



## Worldwide Service Network

## Proactive Service Support Program

### Periodic Maintenance

- Our professional service experts visit periodically and inspect the system.
- Mechanical, electrical and safety checks are performed. Calibration is carried out whenever necessary to ensure optimal system performance.

### Emergency Service Support

- Shimadzu local service centers ensure rapid response times.
- On-call support is available for your emergency needs.

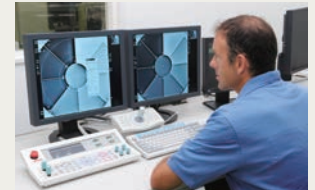
### Parts Warranty Program

- A selection of parts warranty programs is available for you selection to manage your service needs and plan your running costs.

### Remote Maintenance Service

The Shimadzu "Site-View" provides you with remote maintenance service.

- In the event of possible system errors, the Site-View automatically generates an alert message for proactive service support by our field service engineers.
- Remote maintenance team will support your Trinias system with Shimadzu "Site-View" care programs.
- Our system experts periodically analyse system log files through Site-View.



Encrypted Network



Remote Maintenance Center



Founded in 1875, Shimadzu Corporation, a leader in the development of advanced technologies, has a distinguished history of innovation built on the foundation of contributing to society through science and technology. We maintain a global network of sales, service, technical support and applications centers on six continents, and have established long-term relationships with a host of highly trained distributors located in over 100 countries. For information about Shimadzu, and to contact your local office, please visit our website at [www.shimadzu.com](http://www.shimadzu.com)



## Shimadzu Corporation

### Headquarters

1, Nishinokyo-Kuwabara-cho, Nakagyo-ku, Kyoto 604-8511, Japan  
<https://www.shimadzu.com/med/>



Management  
System  
ISO 9001:2015  
ISO 13485:2016

[www.tuv.com](http://www.tuv.com)  
ID: 0091004755

Shimadzu Corporation Medical Systems Division has been certified by TÜV Rheinland as a manufacturer of medical systems in compliance with ISO9001:2015 Quality Management Systems and ISO13485:2016 Medical Devices Quality Management Systems.

### Remarks:

- Every value in this catalogue is a standard value, and it may vary a little from the actual at each site.
- The appearances and specifications are subject to change for reasons of improvement without notice.
- Items and components in the photos may include optional items. Please confirm with your sales representative for details.
- Certain configurations may not be available pending regulatory clearance. Contact your Shimadzu representative for information on specific configurations.
- Before operating this system, you should first thoroughly review the Instruction Manual.