

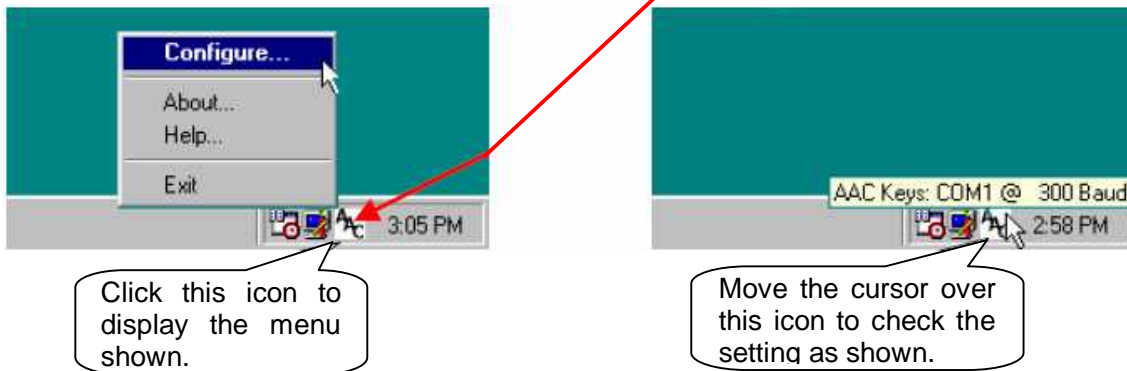
To the customer (4 pages):

Windows Access Settings for Windows Vista

Shimadzu Corporation

Microsoft has released its latest operating system, "Windows Vista". In principle, the serial key device function that was available as an accessibility option with previous systems is no longer included, and to set Windows access it is necessary to set up the special tool "AAC Keys" using the procedure described below.

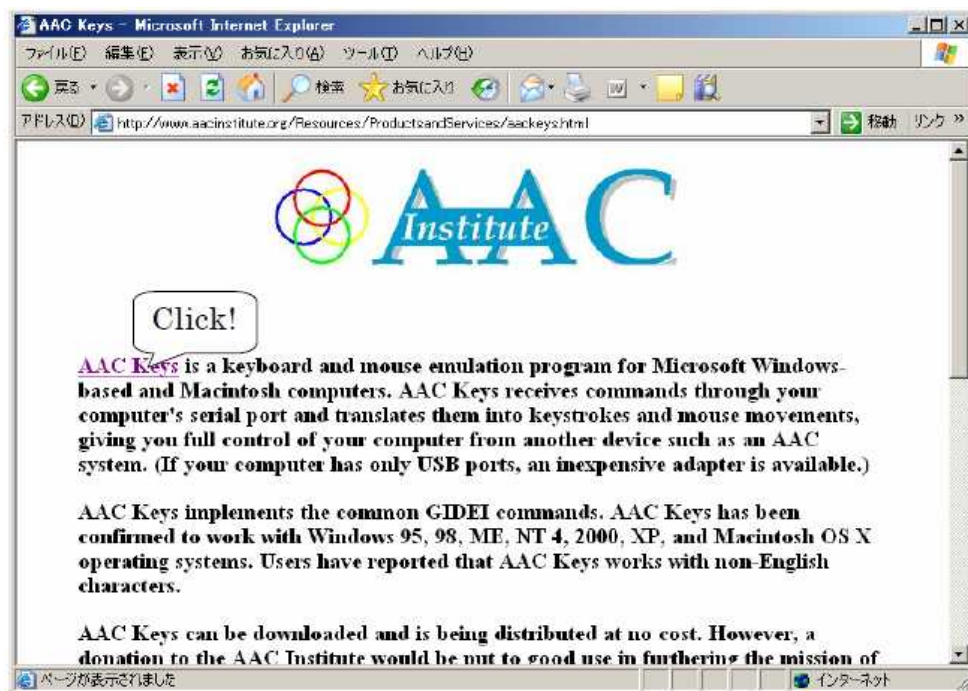
With previous systems, it was necessary to open "Accessibility Options" from the Control Panel to make the required setting. With AAC Keys, the icons shown below are displayed in the taskbar at the bottom-right corner of the screen when the system is started, making it comparatively easy to confirm the setting.



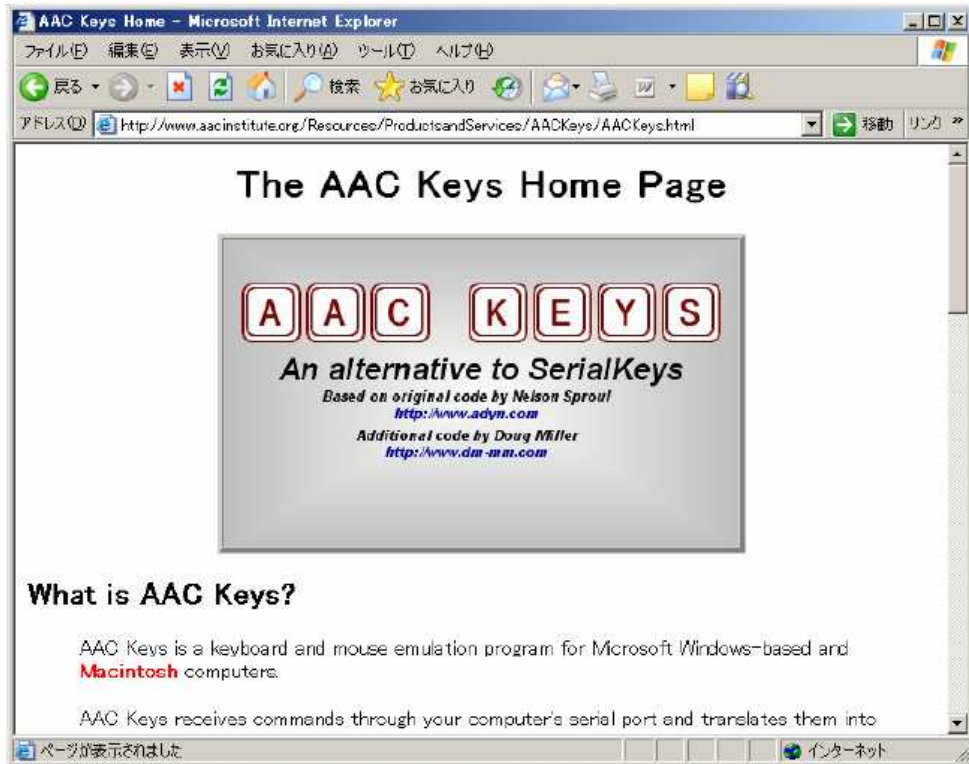
1 Download

From a PC with administrative privileges and a LAN connection, go to the URL shown below, and click "AAC Keys", which appears at the start of the text.

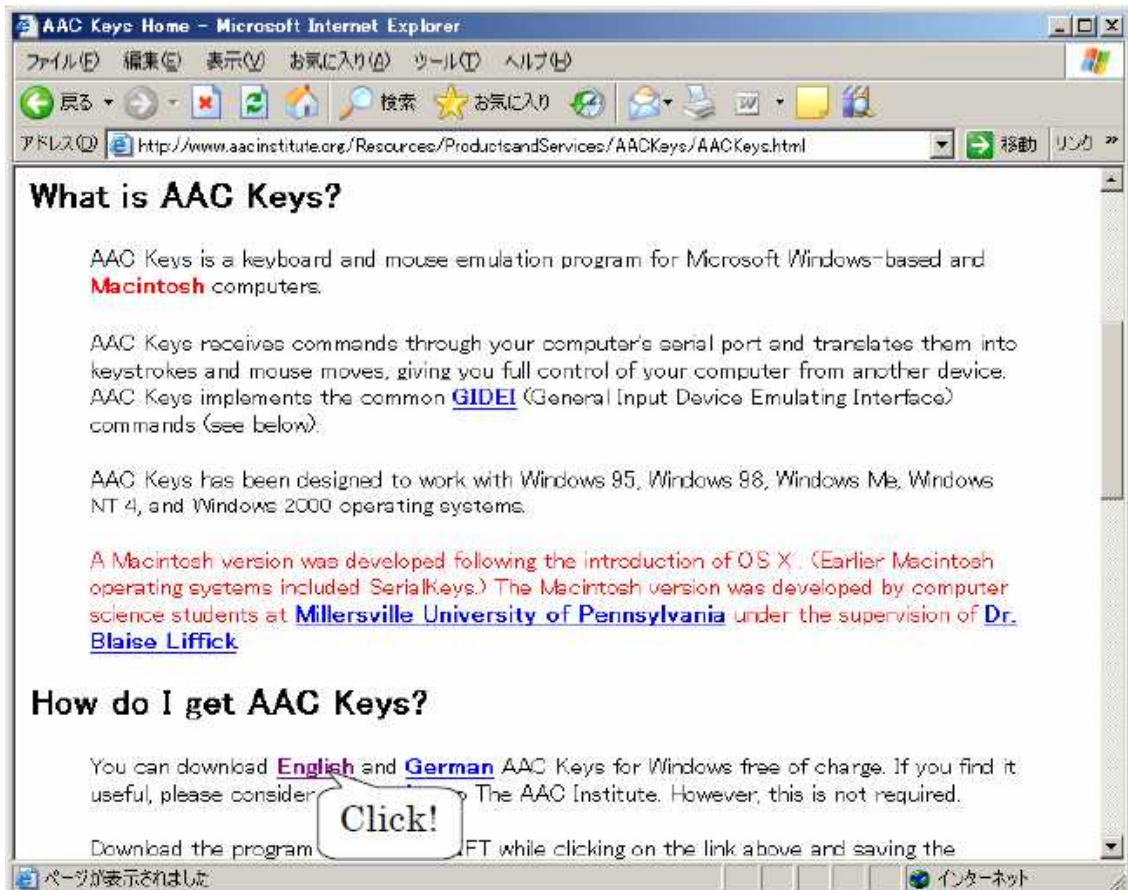
<http://www.aac institute.org/Resources/ProductsandServices/aackeys.html>



"The AAC Keys Home Page" is displayed as shown below.



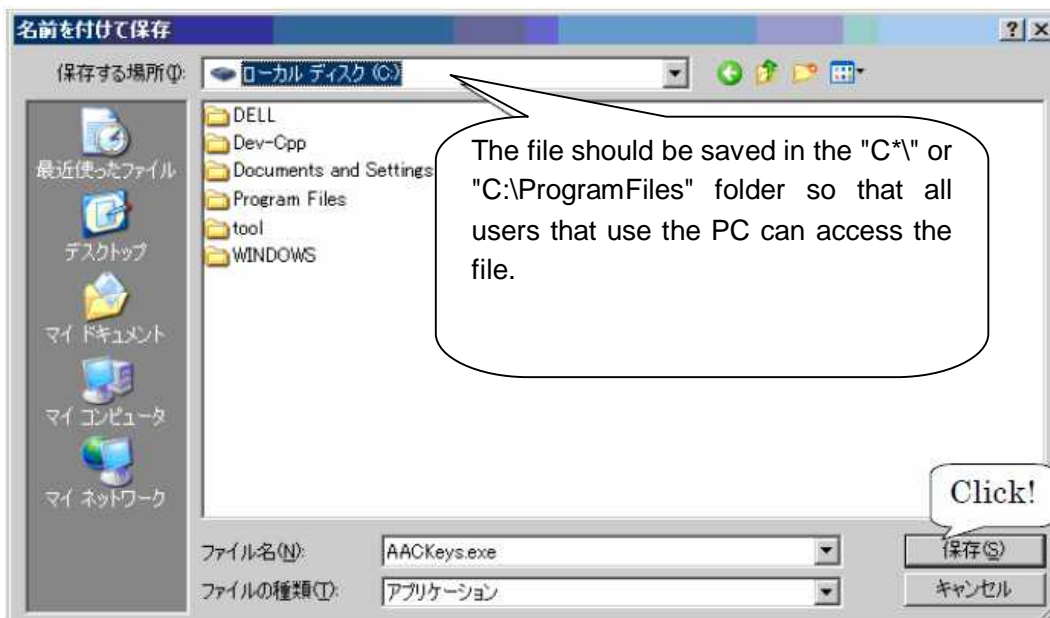
Click "English" under "How do I get AAC Keys?"



Click [Save] as shown below.



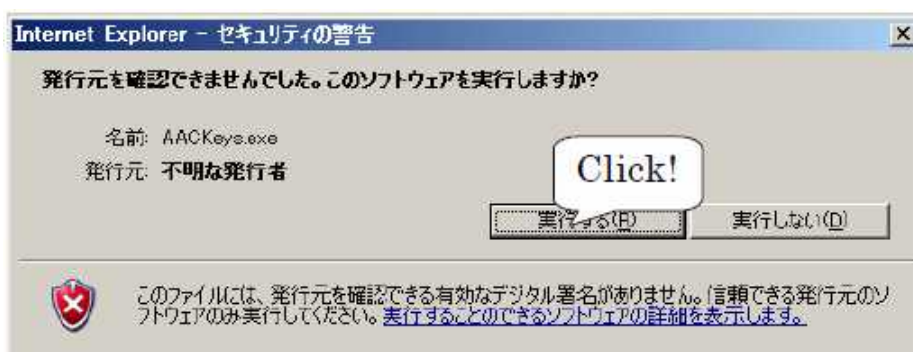
Specify the save destination, and with the default file name, click the [Save] button.



Check that the executable file "AACKeys.exe" has been downloaded to the specified destination. Double-click the file to execute it. An icon indicating that the file is being executed is displayed in the taskbar at the bottom-right corner of the screen.



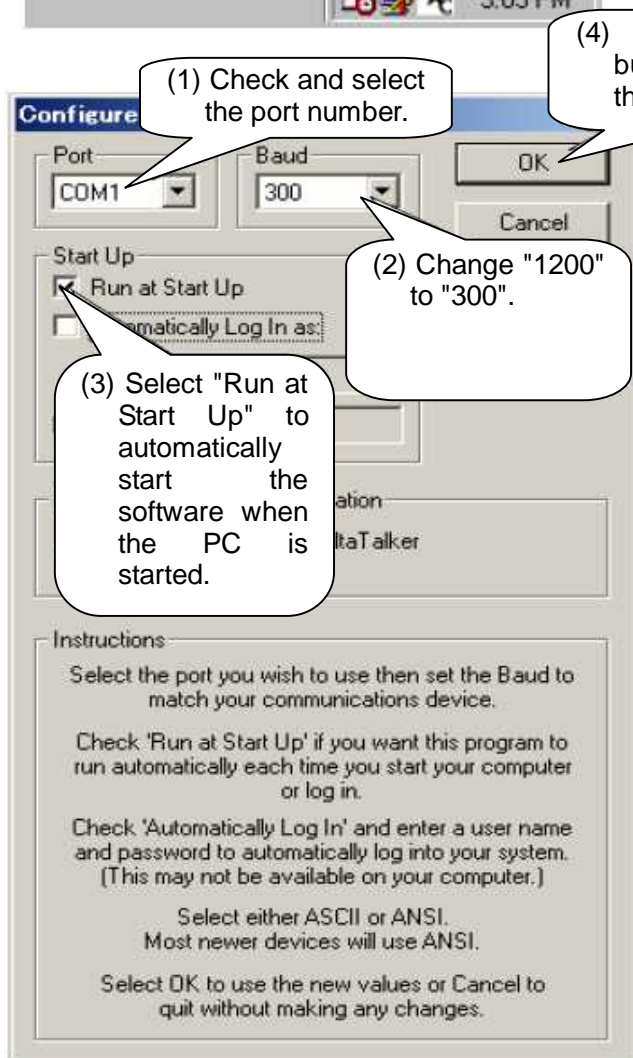
If the security warning window shown below is displayed, ignore it and click the [Execute] button.



2 Communications Settings



When "AACKeys.exe" is executed, the [AAC] icon is displayed in the taskbar at the bottom-right corner of the screen as shown on the left. Click the icon to display the menu, and select [Configure].



The "Configure" setting window opens as shown on the left. Set and/or check the following items.

- (1) Check and set the (communications) port number. The setting range is COM1 to COM16.
- (2) Change the baud rate from "1200" to "300". After making the setting, click the "OK" button to enable it.
- (3) If you want the software to start automatically when the PC is started, select "Run at Start Up".
- (4) After completing the settings, click the "OK" button to enable the changes.



An "Error" window indicating that the COM port could not be opened normally, like the one on the left, may be displayed. Operation may be continued, however, if no irregularities are found in a routine operation check.

This completes the setting procedure. Perform an operation check to make sure that the values displayed by the balance can be acquired normally.