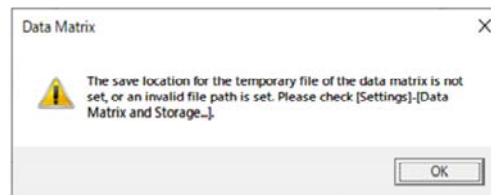


# Setting a file location for saving temporary data matrix files

(On initial startup only)

## Settings are needed on the first start-up

- If the save settings have not been specified, the following error message will appear:

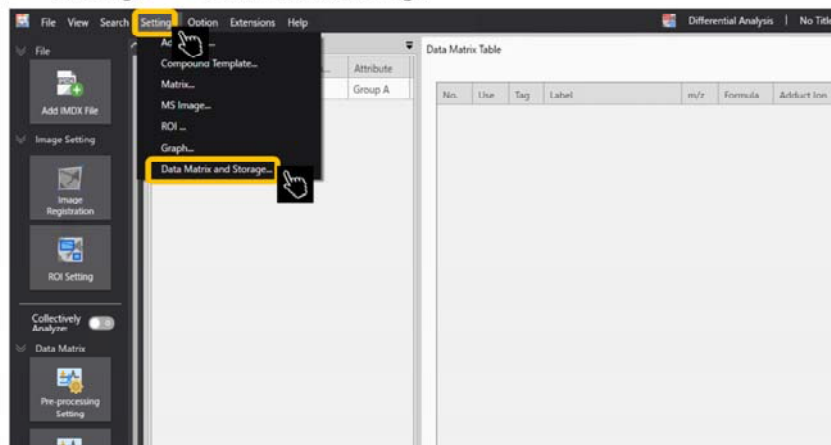


When first installed, it is necessary to specify a file save location for the temporary data matrix files.

If these are not specified, a warning message will appear: "The save location for the temporary file of the data matrix is not set, or an invalid file path is set. Please check [Settings]-[Data Matrix and Storage...]."

# Applying settings

Menu bar → “Settings” → “Data matrix/Storage”



## Indicate the save location for temporary files

The screenshot shows a dialog box titled "Data Matrix Storage Setting". It contains several configuration options:

- Data Matrix Temporary File Save Location:** A text input field containing "H:\", highlighted with a yellow box and a hand cursor.
- Number of IO Queues Per Thread:** A spin box set to 16.
- Number of IO Threads:** A spin box set to 1.
- RAID0:** A checkbox labeled "Use" which is currently unchecked.
- Block Size:** A spin box set to 65536.
- Number of Drives:** A spin box set to 1.

At the bottom of the dialog are "OK" and "Cancel" buttons.

It is recommended to use an SSD as the temporary file save location.  
It will have a great effect on the processing speed.

Save location for temporary data matrix files: If the data matrices are large, set a temporary file location. It is recommended to set this location as an SSD drive.

Number of IO Queues Per Thread: Set the number of IO queues for each read thread. Usually it is no problem to leave it as the default value of 16.

RAID0: If the specified temporary file save location uses RAID0, tick the box. For a drive which does not use RAID0, leave the box blank (default).