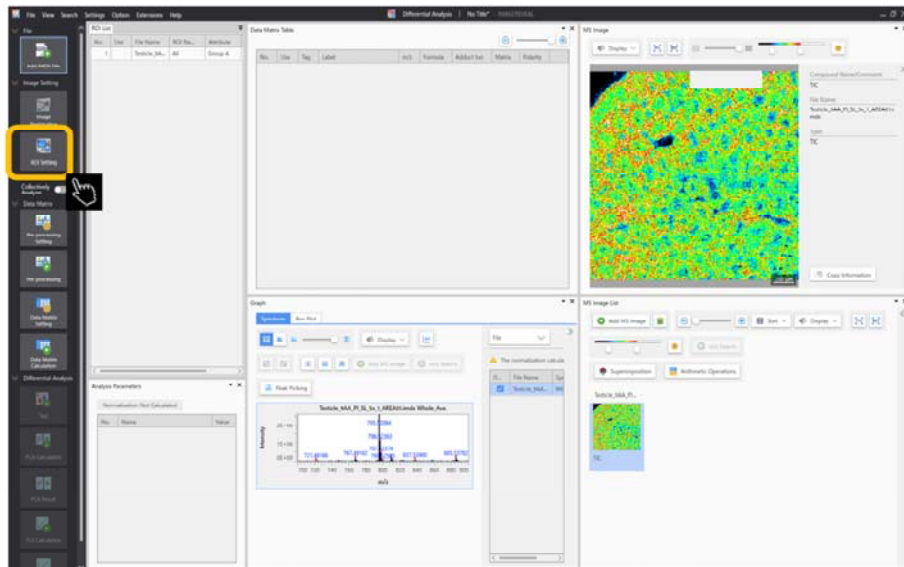


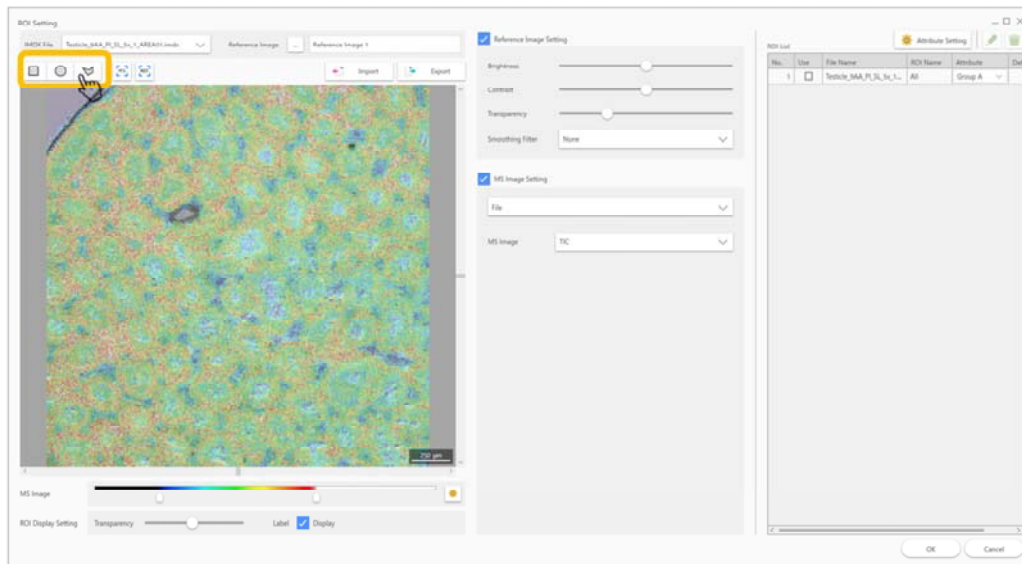
Saving the shape of the ROI

ROI settings



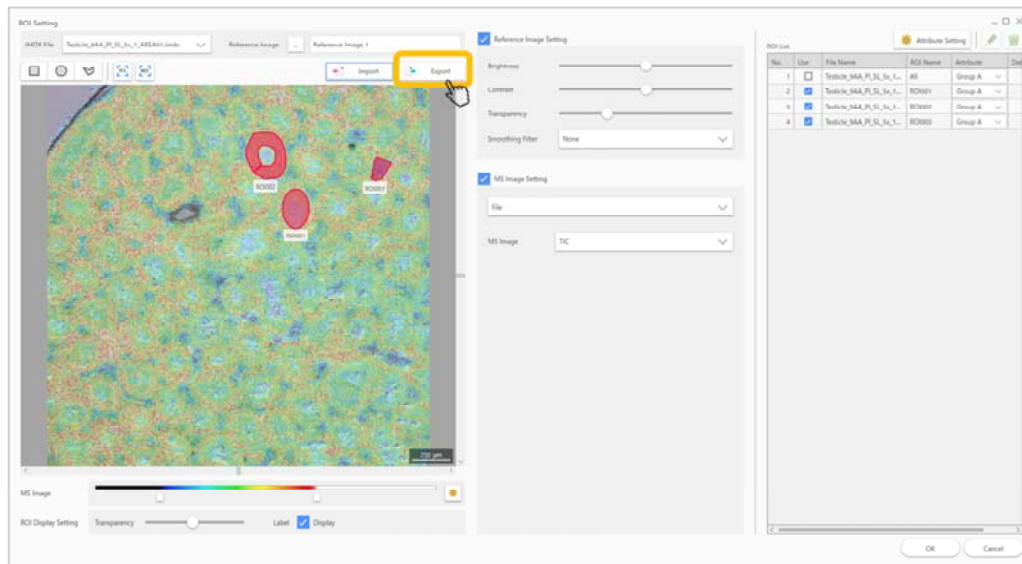
We will apply the settings for our regions of interest.

ROI settings



It is possible to select a region of interest as a rectangle, circle or polygon.

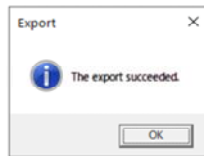
Click the “export” button



After selecting the regions of interest, we set the attributes.
(It is necessary to apply settings for 2 or more attributes in order to evaluate them)

Name and save the file (.rois)





Cautions

- At the moment, the ROI shapes and locations have been recorded, but their attributes have not.
- When importing the ROIs, please set their attributes.