

Tagging

## About tagging:

- In IMAGEREVEAL MS, data can be displayed in various forms such as tables, images and graphs.
- To aid understanding, colours can be added to specific data.
- This is referred to as “tagging”
- The colour selected will be shown in all data displays

In IMAGEREVAL MS, data can be displayed in various forms such as tables, images and graphs.


To aid understanding, colours can be added to specific data.

This is referred to as “tagging”

## Example of tagging: Main screen

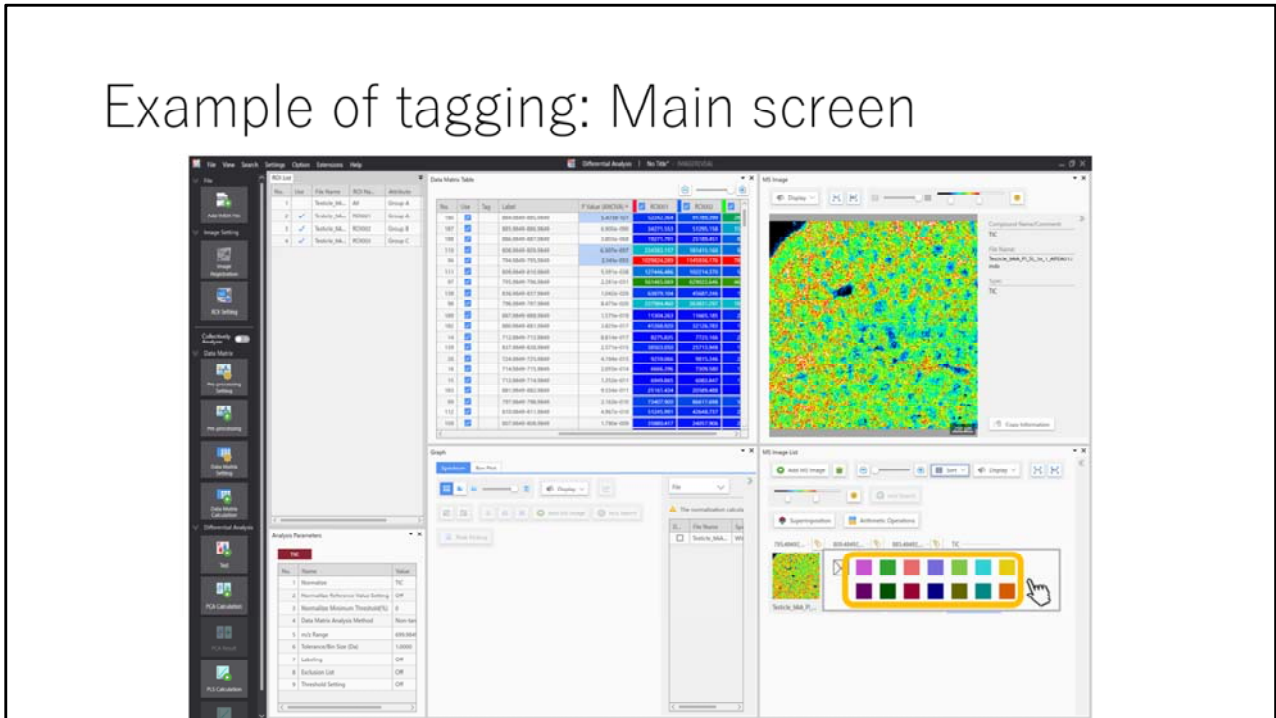
The screenshot displays the main interface of the Differential Analysis software. It features several panels:

- Data Matrix Table:** A table with columns for 'No.', 'Label', 'F Value (D2/D1)', 'P Value', and 'FDR'. It lists various data points with their corresponding values.
- MS Image:** A large heatmap visualization showing a complex pattern of colors (red, yellow, green, blue) representing different mass spectrometry data points.
- MS Image List:** A list of four MS images, each with a small thumbnail and a label: 'Sort', 'Sort', 'Sort', and 'Sort'. A green box highlights the 'Sort' label in the first image, and a red box highlights the 'Sort' label in the second image.
- Graph:** A panel for visualizing data trends, currently showing a flat line.
- Analysis Parameters:** A sidebar on the left containing various settings and options for the analysis.

✳Click  if "Sort" in the MS image list is "compound".

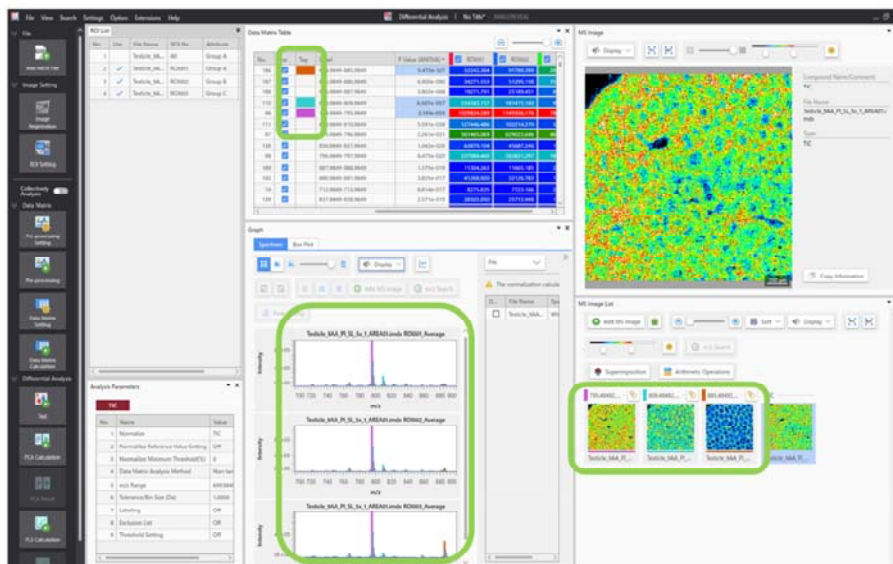
A few MS images appear in the MS image list (if the list is displayed as “sort” or “compounds”)

## Example of tagging: Main screen



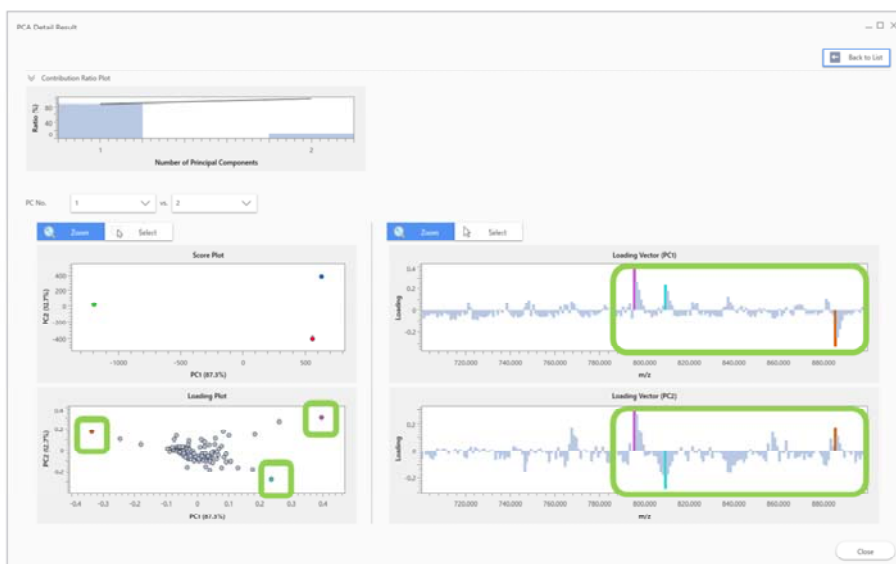
The colour palette appears and colours can be selected.

# Results of tagging



The colours selected in the MS image list will also be shown in the data matrix table and spectra.  
(The tagging will not be reflected in the spectra files)

## PCA results screen



The tagging settings in the MS image list will also be reflected on the PCA loading plots etc.