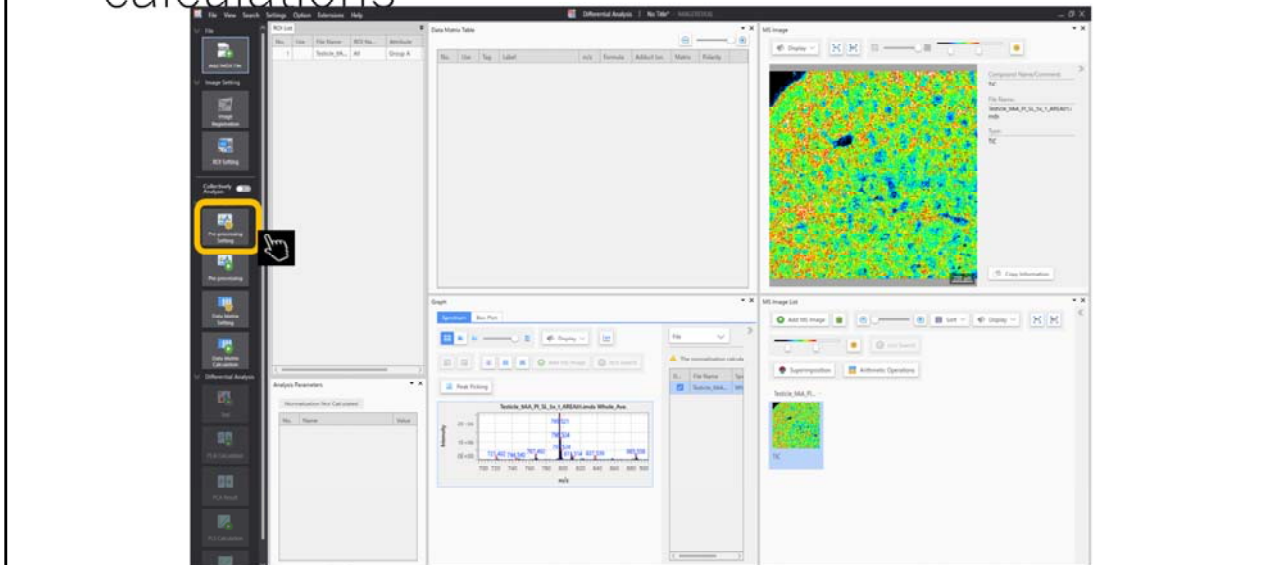


Method to check MS
images easily

Steps to check MS images

1. Create a data matrix
2. Display the spectrum
3. Display the “m/z selector cursor” on the spectrum
 - Right-click on m/z selector cursor and drag, and the thumbnail image of the MS image at that m/z will be displayed

1.1 Pre-processing settings for data matrix calculations



Carry out settings for pre-processing (normalization of signal intensity)

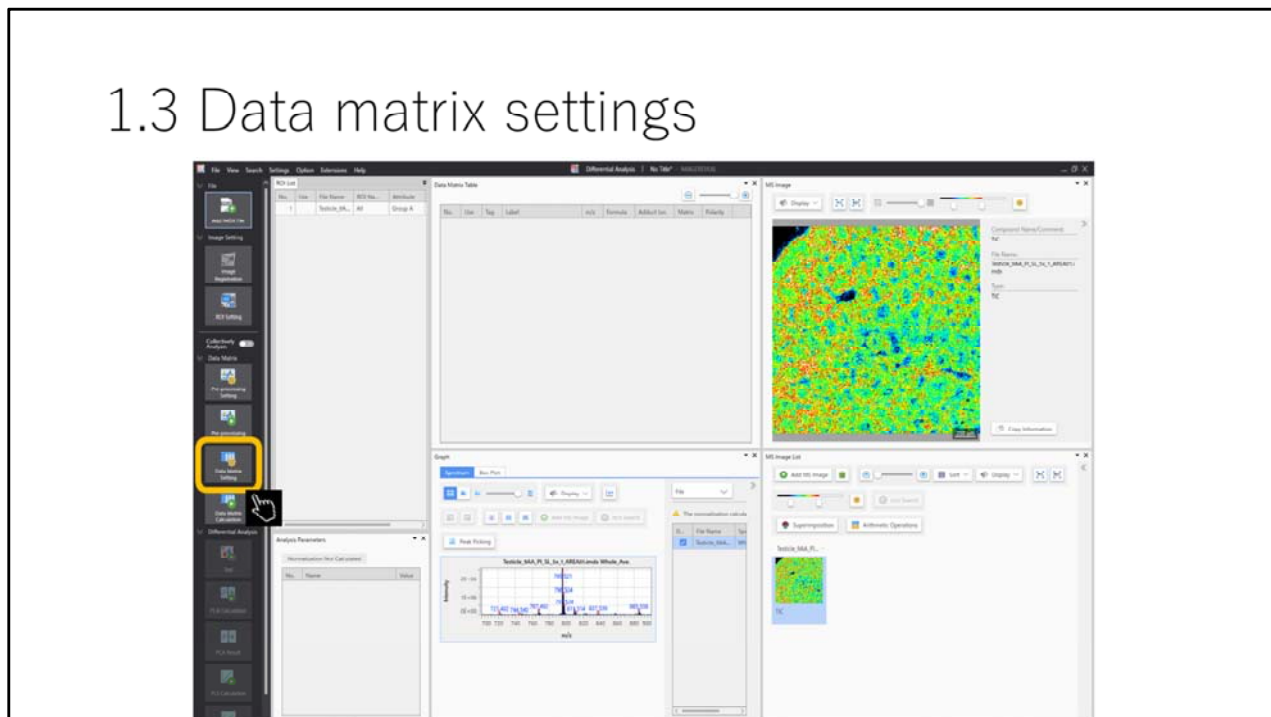
1.2 Pre-processing settings



Set the "Normalize" criteria.
TIC is generally used.

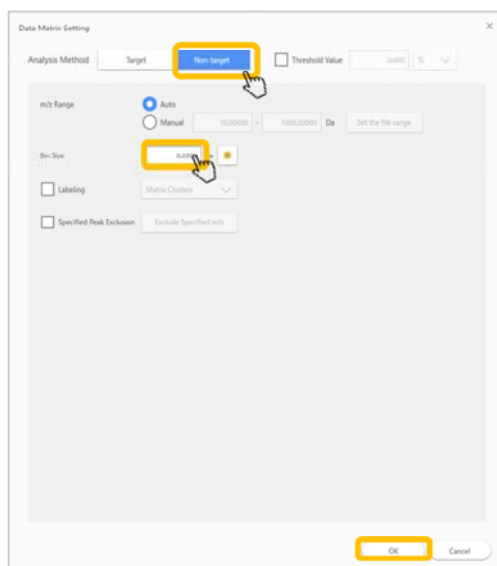
TIC is generally used.

1.3 Data matrix settings



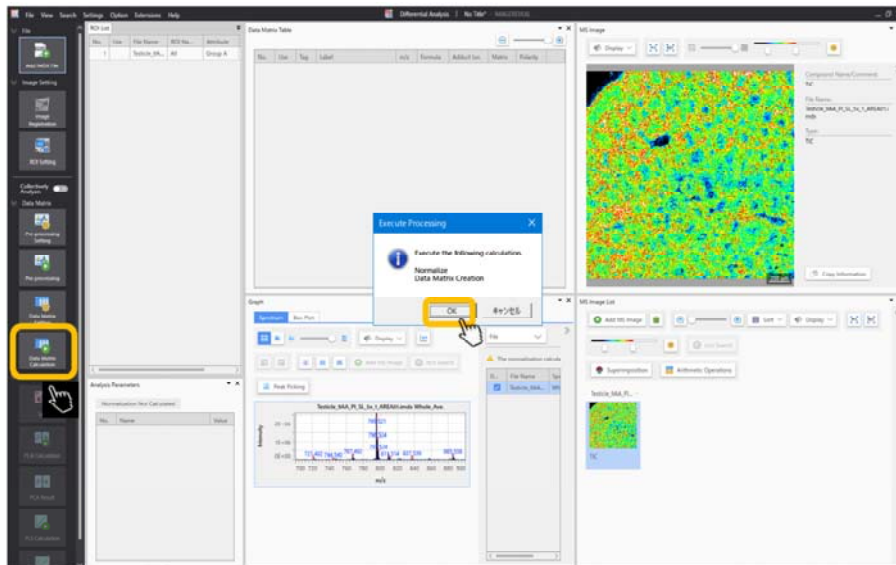
Apply settings to the target m/z

1.4 Data matrix settings



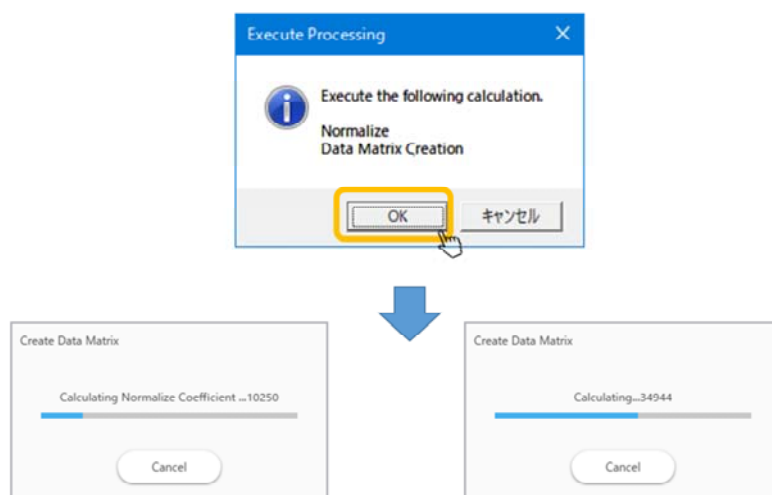
Non-target: cut out fixed widths of signal intensity from the spectrum.
Target: specify particular m/z values and the tolerance width.

1.5 Data matrix calculations



Carry out data matrix calculations.

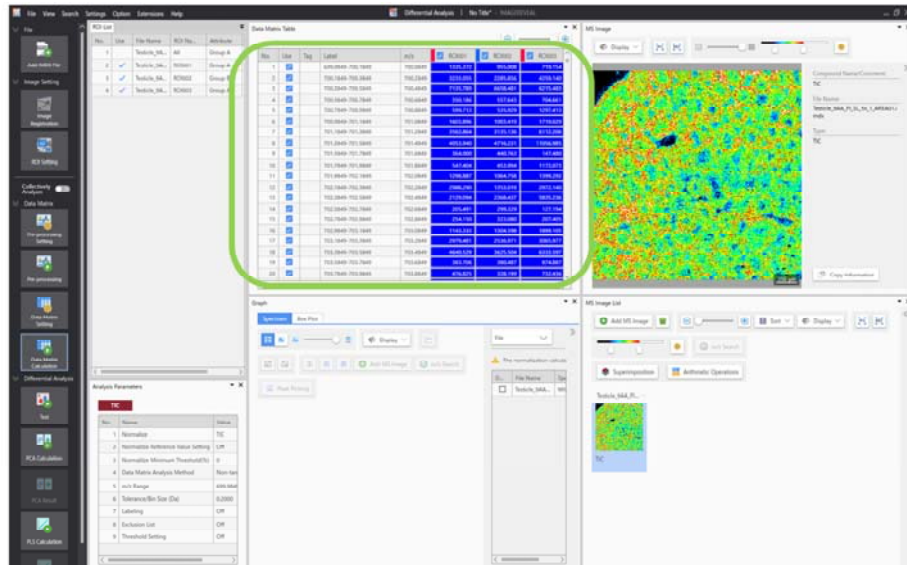
1.6 Running calculations



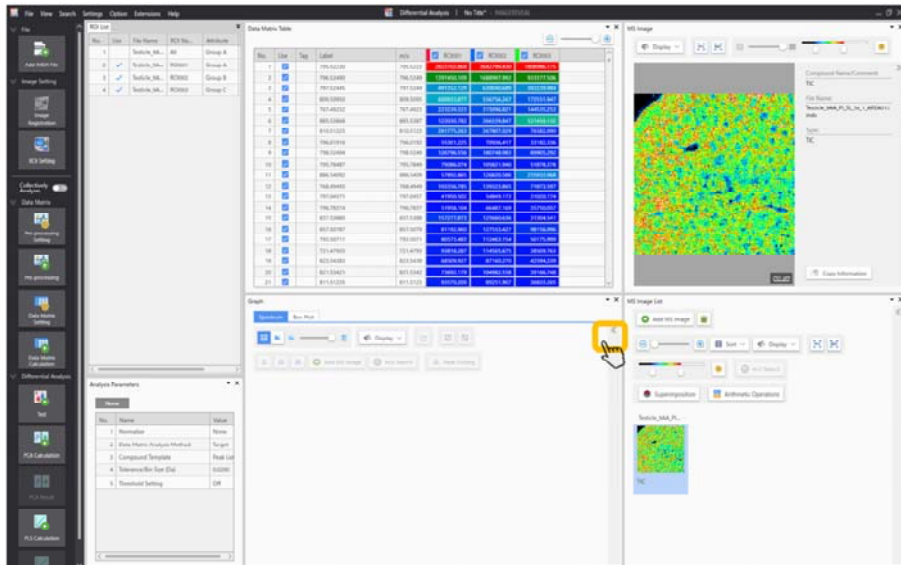
If pre-processing calculations have not yet been carried out, they will be run here at the same time.

If there are a large number of target compounds, the calculations will take longer.

1.7 Data matrix calculations are complete

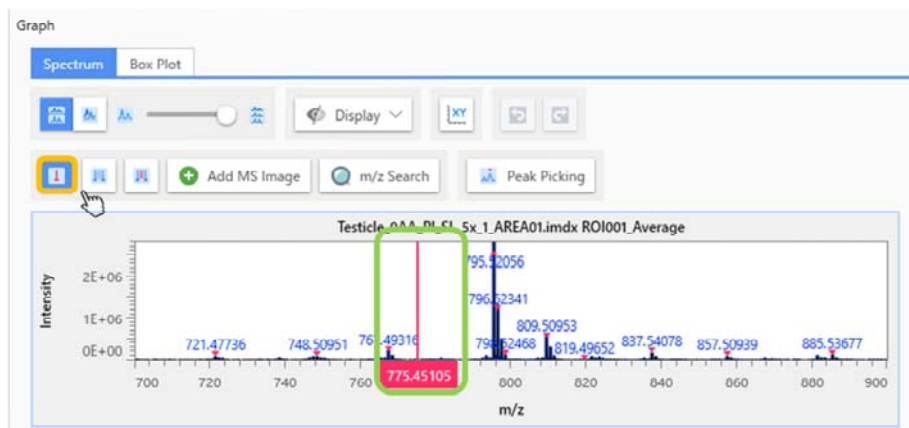


2.1 Displaying the graph list



Clicking on [<<] opens the graph list

3.1 Click on the “m/z selector cursor” button to display the m/z selector cursor



3.2 Drag the m/z selector cursor and the thumbnail image of the image at that m/z will appear

