

[Error message] “The reference image targeted for processing is not registered. Register the image and run it once again.”

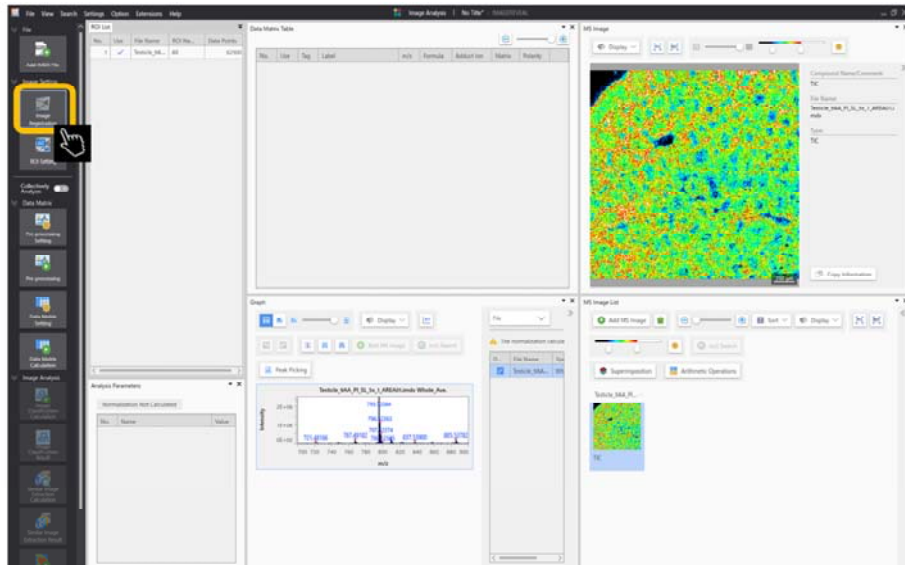
The error may appear during similar image extraction



- The reason for the error:
 - If image registration (alignment) has not been carried out on an image, it cannot be used for similar image extraction
- How to solve it:
 - Carry out image registration

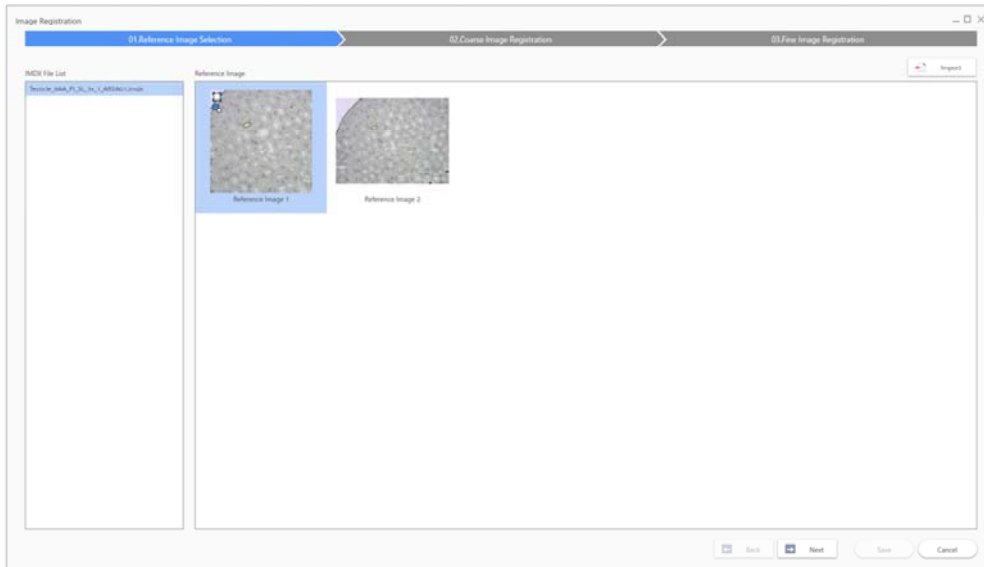
[Error message] “The reference image targeted for processing is not registered. Register the image and run it once again.”

Select “Image registration”



Select “Image registration”

Select an image as a reference image



If there are no reference images, import one

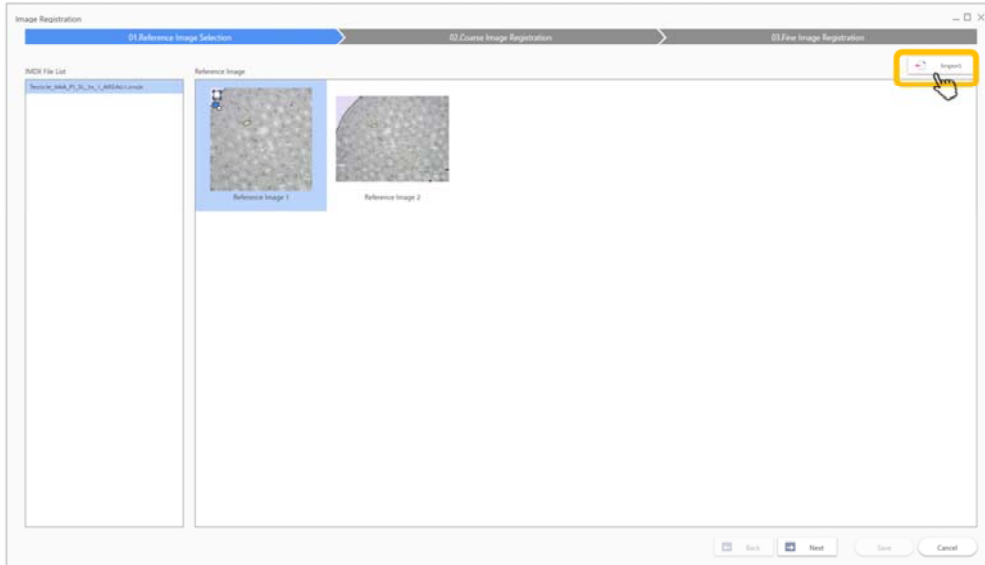
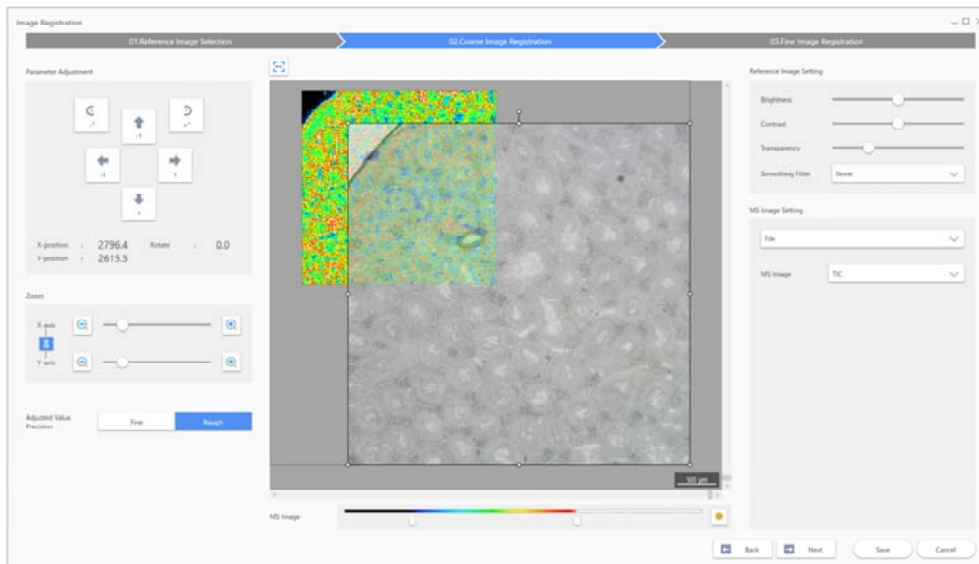
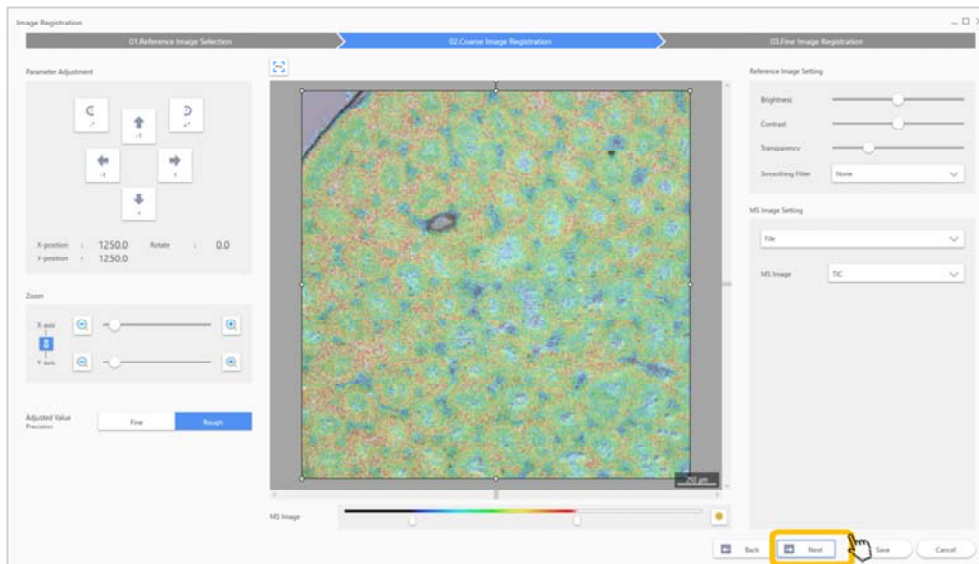


Image registration screen



In general the reference image that has been read in is not aligned with the MS image. Here we align the images.

Once registration is complete, save the file



For details refer to the “Image registration” instructions