

# Application News

## No. B74

### MALDI-TOF Mass Spectrometry

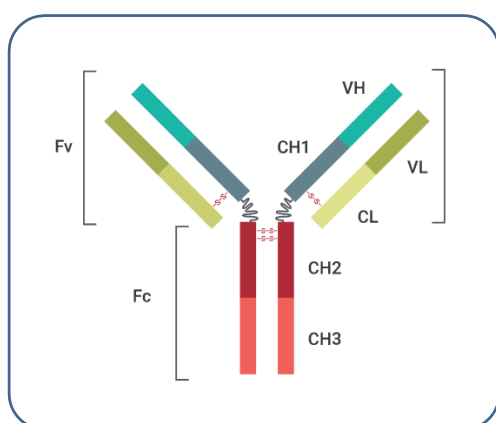
## Detection of High-mass Proteins Using a Benchtop MALDI-TOF Mass Spectrometer

The applicability of MALDI-TOF mass spectrometry to perform protein detection is well recognized in the life science field. In this field, SDS polyacrylamide gel electrophoresis and size exclusion chromatography have been historically used, however, they have drawbacks such as being time-consuming or lacking accuracy in molecular weight determination. Due to its ability to provide more accurate molecular weight information, MALDI-TOF mass spectrometry has become the primary tool for the analysis of protein primary structures. Moreover, in recent years, the analysis of proteins at the femtomole and subfemtomole levels is often required, which is increasing the demand for higher sensitivity measurements with MALDI-TOF mass spectrometry.

The mass range of MALDI-TOF mass spectrometry is potentially unlimited and gives full access to low- to high-mass molecules, such as antibodies. Monoclonal antibodies (see Fig. 1) are utilized for diagnostic and therapeutic purposes. In their development and quality control processes, it is very important to use fast and reliable analytical methods.

Here, we demonstrate the capability of a benchtop MALDI-TOF mass spectrometer (MALDI-8020, Fig. 2) to perform high-throughput protein detection with high sensitivity.

S. Salivo (Y. Yamazaki)



**Fig. 1 Generalized Structure of an Antibody**

### Sample Preparation and Measurement Conditions

The samples - bovine serum albumin (BSA) and immunoglobulin A (IgA) - were purchased from Sigma-Aldrich. These were prepared at a concentration of 500 fmol/ $\mu$ L and 20 pmol/ $\mu$ L, respectively. Fifty shots were accumulated per profile (200 profiles per spectrum). The mass spectra were recorded using the average masses.



Tuning	Linear
Polarity	Positive
Laser rep. rate	200 Hz
Accumulation rate (shots/profile)	50
Profiles	200

**Fig. 2 Benchtop MALDI-TOF MS: MALDI-8020**

### Results

To demonstrate the MALDI-8020 sensitivity, Fig. 3 shows the mass spectrum of BSA. The singly- (approx. 66 kDa), doubly- (approx. 33 kDa) and triply-charged (approx. 22 kDa) ions were observed with good signal-to-noise ratio which compared favourably with the linear mode performance of a conventional MALDI-TOF instrument.

Fig. 4 shows the mass spectrum of IgA. The singly-charged mass expected at approx. 160 kDa was observed along with the doubly-charged ion (approx. 80 kDa). The signal detected at approx. 54 kDa is consistent with the mass of the heavy chain (approx. 55 kDa expected).

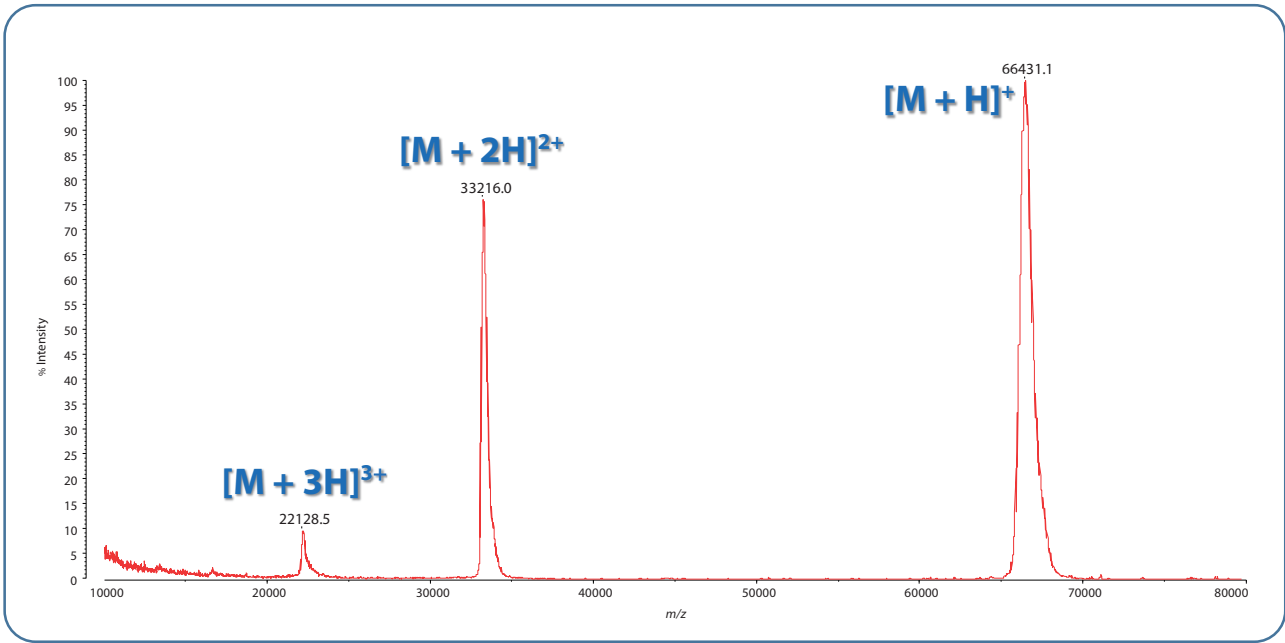


Fig. 3 Mass Spectrum of BSA (500 fmol/μL; 250 fmol on-target)

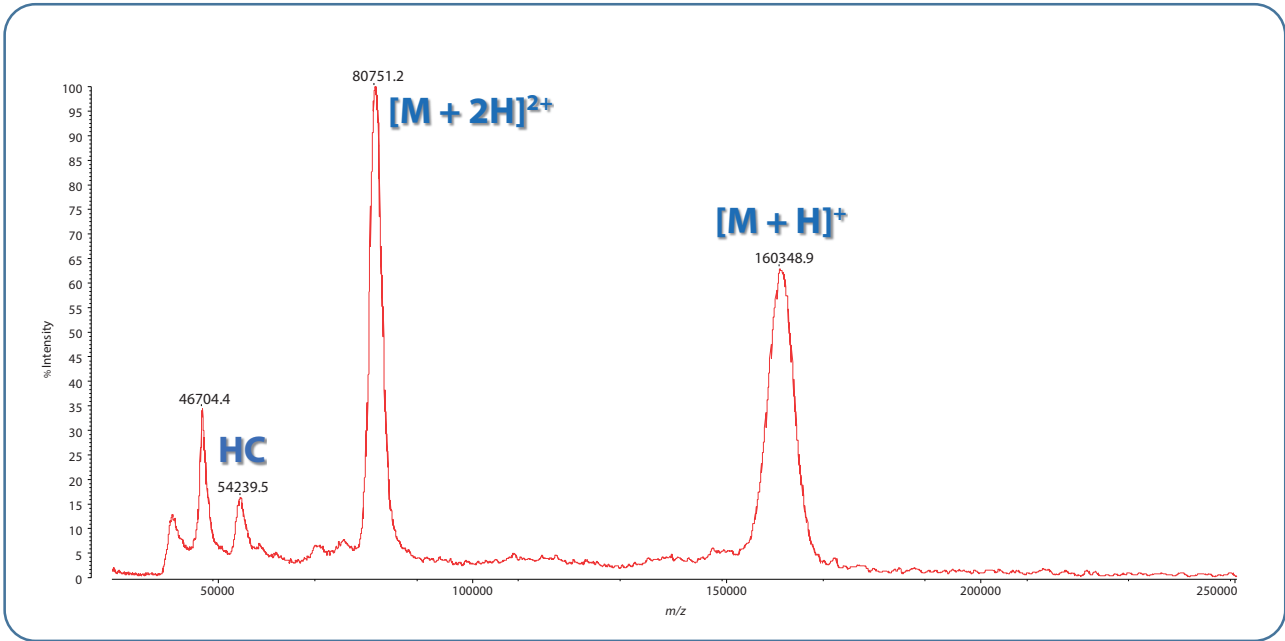


Fig. 4 Mass Spectrum of IgA (20 pmol/μL; 10 pmol on-target). HC = heavy chain

First Edition: Nov. 2017



For Research Use Only. Not for use in diagnostic procedures.

This publication may contain references to products that are not available in your country. Please contact us to check the availability of these products in your country.

The content of this publication shall not be reproduced, altered or sold for any commercial purpose without the written approval of Shimadzu. Shimadzu disclaims any proprietary interest in trademarks and trade names used in this publication other than its own. See <http://www.shimadzu.com/about/trademarks/index.html> for details.

The information contained herein is provided to you "as is" without warranty of any kind including without limitation warranties as to its accuracy or completeness. Shimadzu does not assume any responsibility or liability for any damage, whether direct or indirect, relating to the use of this publication. This publication is based upon the information available to Shimadzu on or before the date of publication, and subject to change without notice.

Shimadzu Corporation

[www.shimadzu.com/an/](http://www.shimadzu.com/an/)