

Application Data Sheet

No. 79

System Gas Chromatograph

High Speed Refinery Gas Analyzer Nexis GC-2030HSNGA2 GC-2014HSNGA2

This method is for determining the chemical composition of natural gases and similar gaseous mixtures within the composition range shown below. This test method provides data for calculating a sample's physical properties, such as its heating value and relative density, or for monitoring the concentrations of one or more of the components in a mixture. This analyzer uses a total of four valves and eight columns. The Sample is introduced into four sample loops for determination. Using a pre-column, C6+ components are back-flushed as a single peak. The valve timing then allows the hydrocarbons C3 through/to C5 to be separated individually through an Rtx-1 column and detected by FID. Finally, using an SS-PLOT-MS5A, Ar/O₂, N₂, CH₄, and CO are separated. At the same time, CO₂, C₂, and H₂S are separated using an SS-PLOT-Q-BOND column and detected by a TCD. The final analysis time is approximately six minutes. The system includes LabSolution workstation software and BTU and Specific Gravity calculation software.

Analyzer Information

System Configuration:

Four valves / eight capillary and packed columns with TCD / FID detectors

Sample Information:

Ar/O₂, N₂, CO, CO₂, H₂S, C₁-C₅, C₆+

Methods met:

ASTM D1945, D1946, D3588, GPA 2261

Concentration Range:

No.	Name of Compound	Concentration Range	
		Low Conc.	High Conc.
1	Ar+O ₂	0.01%	50.0%
2	N ₂	0.01%	50.0%
3	CH ₄	0.01%	80.0%
4	CO	0.01%	10.0%
5	CO ₂	0.01%	30.0%
6	C ₂ H ₄	0.01%	10.0%
7	C ₂ H ₆	0.01%	10.0%
8	C ₂ H ₂	0.01%	10.0%
9	H ₂ S	0.05%	30.0%
10	C ₃ H ₈	0.01%	5.0%
11	i-C ₄ H ₁₀	0.01%	1.0%
12	n-C ₄ H ₁₀	0.01%	1.0%
13	i-C ₅ H ₁₂	0.01%	1.0%
14	n-C ₅ H ₁₂	0.01%	1.0%
15	C ₆ plus	0.01%	0.5%

Detection limits may vary depending on the sample.
Please contact us for more consultation.

System Features

- Less than 6 minutes analysis for natural gases analysis with H₂S can be carried out
- Dual TCD with FID channels for simultaneous analysis
- By using split/splitless injector, liquid hydrocarbons can be analyzed by the FID

Typical Chromatograms

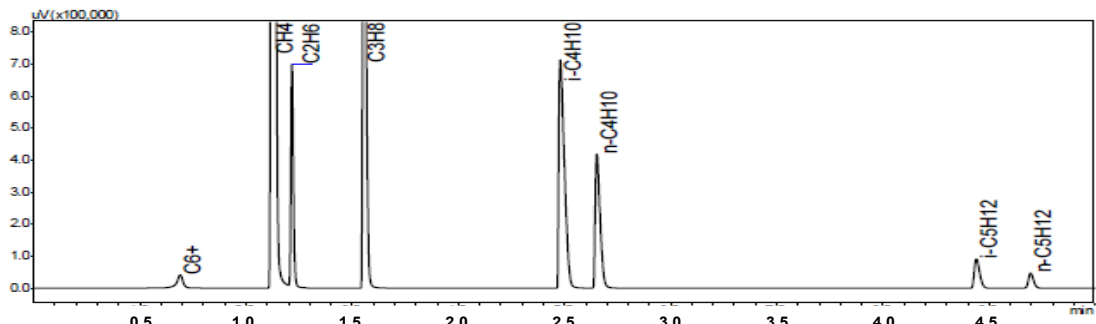


Fig. 1 Chromatogram of FID-1

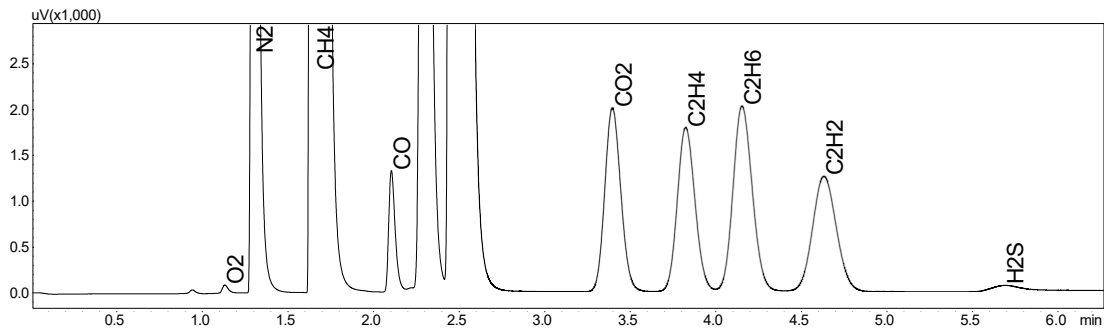


Fig. 2 Chromatogram of TCD-1

