

Application
Data Sheet

No. 111

System Gas Chromatograph

Isobutylene in 1-Butene Analysis System
Nexis GC-2030PlusIBY
GC-2014IBY

This GC is designed to measure isobutylene in 1-Butene. Two valves and two columns are used to create this GC system. The sample is separated by a DB-1 column and is detected by FID. LabSolutions chromatography software handles all aspects of GC control, automation, and data handling.

Analyzer Information

System Configuration:

Two valves / two packed column with one FID detector

Sample Information:

Isobutylene

Concentration Range:

| No. | Name of Compound | Concentration Range | | Detector |
|-----|------------------|---------------------|------------|----------|
| | | Low Conc. | High Conc. | |
| 1 | Isobutylene | 1ppm | 2000ppm | FID |

Detection limits may vary depending on the sample. Please contact us for more consultation.

System Features

- 24 minutes analysis for Isobutylene analysis can be carried out
- One FID channel
- Good repeatability

Typical Chromatograms

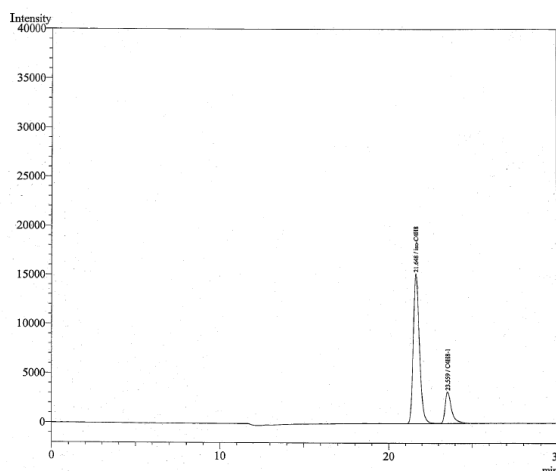


Fig. Chromatogram of FID

First Edition: November, 2017