

Application
Data Sheet

No. 75

System Gas Chromatograph

**Ethylene Oxide in MEG Unit Gas and Liquid
Stream Samples Analysis System**

**Nexis GC-2030EO
GC-2014EO**

This instrument is applied for the determination of ethylene oxide in MEG gas and liquid stream samples by gas chromatography (GC) and detection by TCD or FID. The sample is introduced into one sample loop or directly injected into a packed injection port. The separations are performed by a Porapak-Q and Porapak-N columns. LabSolutions chromatography software handles all aspects of GC control, automation, and data handling.

Analyzer Information

System Configuration:

One valve / three packed columns with one TCD detector or one valve / three packed columns with two FID detectors

Sample Information:

EO

Concentration Range:

No.	Name of Compound	Concentration Range		Detector
		Low Conc.	High Conc.	
1	EO	0.1%	30.0%	TCD-1
2	EO	1.0ppm	100.0ppm	FID-1

Detection limits may vary depending on the sample. Please contact us for more consultation.

System Features

- Versatile software easy GC system operation
- One TCD channel or one FID channel
- Good repeatability

Typical Chromatograms

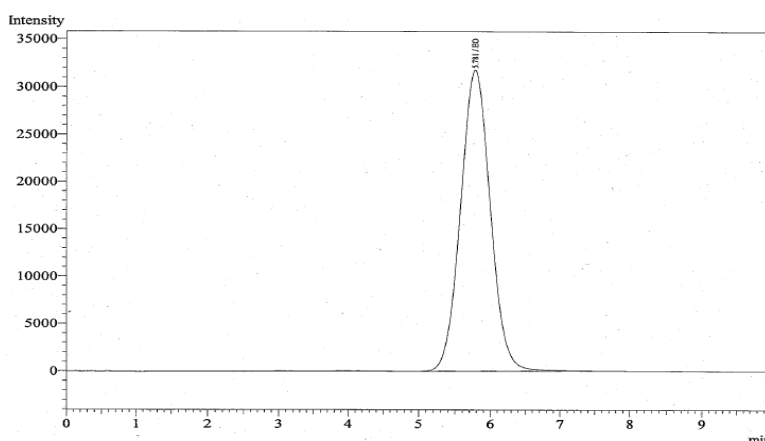


Fig. Chromatogram of TCD

First Edition: November, 2017