

## Application News

No. **C228**

LC-MS

### High Sensitivity Analysis of Aldosterone in Human Serum Using LCMS™-8060NX



This report introduces an example of high sensitivity analysis of aldosterone in serum using LCMS-8060NX, a triple quadrupole mass spectrometer. Calibration curves prepared using standard samples showed linearity in the concentration range of 0.5 - 10000 pg/mL ( $R^2 = 0.9998$ ), with %RSD of concentration of 3.96% at the lower limit of quantification and accuracy at each calibration point ranged from 95.58 - 109.84%. Furthermore, the accuracy of serum samples spiked with aldosterone (1 pg/mL) was 106%, indicating that the method used in the analysis is suitable for the actual samples.

N. Kato, Y. Inohana

#### ■ Introduction

Aldosterone (Fig. 1), a mineralocorticoid produced in the cortex of the adrenal gland, plays key roles in the homeostasis of electrolytes, circulating blood volume and blood pressure regulation. The aldosterone levels in blood are used for diagnosis of hypertensive diseases, such as primary hyperaldosteronism, diabetic nephropathy or nephritis interstitial, etc.

For the measurement of aldosterone levels, radioimmunoassay (RIA) or enzyme immunoassay (EIA) has been used, but the aldosterone concentration levels measured using the immune responses may be greater due to the cross reaction with steroid hormones having similar structures in the samples. The use of LC/MS/MS with high selectivity prevents the problems caused by the conventional method and enables more accurate quantitative analysis.

This report introduces an example of high sensitivity quantitative analysis of aldosterone in serum using LCMS-8060NX.

#### ■ Sample Preparation

Standard samples were serially diluted with 50% methanol, prepared at concentrations of 0.5 - 10000 pg/mL and used for preparation of the calibration curve.

For the samples spiked with serum, commercially available steroid-free human serum was spiked with aldosterone to make a serum concentration of 1 pg/mL. The standard sample and internal standard were spiked with 100  $\mu$ L of serum, and then shaken well with a mixture of hexane and ethyl acetate (9 : 1). The solution obtained was centrifuged for 10 minutes, followed by evaporating the organic solvent layer to dryness, and then re-dissolved with 50% methanol.

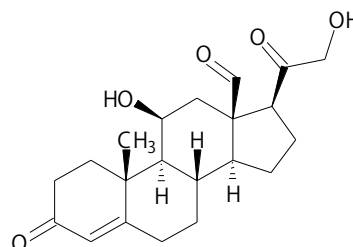


Fig. 1 Structural Formula of Aldosterone

**Analytical Conditions**

The analytical conditions for HPLC and MS are shown in Table 1. The MRM transitions are shown in Table 2.

**Table 1 Analytical Conditions**

[HPLC conditions] (Nexera™ X3)	
Column	Shim-pack Scepter™ C18-120, 50 mm × 2.1 mm I.D., 1.9 μm <sup>1</sup>
Mobile phases	A) 0.05 mM NH <sub>4</sub> F in water B) methanol
Mode	Gradient elution
Flow rate	0.3 mL/min
Injection volume	25 μL
[MS conditions] (LCMS-8060NX)	
Ionization	ESI (Positive mode)
Mode	MRM
Interface voltage	1 kV
IonFocus voltage	3.5 kV
Nebulizing gas flow	3.0 L/min
Drying gas flow	10.0 L/min
Heating gas flow	5.0 L/min
DL temp.	250 °C
Block heater temp.	300 °C
Interface temp.	400 °C
Probe position	+1.5

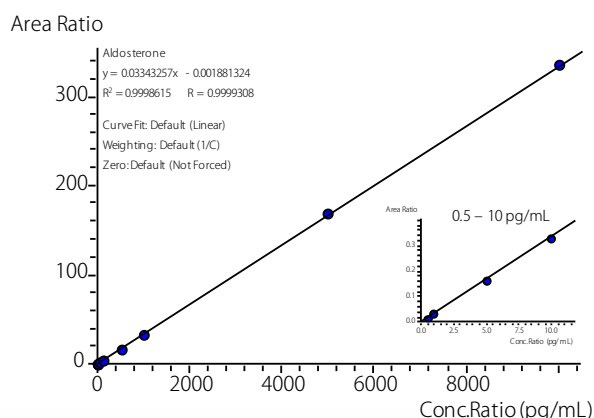
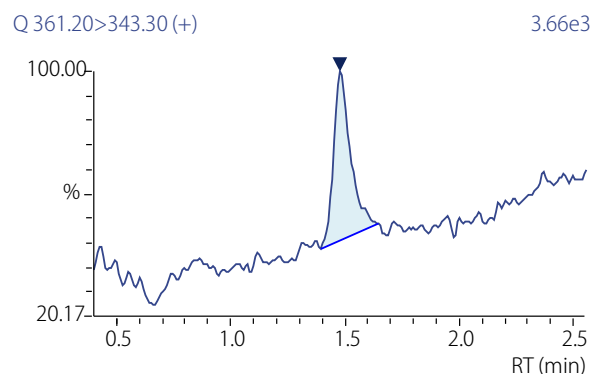
\*1: P/N 227-31012-03

**Table 2 MRM Transitions**

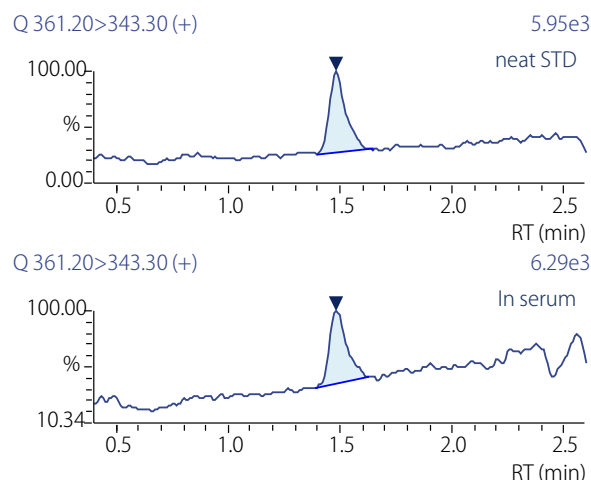
Compound	Precursor m/z	Product m/z
Aldosterone	361.20	343.30
Aldosterone-[D4]	365.25	346.25

**Calibration Curve**

The calibration curve prepared using the standard sample (internal standard method, n=3 for each concentration) showed good linearity in a wide dynamic range from 0.5 - 10000 pg/mL with a coefficient of determination (R<sup>2</sup>) of 0.9998. The %RSD of concentration at the lower limit of quantification was 3.96% with the accuracy at each calibration point ranging from 95.58 - 109.84%. Fig. 2 shows the calibration curve, and Fig. 3 shows the MRM chromatogram of the 0.5 pg/mL standard solution.

**Fig. 2 Calibration Curve (0.5 - 10000 pg/mL)****Fig. 3 MRM Chromatogram (neat STD: 0.5 pg/mL)****Sample Spiked with Human Serum**

Based on the area obtained by the measurement of the pretreated sample, the aldosterone level was calculated using the calibration curve shown in Fig. 2. Good accuracy was obtained and the mean level of aldosterone spiked at 1 pg/mL with serum was 1.06 pg/mL (n=3). Fig. 4 shows the MRM chromatogram of the sample spiked with human serum.

**Fig. 4 MRM Chromatogram at 1 pg/mL (Upper: neat STD, Lower: Sample Spiked with Human Serum)****Conclusion**

Quantitative analysis of aldosterone using LCMS-8060NX demonstrated that the aldosterone level can be determined across a wide range of 0.5 - 10000 pg/mL, and that good accuracy is achieved with samples spiked with human serum.

LCMS, Nexera, and Shim-pack Scepter are trademarks of Shimadzu Corporation in Japan and/or other countries.

The product described in this document has not been approved or certified as a medical device under the Pharmaceutical and Medical Device Act of Japan. It cannot be used for the purpose of medical examination, treatment or related procedures.

First Edition: Oct. 2020



Shimadzu Corporation

www.shimadzu.com/an/

**For Research Use Only. Not for use in diagnostic procedure.**

This publication may contain references to products that are not available in your country. Please contact us to check the availability of these products in your country.

The content of this publication shall not be reproduced, altered or sold for any commercial purpose without the written approval of Shimadzu. Shimadzu disclaims any proprietary interest in trademarks and trade names used in this publication other than its own. See <http://www.shimadzu.com/about/trademarks/index.html> for details.

The information contained herein is provided to you "as is" without warranty of any kind including without limitation warranties as to its accuracy or completeness. Shimadzu does not assume any responsibility or liability for any damage, whether direct or indirect, relating to the use of this publication. This publication is based upon the information available to Shimadzu on or before the date of publication, and subject to change without notice.

© Shimadzu Corporation, 2020

# Related Products

Some products may be updated to newer models.



> **LCMS-8060NX**  
Liquid Chromatograph Mass Spectrometer



> **Shim-pack Scepter LC Columns**  
HPLC Column



> **LCMS-TQ RX Series**  
Triple Quadrupole LC-MS/MS

# Related Solutions

> Life Science

> Small Molecule  
Pharmaceutical

> Price Inquiry

> Product Inquiry

> Technical Service /  
Support Inquiry

> Other Inquiry