

Application News

Gas Chromatograph Mass Spectrometer GCMS-TQ™8050 NX

A Sample Prep-Free Analysis of Perfluorinated Carboxylic Acids with “Smart IS+” and “SMCI+” - Environmental Monitoring -

Chua Chun Kiang¹, Jackie¹, Riki Kitano²

¹Shimadzu (Asia Pacific) Pte Ltd., ²Shimadzu Corporation Japan

User Benefits

- ◆ “Smart IS+” and “SMCI+” setups enable direct qualitative GC/MS analysis of PFCAs without the need for multi-step derivatization procedures
- ◆ Gain access to both electron ionization and positive chemical ionization modes with a single “Smart IS+” setup
- ◆ “SMCI+” setup delivers convenience and safety to perform positive chemical ionization since it requires only common laboratory solvents as reagent gas

Introduction

Perfluorinated carboxylic acids (PFCAs) are man-made compounds that do not occur naturally in the environment. These compounds are extremely persistent in the environment and commonly named “the forever chemical”. PFCAs bioaccumulate in humans and wildlife leading to potential adverse effects on the environment, human, and wildlife health. Perfluorooctanoic acid (PFOA) is one of the most widely used PFCAs in manufacturing processes and its exposure has long caught the attention of regulators such as the US Environmental Protection Agency and the European Environmental Agency. Longer carbon chains of PFCAs are also a major concern as they were detected in human breast milk and infant formulas. While there have been enormous efforts to restrict the use of PFCAs, the lack of alternatives and international free trades hence call for the need for constant environmental and substance monitoring.

PFCAs are compounds of the formula $C_nF_{(2n+1)}CO_2H$. Due to the presence of a carboxyl functional group, it is necessary to perform derivatization prior to analysis with the gas chromatography/mass spectrometry (GC/MS) technique. The usage of a direct probe as a sample inlet in GC/MS provides an alternative technique that eliminates the need for tedious sample preparation. This benefit paves the way for a quick and direct method to achieve preliminary detection and identification of PFCAs.

This article demonstrates the application of a direct probe in conjunction with a Smart EI/CI ion source (Smart IS) or solvent mediated chemical ionization (SMCI) unit for the analysis of six types of PFCAs. The mass spectra of PFCAs generated by Smart IS and SMCI units will be evaluated

Measurement Conditions and Samples

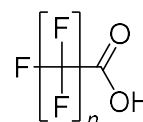
Analytical Setup.

The analytical results in this report were generated using a Direct Sample Inlet (DI) probe in conjunction with a Smart IS or SMCI unit. The combination of DI with Smart IS or SMCI unit is hence known as “Smart IS+” and “SMCI+” in this article, respectively (Fig. 1).

The DI probe is designed to be able to fit a miniature sample vial at its tip. The sample vial is thereafter placed close to the ion source and subsequently heated up according to a temperature program. The chemicals in the sample vial are hence volatilized and ionized in the ion source.



Fig. 1 Polymode Ionization setup inclusive of “Smart IS+” and “SMCI+”.



Perfluorinated Carboxylic Acid (PFCAs)

Name	Abbreviation	Formula	MW
Perfluoroheptanoic acid	PFHpA	$C_7F_{13}O_2H$	364
Perfluorooctanoic acid	PFOA	$C_8F_{15}O_2H$	414
Perfluorononanoic acid	PFNA	$C_9F_{17}O_2H$	464
Perfluorodecanoic acid	PFDA	$C_{10}F_{19}O_2H$	514
Perfluorotridecanoic acid	PFTriA	$C_{13}F_{25}O_2H$	664
Perfluorotetradecanoic acid	PFTA	$C_{14}F_{27}O_2H$	714

Smart IS is a 2-in-1 ion source that enables both electron ionization (EI) and positive chemical ionization (PCI) modes. PCI is achieved with the usage of isobutane gas as a reagent gas. Due to the simplicity of switching between the two different ionization modes with Smart IS, the PCI mode attained with Smart IS is referred to as quick chemical ionization (QCI).

On the other hand, the SMCI unit enables PCI mode with conventional PCI ion source and methanol as the reagent gas. Usage of methanol allows safe (i.e., it eliminates the use of flammable and toxic reagent gases such as methane, isobutane, and ammonia) and convenient adoption of PCI mode in routine GC/MS analysis.

A total of 6 PFCAs including perfluoroheptanoic acid (PFHpA), perfluorooctanoic acid (PFOA), perfluorononanoic acid (PFNA), perfluorodecanoic acid (PFDA), perfluorotridecanoic acid (PFTriA) and perfluorotetradecanoic acid (PFTA) were analyzed in this study.

Experimental Condition.

Standard solutions of PFCAs were prepared to a concentration of 5000 ppm in methanol. 1 μ L of the standard solution was introduced into the DI sample vial for analysis. A mixture sample was prepared by introducing 1 μ L of each standard solution into a DI sample vial. The samples were left to dry before analysis.

The DI probe was heated at 20 $^{\circ}$ C/min to 100 $^{\circ}$ C, then 40 $^{\circ}$ C/min to 450 $^{\circ}$ C and held for 7 min. The ion source temperature was set to 230 $^{\circ}$ C. Ionization mode used included EI, QCI (isobutane), and SMCI (methanol). Scan mode was performed in the range of m/z 50-800 with a scan speed of 3333.

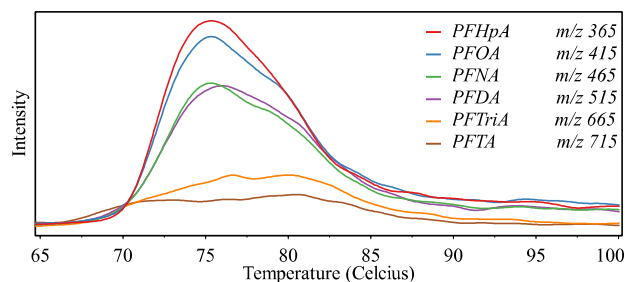
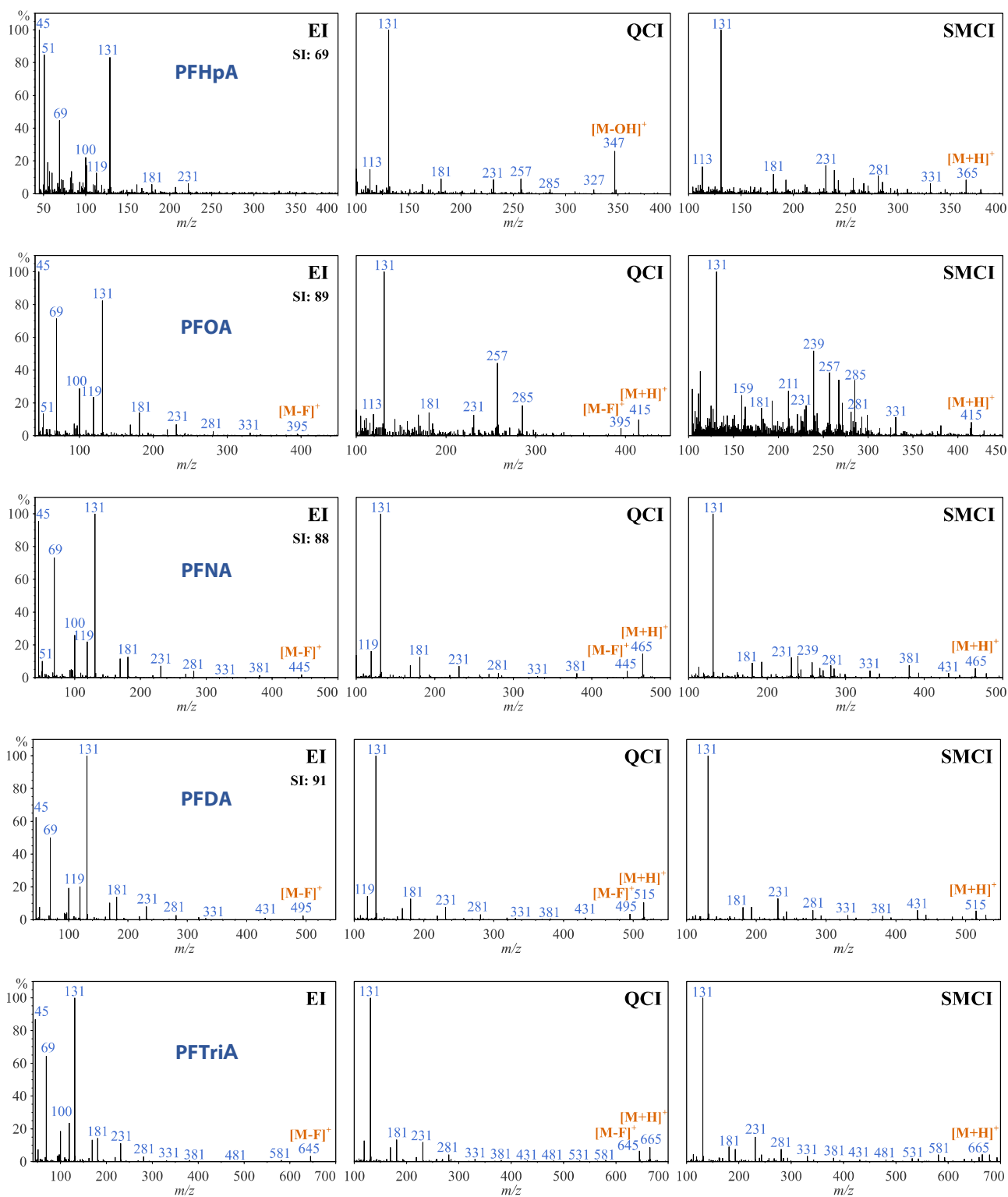


Fig. 2. EIT profile of $[M+H]^+$ ion from SMCI mode for a mixture of PFCAs.



(continued on next page)

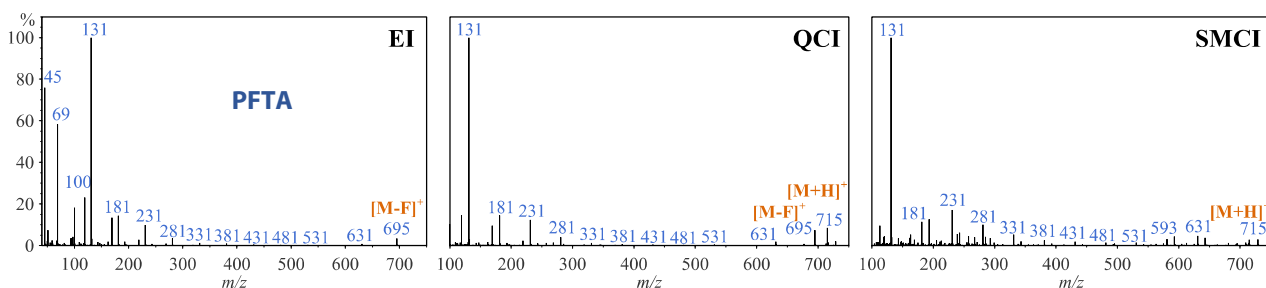


Fig. 3. EI, QCI, and SMCI mass spectra of PFCAs collected with “Smart IS+” and “SMCI+”. SI: Library similarity index.

■ Results and Discussion

“Smart IS+” and “SMCI+” Mass Spectra.

Using “Smart IS+” and “SMCI+”, the PFCAs were first analyzed with three different ionization modes, specifically EI, QCI, and SMCI, to establish the total ion thermogram profiles and mass spectra. The extracted ion thermogram (EIT) profiles of $[M+H]^+$ ion for the PFCAs collected with SMCI mode are shown in Fig. 2. All the PFCAs eluted within 100 °C. The consolidated mass spectra of the PFCAs collected with the three ionization modes are shown in Fig. 3.

The EI mass spectra of PFHpA, PFOA, PFNA, and PFDA were successfully matched to the NIST mass spectral library. PFOA, PFNA, and PFDA achieved a relatively high similarity index score of >80, in comparison to a low similarity index score for PFHpA. However, no mass spectral data were available for PFTrIA and PFTA. Despite the lack of molecular ion peaks in the EI mass spectra, obvious $[M-F]^+$ ion was observed for all except for PFHpA.

The QCI mass spectra of the PFCAs showed a slight resemblance to their respective EI mass spectra. With the usage of PCI mode, the corresponding $[M+H]^+$ ions were observed in the QCI mass spectra for PFOA, PFNA, PFDA, PFTrIA, and PFTA. Obvious $[M-F]^+$ ion peaks were also observed alongside the protonated species. For PFHpA, a prominent peak at m/z 347 corresponding to $[M-OH]^+$ ion was observed.

On the other hand, corresponding $[M+H]^+$ ion peaks were observed in the SMCI mass spectra for all PFCAs. The observed

preference for the formation of protonated molecules for PFHpA with SMCI in comparison to QCI could be due to the difference in reagent gas used. Nevertheless, QCI provided more distinctive confirmatory ion peaks than SMCI.

In general, the analysis of PFCAs under PCI mode resulted in the formation of the base peak at m/z 131, which is postulated as $[C_3F_5]^+$ ion. In conjunction with this, a series of peaks differing by 50u (i.e., m/z 181, 231, 281, 331, 381, 431, 481, 531, 581, 631,...) could be almost certainly assigned to the loss of a CF_2 radical during the ionization process. All in all, these peaks could serve as useful fingerprints for the preliminary detection and identification of PFCAs.

■ Conclusion

The “Smart IS+” and newly introduced “SMCI+” enable a direct and quick qualitative analysis of PFCAs, which conventionally requires tedious derivatization steps prior to GC/MS analysis. The “Smart IS+” setup delivers convenience in switching between electron ionization and positive chemical ionization mode of analysis.

On the other hand, the “SMCI+” setup delivers utmost convenience and safety to carry out positive chemical ionization since it utilizes methanol, which is a common laboratory solvent, as the reagent gas. The “SMCI+” setup is also capable of performing negative chemical ionization, which would further improve the detection sensitivity of fluorinated compounds such as PFCAs.

GCMS-TQ is a trademark of Shimadzu Corporation in Japan and/or other countries.



Shimadzu Corporation
www.shimadzu.com/an/

SHIMADZU (Asia Pacific) Pte. Ltd,
www.shimadzu.com.sg

For Research Use Only. Not for use in diagnostic procedures.

This publication may contain references to products that are not available in your country. Please contact us to check the availability of these products in your country.

The content of this publication shall not be reproduced, altered or sold for any commercial purpose without the written approval of Shimadzu. See <http://www.shimadzu.com/about/trademarks/index.html> for details.

Third party trademarks and trade names may be used in this publication to refer to either the entities or their products/services, whether or not they are used with trademark symbol “TM” or “®”.

The information contained herein is provided to you “as is” without warranty of any kind including without limitation warranties as to its accuracy or completeness. Shimadzu does not assume any responsibility or liability for any damage, whether direct or indirect, relating to the use of this publication. This publication is based upon the information available to Shimadzu on or before the date of publication, and subject to change without notice.

04-JMST-204-EN

First Edition: Mar. 2021

Related Products

Some products may be updated to newer models.



> GCMS-TQ™8050 NX

Triple Quadrupole Gas Chromatograph
Mass Spectrometry



> GC/MS CI , CI/NCI and SMC Measurement



> DI-2010

Direct Sample Inlet Unit for GCMS-TQ
Series, GCMS-...

Related Solutions

> Small Molecule Pharmaceutical

> Environment

> Price Inquiry

> Product Inquiry

> Technical Service / Support Inquiry

> Other Inquiry