

## Analysis of Carboxymethyl Cellulose Using an Integrated HPLC System

N. Iwata

### User Benefits

- ◆ Measuring the molecular weight distribution of carboxymethyl cellulose with an eluent of sodium nitrate or sodium sulfate is possible.
- ◆ Stable analysis can be achieved with a less corrosive eluent.
- ◆ The integrated HPLC system is not dedicated to gel-filtration chromatography (GFC), but also utilized for other purposes.

### Introduction

Carboxymethyl cellulose (CMC) is used in disintegrating agents for pharmaceuticals, food additives, cosmetics, and other products. CMC is an anionic water-soluble polymer with thickening, water-absorbing, and water-retaining features. Gel-filtration chromatography (GFC) is used to measure molecular weight distribution when evaluating the physical properties and performing product quality control of water-soluble polymers. In general, when analyzing anionic samples by GFC, early elution may occur due to chain enlargement caused by intramolecular ion repulsion, and ion repulsion with packing materials. Depending on the eluent conditions used for GFC, ion repulsion-based electrostatic interactions can make the CMC elution start earlier and disturb an accurate determination of the molecular weight distribution.

This article describes analyses of CMC using an integrated HPLC system, as well as a comparison of different eluents.

### Comparison of Eluents

Adding salt to the eluent increases the effect of suppressing ion repulsion. However, using halide salts such as sodium chloride in the eluent at high concentrations can corrode stainless steel piping and other flow path components. In such cases, flow paths must be washed after analysis or a metal-free system must be used.

This article compared two less corrosive salts, sodium nitrate and sodium sulfate, when used in the eluent. Analysis was performed on two columns designed to handle different ranges of molecular weights that were connected in series. The sample was commercially available sodium carboxymethyl cellulose (average molecular weight: approx. 90,000). The analytical conditions are shown in Table 1. Fig. 1 shows the comparison of chromatograms for CMC standard solutions (0.1 %, prepared with each eluent). A higher peak was obtained using sodium nitrate in the eluent.

Table 1 Analytical Conditions

System	: LC-2050C
Column	: Shodex OHpak SB-803 HQ + SB-805 HQ (300 mm × 8.0 mm I.D. each)
Flow rate	: 1.0 mL/min
Mobile phase (1)	: 100 mmol/L sodium nitrate
Mobile phase (2)	: 100 mmol/L sodium sulfate
Column temp.	: 40 °C
Sample	: 0.1 % CMC solution
Injection volume	: 50 µL
Vial	: SHIMADZU LabTotal™ for LC 1.5 mL, Glass*1
Detection	: Refractive index (RID-20A) Cell temp. 40 °C

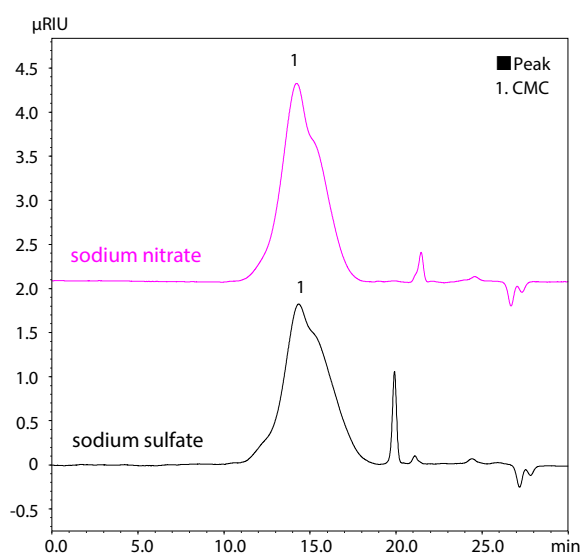


Fig. 1 Comparison of Eluents

### Calibration Curve

Pullulan reference markers and maltooligosaccharides were used to prepare a calibration curve for molecular weights in the range 342 to 1,600,000.

Fig. 2 shows the calibration curve.

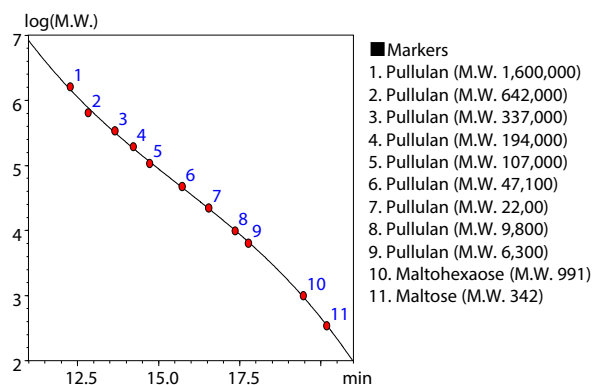


Fig. 2 Calibration Curve

## ■ Analysis of Carboxymethyl Cellulose

Table 2 shows the analytical conditions used to obtain the chromatogram of CMC standard solution (0.1 %, prepared with the eluent) shown in Fig. 3.

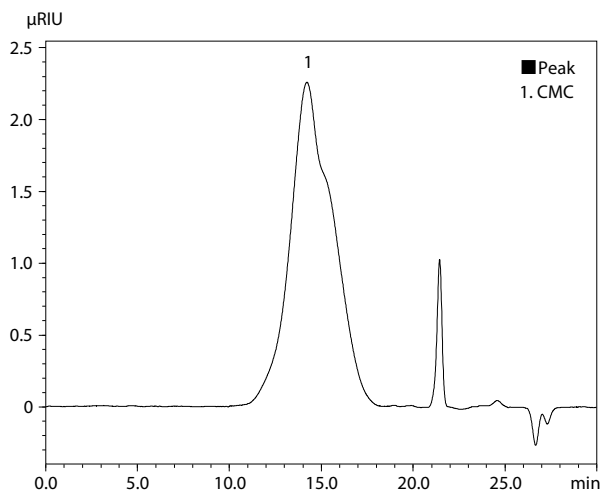


Fig. 3 Chromatogram of CMC Standard Solution (0.1 %)

Table 2 Analytical Conditions

System	: LC-2050C
Column	: Shodex OHpak SB-803 HQ + SB-805 HQ (300 mm × 8.0 mm I.D. each)
Flow rate	: 1.0 mL/min
Mobile phase	: 100 mmol/L sodium nitrate
Column temp.	: 40 °C
Sample	: 0.1 % CMC solution
Injection volume	: 50 μL
Vial	: SHIMADZU LabTotal for LC 1.5 mL, Glass
Detection	: Refractive index (RID-20A) Cell temp. 40 °C

## ■ Molecular Weight Distribution and Reproducibility

CMC analysis was performed six times. Table 3 shows the average for the number average molecular weight (Mn), weight average molecular weight (Mw), molecular weight distribution (polydispersity: Mw/Mn), and reproducibility (n = 6). The sample used in this article had a large distribution of molecular weights and was extrapolated on the high molecular weight side. However, good reproducibility of 0.7 % or less was still achieved for Mn, Mw, and Mw/Mn. It should be noted that these results use pullulan-converted molecular weights.

We also offer LabSolutions™ GPC workstation software as an option, which lets the user verify the statistical results of repeated analyses at a glance (Fig. 4).

Table 3 GPC Calculation Results (n = 6)

	Mn	Mw	Mw/Mn
CMC	78,000	263,000	3.37
%RSD	0.51	0.62	0.64

## ■ Conclusion

The molecular weight distribution of CMC can be measured by the integrated HPLC system coupled with a refractive index detector. Stable analysis can be achieved by using sodium nitrate and other salts that are less corrosive to stainless steel. A single integrated HPLC system can be used for this and other types of analysis, because piping and other flow path components do not need to be replaced.

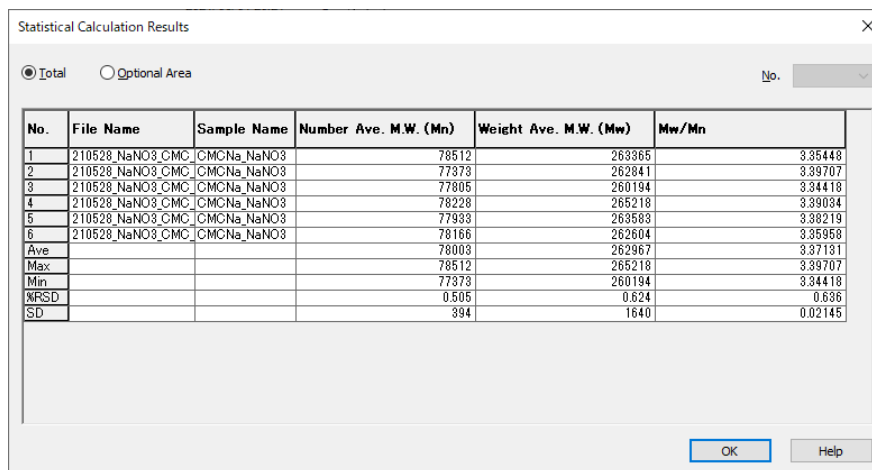


Fig. 4 Window Showing the Statistical Results

SHIMADZU LabTotal and LabSolutions are trademarks of Shimadzu Corporation in Japan and/or other countries.



Shimadzu Corporation  
Analytical & Measuring Instruments Division  
Global Application Development Center

www.shimadzu.com/an/

For Research Use Only. Not for use in diagnostic procedures.

This publication may contain references to products that are not available in your country. Please contact us to check the availability of these products in your country. The content of this publication shall not be reproduced, altered or sold for any commercial purpose without the written approval of Shimadzu. See <http://www.shimadzu.com/about/trademarks/index.html> for details.

Third party trademarks and trade names may be used in this publication to refer to either the entities or their products/services, whether or not they are used with trademark symbol "TM" or "®".

The information contained herein is provided to you "as is" without warranty of any kind including without limitation warranties as to its accuracy or completeness. Shimadzu does not assume any responsibility or liability for any damage, whether direct or indirect, relating to the use of this publication. This publication is based upon the information available to Shimadzu on or before the date of publication, and subject to change without notice.