

CoreFocus
Report
No.120

LC

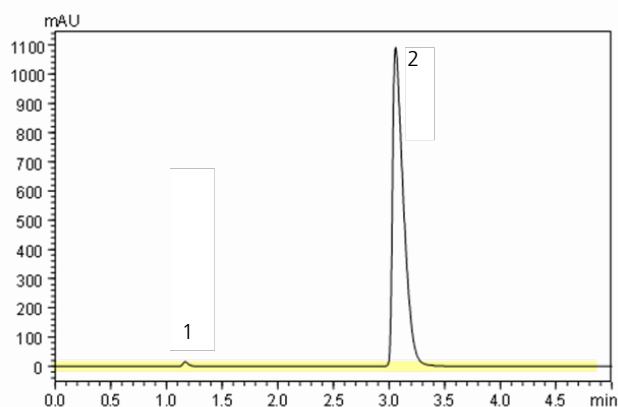
Reversed-phase

Shim-pack Series

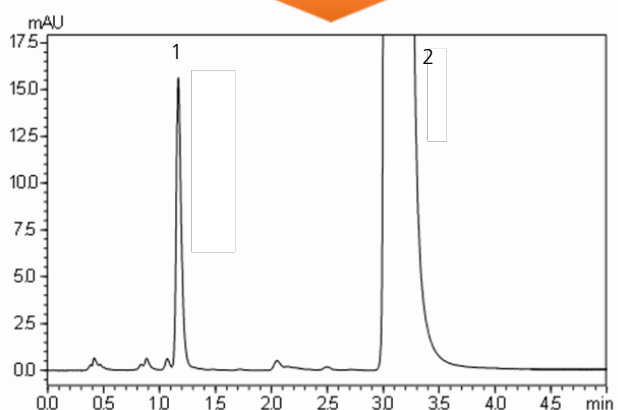
Shim-pack™ XR-ODSII

**Analysis of Irbesartan and Amlodipine
Besilate using UHPLC**

Keywords: hypertension, diabetic nephropathy



1. Amlodipine Besilate
2. Irbesartan



System	: Nexera™-i MT
Column	: Shim-pack XR-ODSII (75 mm L. × 3.0 mm I.D., 2.2 μm), P/N : 228-41624-91
Mobile phase	: Methanol / 0.02 mmol/L (Sodium) Phosphate Buffer (pH3.0) = 3 / 2
Flow rate	: 0.8 mL/min
Column temp.	: 40 °C
Injection volume	: 5 μL
Detection	: UV 237 nm (Semimicro cell)

Source : Application News L523 ([JP](#), [ENG](#))

CoreFocus, Shim-pack and Nexera are trademarks of Shimadzu Corporation or its affiliated companies in Japan and/or other countries.

Shimadzu Corporation
www.shimadzu.com/an/

For Research Use Only. Not for use in diagnostic procedures.

This publication may contain references to products that are not available in your country. Please contact us to check the availability of these products in your country.

The content of this publication shall not be reproduced, altered or sold for any commercial purpose without the written approval of Shimadzu.

Company names, products/service names and logos used in this publication are trademarks and trade names of Shimadzu Corporation, its subsidiaries or its affiliates, whether or not they are used with trademark symbol "TM" or "®". Third-party trademarks and trade names may be used in this publication to refer to either the entities or their products/services, whether or not they are used with trademark symbol "TM" or "®".

Shimadzu disclaims any proprietary interest in trademarks and trade names other than its own.

The information contained herein is provided to you "as is" without warranty of any kind including without limitation warranties as to its accuracy or completeness. Shimadzu does not assume any responsibility or liability for any damage, whether direct or indirect, relating to the use of this publication. This publication is based upon the information available to Shimadzu on or before the date of publication, and subject to change without notice.

Related Products

Some products may be updated to newer models.



> Shim-pack XR Series
HPLC Column

Related Solutions

> Small Molecule
Pharmaceutical

> 低分子医薬品

> Price Inquiry

> Product Inquiry

> Technical Service /
Support Inquiry

> Other Inquiry