

CoreFocus
Report
No.159A

LC

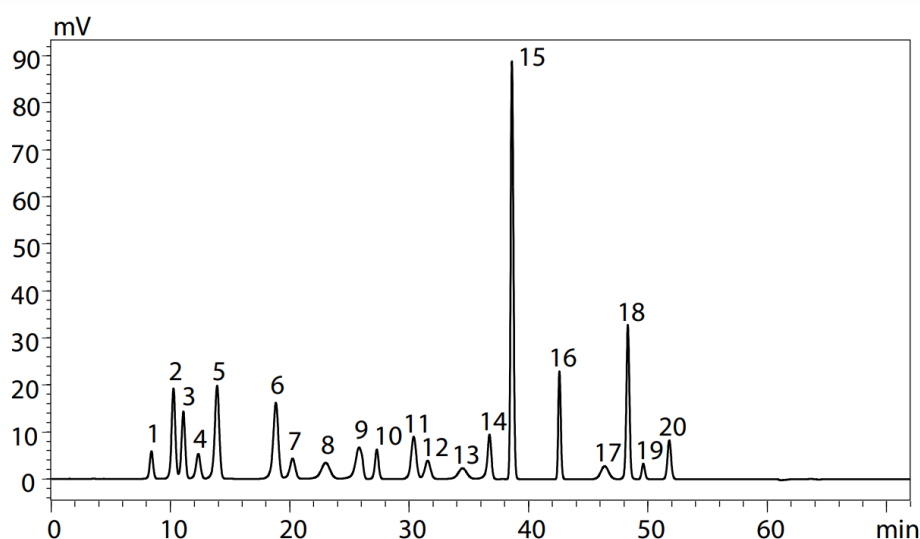
Ion-exchange

Shim-pack Series

Shim-pack™ Amino-Na

**Analysis of Proteinogenic Amino Acids
under Na Type Condition**

Keywords: post-column derivatization, OPA, α -phthalaldehyde, protein hydrolysate



1. Aspartic Acid
2. Threonine
3. Serine
4. Glutamic Acid
5. Proline
6. Glycine
7. Alanine
8. Cystine
9. Valine
10. Methionine
11. Isoleucine
12. Leucine
13. Tyrosine
14. Phenylalanine
15. γ -Aminobutyric acid (GABA)
16. Histidine
17. Tryptophan
18. Lysine
19. Ammonia
20. Arginine
(each 0.1 μ mol/L)

System	: Nexera™ Post-Column Amino Acid Analysis System
Column	: Shim-pack Amino-Na (100 mm x 6.0 mm I.D., 5 μ m), P/N : 228-18837-91
Ammonia trap column	: Shim-pack ISC-30/S0504Na (50 mm x 4.0 mm I.D.), P/N : 228-14206-91
Mobile phase	: Amino Acid Mobile Phase Kits (Na type), P/N : 228-21195-94 Gradient elution
Flow rate	: 0.4-0.6 mL/min
Column temp.	: 60 °C
Injection vol.	: 10 μ L
Vial	: Shimadzu vials, LC, 1.5 mL, glass, P/N : 228-15652-92
Reaction reagent	: Amino Acid Reagent Kits, P/N : 228-21195-93
Flow rate of reagent	: 0.2 mL/min for each
Reaction temp.	: 60 °C
Detection	: Fluorescence, Ex. 350 nm Em. 450 nm

Source : Application News L568A ([JP](#), [ENG](#))

CoreFocus, Nexera and Shim-pack are trademarks of Shimadzu Corporation or its affiliated companies in Japan and/or other countries.

Shimadzu Corporation
www.shimadzu.com/an/

For Research Use Only. Not for use in diagnostic procedures.

This publication may contain references to products that are not available in your country. Please contact us to check the availability of these products in your country.

The content of this publication shall not be reproduced, altered or sold for any commercial purpose without the written approval of Shimadzu.

Company names, products/service names and logos used in this publication are trademarks and trade names of Shimadzu Corporation, its subsidiaries or its affiliates, whether or not they are used with trademark symbol "TM" or "®". Third-party trademarks and trade names may be used in this publication to refer to either the entities or their products/services, whether or not they are used with trademark symbol "TM" or "®".

Shimadzu disclaims any proprietary interest in trademarks and trade names other than its own.

The information contained herein is provided to you "as is" without warranty of any kind including without limitation warranties as to its accuracy or completeness. Shimadzu does not assume any responsibility or liability for any damage, whether direct or indirect, relating to the use of this publication. This publication is based upon the information available to Shimadzu on or before the date of publication, and subject to change without notice.

Related Products

Some products may be updated to newer models.

HPLC Column Solutions - Reversed phase and Normal phase -

Shim-pack

> Shim-pack Amino Series

HPLC Column

Related Solutions

> Food and Nutrition

> 栄養・機能性成分

> Price Inquiry

> Product Inquiry

> Technical Service / Support Inquiry

> Other Inquiry