

CoreFocus
Report
No.166A

LC

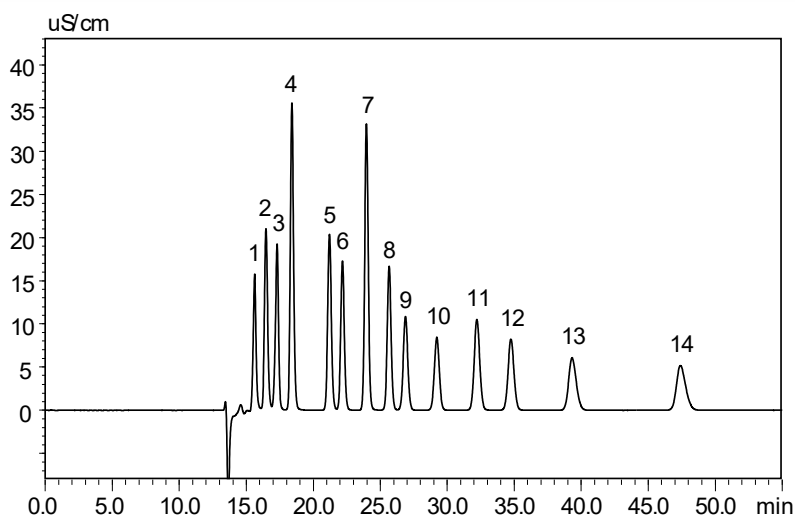
Ion-exclusion

Shim-pack Series

Shim-pack™ SCR-102H

Analysis of Organic acids by Conductive detector

Keywords: post-column method



1. Phosphoric acid
 2. Citric acid
 3. Pyruvic acid
 4. Malic acid
 5. Succinic acid
 6. Lactic acid
 7. Formic acid
 8. Acetic acid
 9. Levulinic acid
 10. Pyroglutamic acid
 11. Isobutyric acid
 12. Butyric acid
 13. Isovaleric acid
 14. Valeric acid
- (each 1000 mg/L)

System	: Nexera™ organic acid analysis system
Column	: Shim-pack SCR-102H (300 mm x 8.0 mm I.D., 7 μm) x 2, P/N : 228-17893-91
Guard column	: Guard column SCR-102H (50 mm x 6.0 mm I.D.), P/N : 228-17924-91
Mobile phase	: 5 mmol/L <i>p</i> -Toluenesulfonic acid, P/N : S228-61465-91
Flow rate	: 1.0 mL/min
pH Buffering solution	: 5 mmol/L <i>p</i> -Toluenesulfonic acid, 20 mmol/L Bis-tris, 0.1 mmol/L EDTA, P/N : 228-61465-91
Mixer	: Piping unit J, P/N : S228-21747-91
Column temp.	: 40 °C
Injection vol.	: 10 μL
Vial	: 1.5 mL, IC, Polypropylene (manufactured by Shimadzu GLC Ltd.)
Detection	: Conductivity detector

Source : Application News L578 ([JP](#), [ENG](#))

CoreFocus, Nexera and Shim-pack are trademarks of Shimadzu Corporation or its affiliated companies in Japan and/or other countries.

Shimadzu Corporation
www.shimadzu.com/an/

For Research Use Only. Not for use in diagnostic procedures.

This publication may contain references to products that are not available in your country. Please contact us to check the availability of these products in your country.

The content of this publication shall not be reproduced, altered or sold for any commercial purpose without the written approval of Shimadzu.

Company names, products/service names and logos used in this publication are trademarks and trade names of Shimadzu Corporation, its subsidiaries or its affiliates, whether or not they are used with trademark symbol "TM" or "®". Third-party trademarks and trade names may be used in this publication to refer to either the entities or their products/services, whether or not they are used with trademark symbol "TM" or "®".

Shimadzu disclaims any proprietary interest in trademarks and trade names other than its own.

The information contained herein is provided to you "as is" without warranty of any kind including without limitation warranties as to its accuracy or completeness. Shimadzu does not assume any responsibility or liability for any damage, whether direct or indirect, relating to the use of this publication. This publication is based upon the information available to Shimadzu on or before the date of publication, and subject to change without notice.

Related Products

Some products may be updated to newer models.

HPLC Column Solutions - Reversed phase and Normal phase -

Shim-pack

> Shim-pack SCR Series

HPLC Column

Related Solutions

> Food and Nutrition

> 栄養・機能性成分

> Price Inquiry

> Product Inquiry

> Technical Service / Support Inquiry

> Other Inquiry