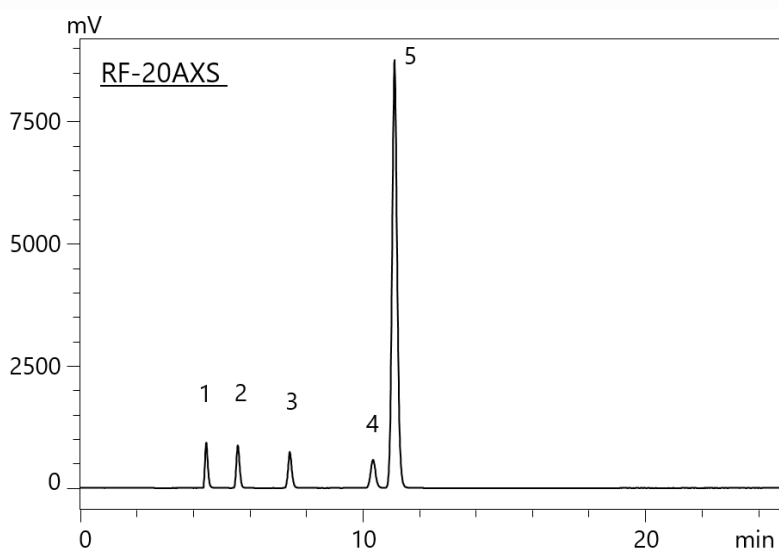


**CoreFocus**  
**Report**  
**No.283**

LC Reversed-phase Shim-pack Series

**Shim-pack™ GIST C18**  
**Analysis of Isopropyl methylphenol (IPMP)**  
**and Butyl Paraben**

**Keywords: medical soap, antibacterial soaps, the European Chemicals Agency (ECHA), the United States Food and Drug Administration (FDA), triclosan**



1. Methyl paraben
2. Ethyl paraben
3. Propyl paraben
4. Butyl paraben
5. Isopropyl methylphenol (IPMP)  
(25 mg/L each)

System	: Nexera™ lite
Column	: Shim-pack GIST C18, (250 x 4.6 mm I.D., 5 µm), P/N : 227-30017-08
Flow rate	: 1.0 mL/min
Mobile phase	: A) water B) acetonitrile B. Conc: 50%
Column temp.	: 40 °C
Injection volume	: 10 µL
Vial	: LabTotal™ Vial for LC/LCMS, P/N : 227-34001-01
Detection (FL)	: RF-20AXS Em : 280 nm, Ex : 305 nm

Source : Application News L586 ([JP](#), [ENG](#))

CoreFocus, Nexera, Shim-pack and LabTotal are trademarks of Shimadzu Corporation or its affiliated companies in Japan and/or other countries.

**Shimadzu Corporation**  
[www.shimadzu.com/an/](http://www.shimadzu.com/an/)

**For Research Use Only. Not for use in diagnostic procedures.**

This publication may contain references to products that are not available in your country. Please contact us to check the availability of these products in your country.

The content of this publication shall not be reproduced, altered or sold for any commercial purpose without the written approval of Shimadzu.

Company names, products/service names and logos used in this publication are trademarks and trade names of Shimadzu Corporation, its subsidiaries or its affiliates, whether or not they are used with trademark symbol "TM" or "®".

Third-party trademarks and trade names may be used in this publication to refer to either the entities or their products/services, whether or not they are used with trademark symbol "TM" or "®".

Shimadzu disclaims any proprietary interest in trademarks and trade names other than its own.

The information contained herein is provided to you "as is" without warranty of any kind including without limitation warranties as to its accuracy or completeness. Shimadzu does not assume any responsibility or liability for any damage, whether direct or indirect, relating to the use of this publication. This publication is based upon the information available to Shimadzu on or before the date of publication, and subject to change without notice.