

CoreFocus
Report
No.296

LC

Reversed-phase

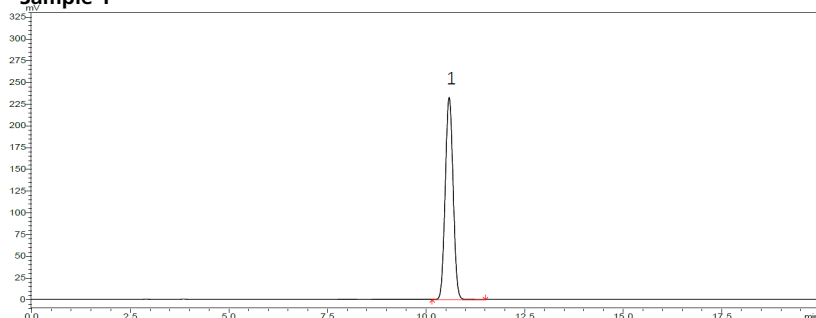
Shim-pack Series

Shim-pack™ GIST C18

Analysis of Mesotrione Drug Substance

Keywords: pesticide, herbicide

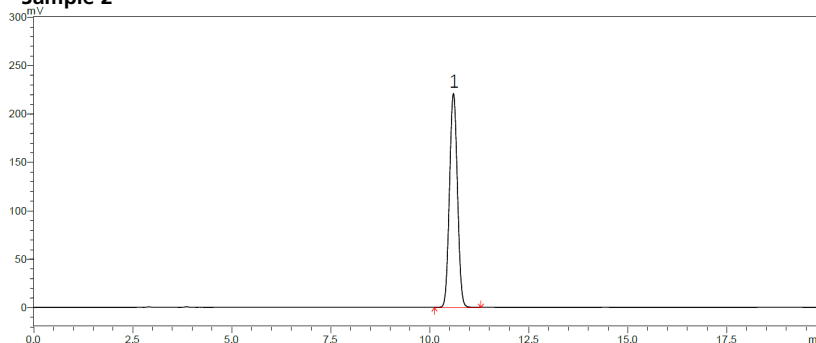
Sample 1



1. Mesotrione

Sample 1: Reference solution
Weigh 0.1 g (accurate to 0.0002 g) of Mesotrione standard in a 50 mL volumetric flask, dilute to the mark with acetonitrile, ultrasonically shake for 5 min to dissolve the sample, cool to room temperature, and shake well. Use a pipette to transfer 5 mL of the above solution into a 50 mL volumetric flask, dilute to the mark with mobile phase, and shake well.

Sample 2



Sample 2: Test solution
Weigh the dried sample containing 0.1 g of Mesotrione (accurate to 0.0002 g) into a 50 mL volumetric flask, dilute to the mark with acetonitrile, and shake it with ultrasonic for 5 min to dissolve the sample, cool to room temperature, and shake uniform. Use a pipette to transfer 5 mL of the above solution into a 50 mL volumetric flask, dilute to the mark with mobile phase, and shake well.

Column	: Shim-pack GIST C18 (250 mm x 4.6 mm I.D., 5 µm), P/N : 227-30017-08
Mobile phase	: Acetonitrile : Water (pH 3.0) containing phosphoric acid = 40 : 60
Flow rate	: 1.0 mL/min
Column temp.	: 30 °C
Injection vol.	: 5 µL
Vial	: SHIMADZU LabTotal™ Vial for LC/LCMS, P/N : 227-34001-01
Detection	: UV at 270 nm

CoreFocus, Shim-pack and LabTotal are trademarks of Shimadzu Corporation or its affiliated companies in Japan and/or other countries.

Shimadzu Corporation
www.shimadzu.com/an/

For Research Use Only. Not for use in diagnostic procedures.

This publication may contain references to products that are not available in your country. Please contact us to check the availability of these products in your country.

The content of this publication shall not be reproduced, altered or sold for any commercial purpose without the written approval of Shimadzu.

Company names, products/service names and logos used in this publication are trademarks and trade names of Shimadzu Corporation, its subsidiaries or its affiliates, whether or not they are used with trademark symbol "TM" or "®". Third-party trademarks and trade names may be used in this publication to refer to either the entities or their products/services, whether or not they are used with trademark symbol "TM" or "®".

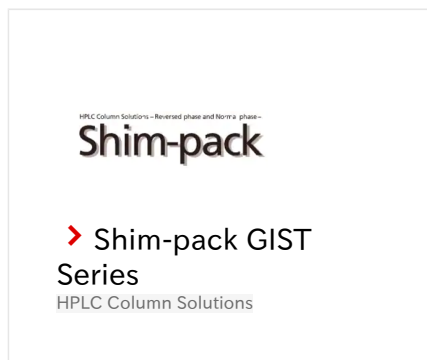
Shimadzu disclaims any proprietary interest in trademarks and trade names other than its own.

The information contained herein is provided to you "as is" without warranty of any kind including without limitation warranties as to its accuracy or completeness. Shimadzu does not assume any responsibility or liability for any damage, whether direct or indirect, relating to the use of this publication. This publication is based upon the information available to Shimadzu on or before the date of publication, and subject to change without notice.

➤ Please fill out the survey

Related Products

Some products may be updated to newer models.



Related Solutions

➤ Small Molecule
Pharmaceutical

➤ 低分子医薬品

➤ Price Inquiry

➤ Product Inquiry

➤ Technical Service /
Support Inquiry

➤ Other Inquiry