

CoreFocus
Report
No.299

LC

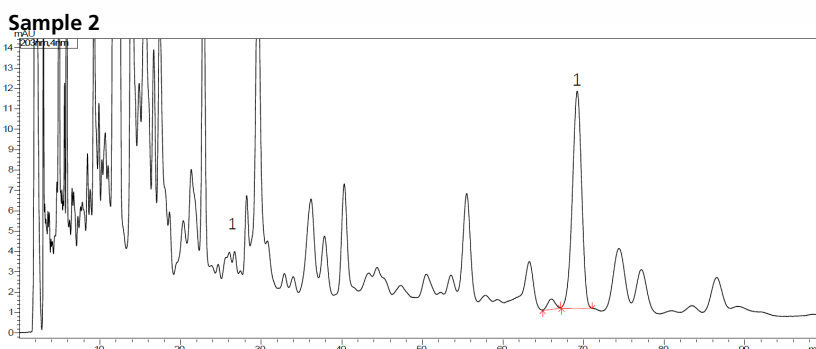
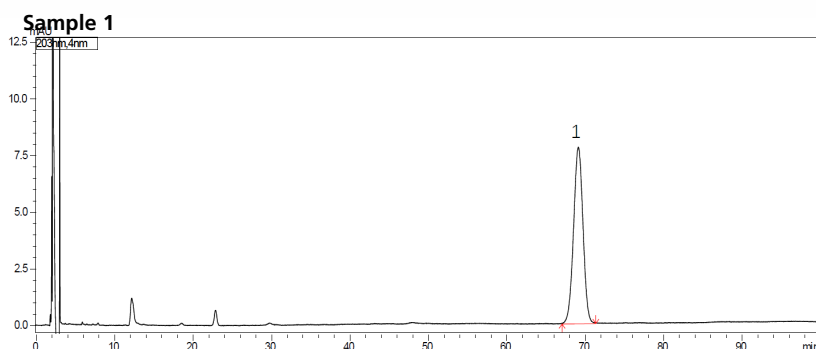
Reversed-phase

Shim-pack™ Series

Shim-pack Scepter™ HD-C18

Analysis of Ginsenoside Rg1 in Medicinal Liquor

Keywords: ginseng, saponins, herbal medicine



1. Ginsenoside Rg1

Sample 1: Reference solution

Ginsenoside Rg1 reference in methanol (0.4 mg/mL)

Sample 2: Test solution

Take 100 mL of medicinal liquor, steam until no alcohol, shake and extract 4 times with water-saturated *n*-butanol, 25 mL each time, combine the *n*-butanol solution, evaporate to dryness, add 5 mL of 1 % sodium hydroxide solution to the residue. Dissolve, pass through the processed D101 macroporous adsorption resin column (inner diameter 1.5 cm, column height 15 cm), eluting with 1 % sodium hydroxide solution until the eluent is colorless, discard the alkaline washing solution, wash with water. Remove to neutral, discard the aqueous solution, and then elute with 20 % ethanol until the eluent is colorless, discard the 20 % ethanol eluent, and then elute with 80 % ethanol 80 mL, collect the eluent and evaporate to dryness. Add 2 mL of methanol to the residue to dissolve it, add it to a neutral alumina column (100-200 mesh, 5 g, inner diameter 1.5 cm, dry packed column), elution with 50 % methanol 50 mL, collect the eluate, evaporate to dryness, add proper amount of methanol to the residue to dissolve, transfer to a 10 mL measuring flask, add methanol to dilute to the mark, shake well.

Column	: Shim-pack Scepter HD-C18 (250 mm x 4.6 mm I.D., 5 µm), P/N : 227-31024-06
Mobile phase	: 1.0 % Phosphoric acid : Acetonitrile = 82 : 18
Flow rate	: 1.0 mL/min
Column temp.	: 40 °C
Injection vol.	: 10 µL
Vial	: SHIMADZU LabTotal™ Vial for LC/LCMS, P/N : 227-34001-01
Detection	: UV at 203 nm

CoreFocus, Shim-pack, Shim-pack Scepter and LabTotal are trademarks of Shimadzu Corporation or its affiliated companies in Japan and/or other countries.

Shimadzu Corporation
www.shimadzu.com/an/

For Research Use Only. Not for use in diagnostic procedures.

This publication may contain references to products that are not available in your country. Please contact us to check the availability of these products in your country.

The content of this publication shall not be reproduced, altered or sold for any commercial purpose without the written approval of Shimadzu.

Company names, products/service names and logos used in this publication are trademarks and trade names of Shimadzu Corporation, its subsidiaries or its affiliates, whether or not they are used with trademark symbol "TM" or "®". Third-party trademarks and trade names may be used in this publication to refer to either the entities or their products/services, whether or not they are used with trademark symbol "TM" or "®".

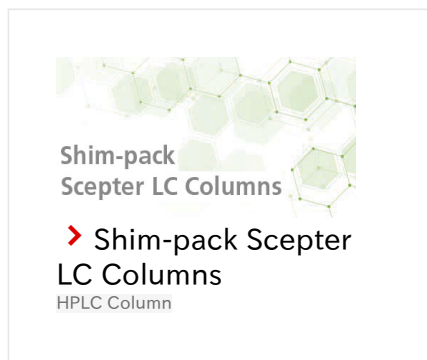
Shimadzu disclaims any proprietary interest in trademarks and trade names other than its own.

The information contained herein is provided to you "as is" without warranty of any kind including without limitation warranties as to its accuracy or completeness. Shimadzu does not assume any responsibility or liability for any damage, whether direct or indirect, relating to the use of this publication. This publication is based upon the information available to Shimadzu on or before the date of publication, and subject to change without notice.

➤ Please fill out the survey

Related Products

Some products may be updated to newer models.



Related Solutions

➤ Small Molecule
Pharmaceutical

➤ 低分子医薬品

➤ Price Inquiry

➤ Product Inquiry

➤ Technical Service /
Support Inquiry

➤ Other Inquiry