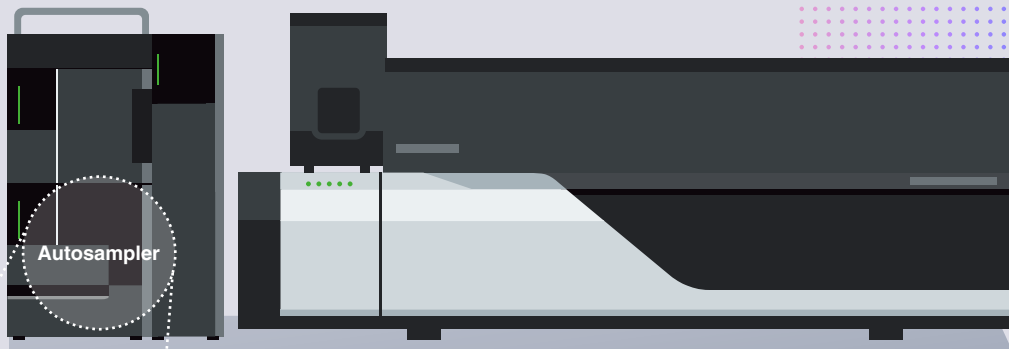


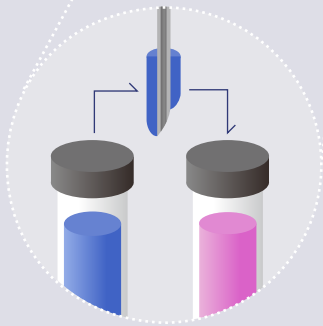
Carry the Day with No Carryover

Shimadzu LC designed to reduce carryover to your satisfaction

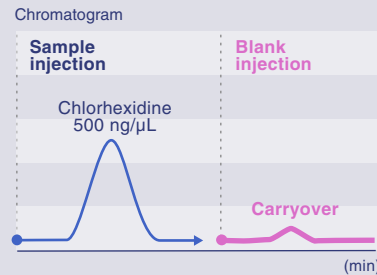
※Not a guarantee of absolute zero carryover



What is carryover?



Carryover is a phenomenon where you see a peak from the previous injection remaining in the current injection



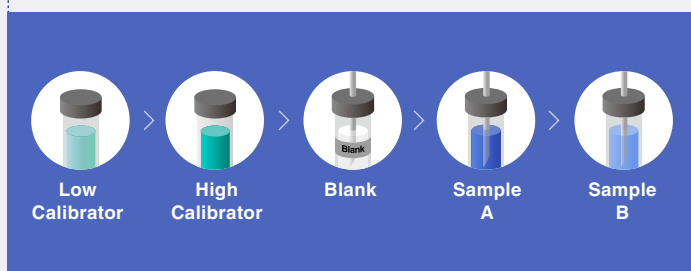
This is a visual representation of carryover. The blank injection that should have no peaks still detects chlorhexidine from the previous injection.

[Click here to learn more](#)

Look into the future without carryover

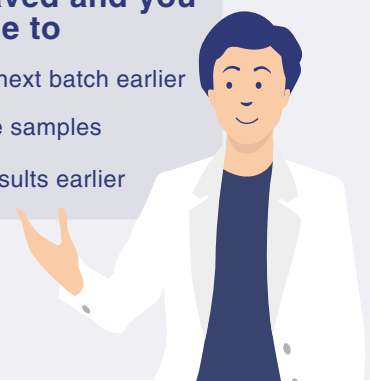


Future batch



Time is saved and you will be able to

- ⌚ Start the next batch earlier
- 🔄 Run more samples
- 🕒 Report results earlier



[Click here to learn more](#)