

**CoreFocus**  
**Report**  
**No.6**

LC

Reversed-phase

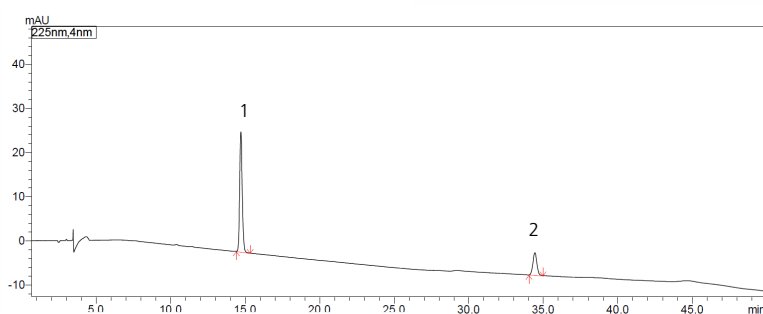
Shim-pack Series

**Shim-pack™ GIST C18**

**Analysis of Oxymatrine and Matrine in  
*Sophora***

**Keywords: Herbal medicine, Alkaloid**

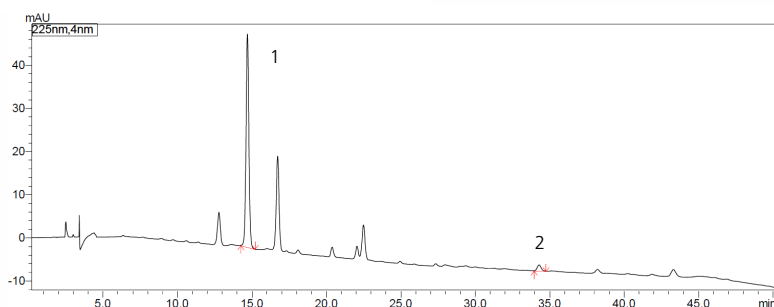
Chromatogram of Standard Mix



1. Oxymatrine
2. Matrine

Standard Mix  
Oxymatrine in Ethanol (50 µg/mL)  
Matrine in Ethanol (50 µg/mL)

Chromatogram of *Sophora*



**Pretreatment procedure**

- a. Collect sample (commercially available *Sophora* powder) and passed through No. 3 sieve.
- b. Weigh 0.3g of sample and transfer into a stoppered conical flask.
- c. Add 0.4mL of concentrated ammonia test solution and 25 mL of chloroform into flask.
- d. Close the stopper and reweigh.
- e. Ultrasonically treat it (power 250 W, frequency 33 kHz) for 40 minutes.
- f. After cooling, weigh the conical flask.
- g. Add chloroform to bring the final weight to the pre-reflux weight (Step d).
- h. Shake well and filter it.
- i. Collect 10mL of filtrate (Step h) and let the solvent dry.
- j. Add an appropriate amount of Absolute ethanol to dissolve the residue.
- k. Transfer into a 10mL flask and add Absolute ethanol to bring the final volume to 10mL and shake well.

Column	: Shim-pack GIST C18, (250 x 4.6 mm I.D., 5 µm), P/N: 227-30017-08
Mobile phase:	: A) 0.01 mol/L Ammonium acetate containing Ammonium hydroxide (pH8.1) B) Acetonitrile : Mobile phase A = 3 : 2
Time program	: B Conc. 0%B (0 min) → 30% (20 min) → 40% (40 min) → 60% (50 min)
Flow rate	: 1.0 mL/min
Column Temp.	: 20°C
Detection	: UV 225 nm
Injection Vol.	: 5 µL(Sample 1) / 7 µL(Sample 2)
Vial	: LabTotal™ Vial for LC/LCMS P/N: 227-34001-01

CoreFocus, Shim-pack and LabTotal are trademarks of Shimadzu Corporation or its affiliated companies in Japan and/or other countries.

**Shimadzu Corporation**  
**www.shimadzu.com/an/**

**For Research Use Only. Not for use in diagnostic procedures.**

This publication may contain references to products that are not available in your country. Please contact us to check the availability of these products in your country.

The content of this publication shall not be reproduced, altered or sold for any commercial purpose without the written approval of Shimadzu.

Company names, products/service names and logos used in this publication are trademarks and trade names of Shimadzu Corporation, its subsidiaries or its affiliates, whether or not they are used with trademark symbol "TM" or "®". Third-party trademarks and trade names may be used in this publication to refer to either the entities or their products/services, whether or not they are used with trademark symbol "TM" or "®".

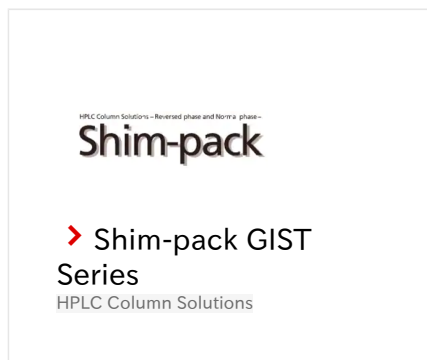
Shimadzu disclaims any proprietary interest in trademarks and trade names other than its own.

The information contained herein is provided to you "as is" without warranty of any kind including without limitation warranties as to its accuracy or completeness. Shimadzu does not assume any responsibility or liability for any damage, whether direct or indirect, relating to the use of this publication. This publication is based upon the information available to Shimadzu on or before the date of publication, and subject to change without notice.

➤ Please fill out the survey

## Related Products

Some products may be updated to newer models.



## Related Solutions

➤ Small Molecule  
Pharmaceutical

➤ 低分子医薬品

➤ Price Inquiry

➤ Product Inquiry

➤ Technical Service /  
Support Inquiry

➤ Other Inquiry