

CoreFocus
Report
No.18

LC

Reversed-phase

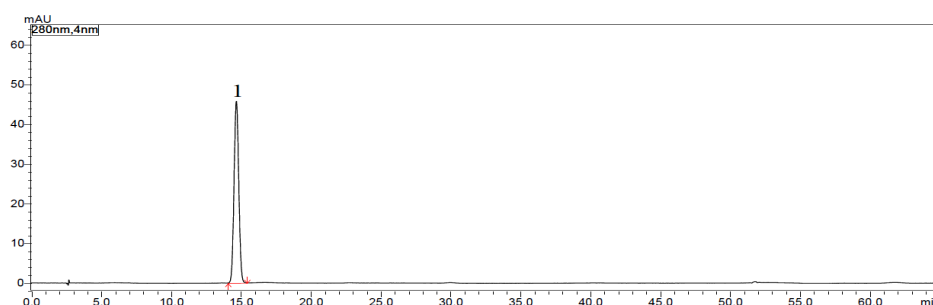
Shim-pack Series

Shim-pack™ GIS C18

Analysis of Baicalin in *Scutellaria*

Keywords: Chinese herbal medicine, Baicalin

Chromatogram of Standard Mix

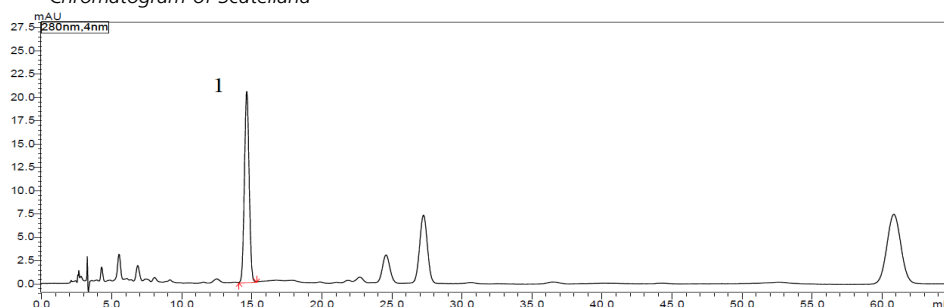


1. Baicalin

Pretreatment procedure
<Standard Mix>
Baicalin
(60 µg/mL in Methanol)

Collect Baicalin and dry under reduced pressure at 60°C for 4 hours.

Chromatogram of *Scutellaria*



<Scutellaria>

- Weigh 0.3 g of sample (commercially available *Scutellaria* powder) and transfer into a stoppered conical flask.
- Add 40 mL of 70% Ethanol/Water into flask.
- Close the stopper and reweigh.
- Heat to reflux for 3 hour.
- After cooling, filter into a 100mL volumetric flask.
- Wash the volumetric flask with a small amount of 70 % Ethanol/Water
- Filter the washing liquid (Step f) into same flask.
- Add 70 % Ethanol/Water to bring the final volume to 100mL.
- Shake well and collect 1mL and transfer into 10mL flask.
- Add Methanol to bring the final volume to 10 mL and shake well.

Column	: Shim-pack GIS C18 (250 mm x 4.6 mm I.D., 5 µm) P/N: 227-30017-08
Mobile phase	: A) Methanol : B) Water : C) Phosphoric acid A: B: C=47:53:0.2 (Isocratic elution)
Flow rate	: 1.0 mL/min
Column Temperature	: 40°C
Injection volume	: 10 µL
Detection	: UV 280 nm
Vial	: LabTotal™ Vial for LC LC/MS, P/N: 227-34001-01

CoreFocus, Shim-pack and LabTotal are trademarks of Shimadzu Corporation or its affiliated companies in Japan and/or other countries.

Shimadzu Corporation
www.shimadzu.com/an/

For Research Use Only. Not for use in diagnostic procedures.

This publication may contain references to products that are not available in your country. Please contact us to check the availability of these products in your country.

The content of this publication shall not be reproduced, altered or sold for any commercial purpose without the written approval of Shimadzu.

Company names, products/service names and logos used in this publication are trademarks and trade names of Shimadzu Corporation, its subsidiaries or its affiliates, whether or not they are used with trademark symbol "TM" or "®".

Third-party trademarks and trade names may be used in this publication to refer to either the entities or their products/services, whether or not they are used with trademark symbol "TM" or "®".

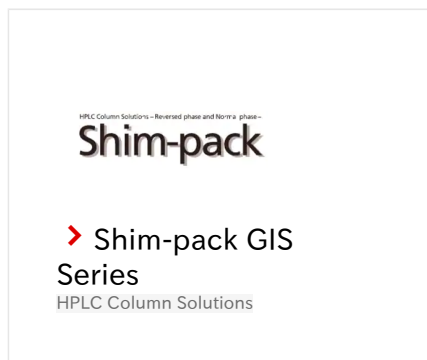
Shimadzu disclaims any proprietary interest in trademarks and trade names other than its own.

The information contained herein is provided to you "as is" without warranty of any kind including without limitation warranties as to its accuracy or completeness. Shimadzu does not assume any responsibility or liability for any damage, whether direct or indirect, relating to the use of this publication. This publication is based upon the information available to Shimadzu on or before the date of publication, and subject to change without notice.

➤ Please fill out the survey

Related Products

Some products may be updated to newer models.



Related Solutions

➤ Small Molecule
Pharmaceutical

➤ 低分子医薬品

➤ Price Inquiry

➤ Product Inquiry

➤ Technical Service /
Support Inquiry

➤ Other Inquiry