

CoreFocus
Report
No.20

LC

Reversed-phase

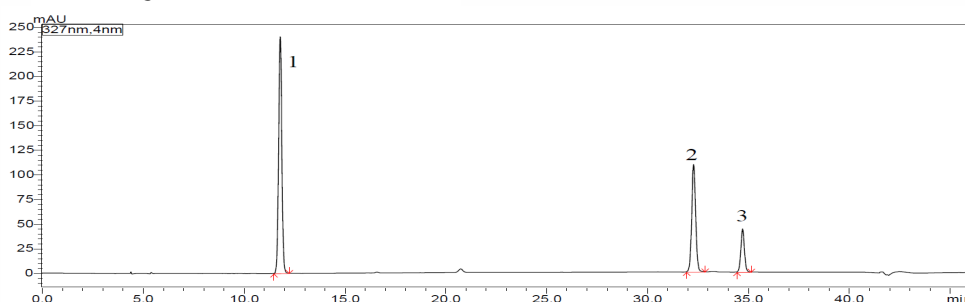
Shim-pack Series

Shim-pack™ VP-ODS

Analysis of Phenolic acids in *Honeysuckle*

Keywords: Chinese herbal medicine, Phenolic acids, Chlorogenic acid

Chromatogram of Standard Mix

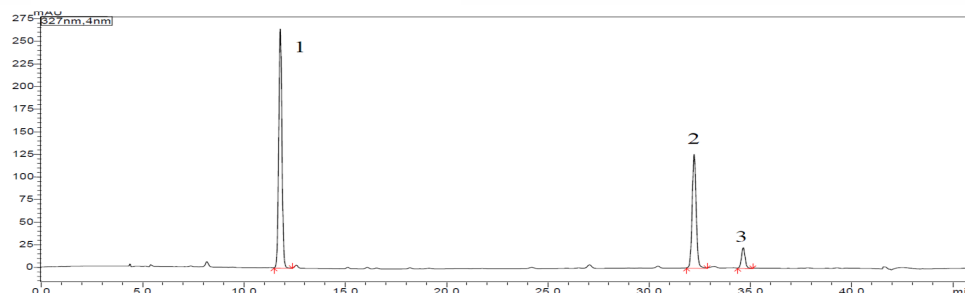


1. Chlorogenic acid Methanol
2. 3,5-Di-O-Caffeoylquinic Acid
3. 4,5-Di-O-Caffeoylquinic Acid

Standard Mix

Chlorogenic acid Methanol
(0.28 mg/mL in 75% Methanol)
3,5-Di-O-Caffeoylquinic Acid
(0.15 mg/mL in 75% Methanol)
4,5-Di-O-Caffeoylquinic Acid
(44 µg/mL in 75% Methanol)

Chromatogram of *Honeysuckle*



Pretreatment procedure

- a. Collect sample (commercially available *Honeysuckle* powder) and passed through No. 4 sieve.
- b. Weigh 0.5 g of sample and transfer into a stoppered conical flask.
- c. Add 50 mL of 75% Methanol into flask.
- d. Close the stopper and reweigh.
- e. Ultrasonically treat it (power 500 W, frequency 40 kHz) for 30 minutes.
- f. After cooling, weigh the conical flask.
- g. Add 75 % Methanol to bring the final weight to the pre-reflux weight (Step d).
- h. Shake well and filter into a sample vial.

System	: LC-20AD
Column	: Shim-pack VP-ODS (5µm, 250 x 4.6 mm I.D.) P/N: 228-34937-92
Mobile phase	: A) 0.1% Phosphoric acid : B) Acetonitrile
Gradient program	: B Conc. 14% (0 min) → 19% (8 - 14 min) → 31% (34 min) → 90% (35 - 40 min) → 14% (41 - 50 min)
Flow rate	: 0.7 mL/min
Column Temperature	: 25°C
Injection volume	: 2 µL
Detection	: UV 327 nm
Vial	: LabTotal™ Vial for LC LC/MS, P/N: 227-34001-01

CoreFocus, Shim-pack and LabTotal are trademarks of Shimadzu Corporation or its affiliated companies in Japan and/or other countries.

Shimadzu Corporation

www.shimadzu.com/an/

For Research Use Only. Not for use in diagnostic procedures.

This publication may contain references to products that are not available in your country. Please contact us to check the availability of these products in your country.

The content of this publication shall not be reproduced, altered or sold for any commercial purpose without the written approval of Shimadzu.

Company names, products/service names and logos used in this publication are trademarks and trade names of Shimadzu Corporation, its subsidiaries or its affiliates, whether or not they are used with trademark symbol "TM" or "®". Third-party trademarks and trade names may be used in this publication to refer to either the entities or their products/services, whether or not they are used with trademark symbol "TM" or "®".

Shimadzu disclaims any proprietary interest in trademarks and trade names other than its own.

The information contained herein is provided to you "as is" without warranty of any kind including without limitation warranties as to its accuracy or completeness. Shimadzu does not assume any responsibility or liability for any damage, whether direct or indirect, relating to the use of this publication. This publication is based upon the information available to Shimadzu on or before the date of publication, and subject to change without notice.

➤ Please fill out the survey

Related Products

Some products may be updated to newer models.



Related Solutions

➤ Small Molecule
Pharmaceutical

➤ 低分子医薬品

➤ Price Inquiry

➤ Product Inquiry

➤ Technical Service /
Support Inquiry

➤ Other Inquiry