

CoreFocus
Report
No.21

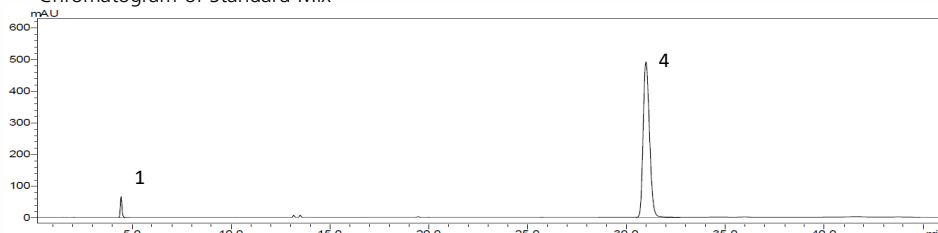
LC Reversed-phase Shim-pack Series

Shim-pack™ GIS C18

Analysis of Citrate and Chlorogenic acid in Processed *Mume Fructus*

Keywords: Chinese herbal medicine, *Fructus*, Citrate, Chlorogenic acid

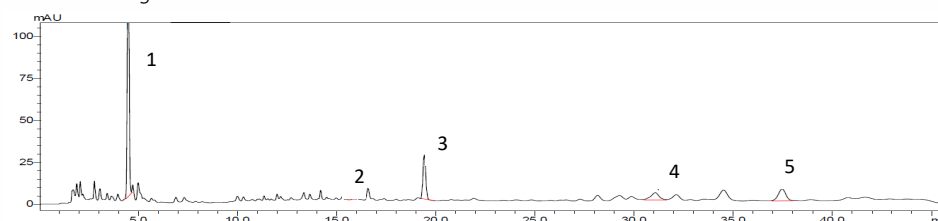
Chromatogram of Standard Mix



1. Citrate
2. Chlorogenic acid

Standard Mix
Citrate (1mg/mL in Water)
Chlorogenic acid (1mg/mL in Water)

Chromatogram of medicinal material of *Mume Fructus*



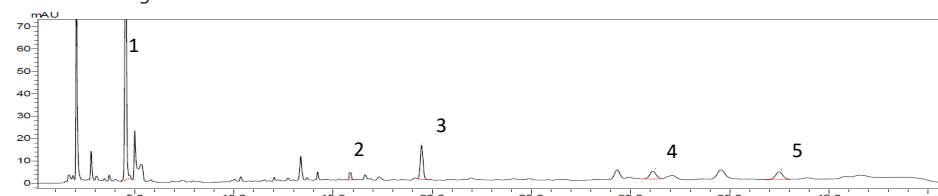
<Medicinal material of *Mume Fructus*>

- Weigh 1 g of this medicinal material of *Mume Fructus* and transfer into a stoppered Erlenmeyer flask
- Add 50 mL of water into flask.
- Heat to reflux for 30 minutes.
- After cooling, shake well and filter into a sample vial..

<*Mume Fructus*>

- Collect sample (commercially available *Mume Fructus* powder),
- grind finely.
- Weigh 0.4 g and transfer into a 50 mL measuring flask.
- Add an amount of water to dissolve and dilute to the mark.
- Shake well and filter into a sample vial.

Chromatogram of *Mume Fructus*



System	: LC-40B X3
Column	: Shim-pack GIS C18 (150 mm x 2.1 mm I.D., 2 μm) P/N: 227-30093-05
Mobile phase	: A) 0.5% Ammonium phosphate containing phosphoric acid (pH 2.91) : B) Acetonitrile
Time program	: B Conc. 1% (0.0 min) → 2% (3.0 min) → 8% (9.0-30.0 min) → 10% (40.0 min) → 1% (41.0-46.0 min)
Flow rate	: 0.2 mL/min
Column Temperature	: 30°C
Injection volume	: 1 μL
Detection	: UV 210 nm
Vial	: LabTotal™ Vial for LC LC/MS, P/N: 227-34001-01

CoreFocus, Shim-pack and LabTotal are trademarks of Shimadzu Corporation or its affiliated companies in Japan and/or other countries.

Shimadzu Corporation
www.shimadzu.com/an/

For Research Use Only. Not for use in diagnostic procedures.

This publication may contain references to products that are not available in your country. Please contact us to check the availability of these products in your country.

The content of this publication shall not be reproduced, altered or sold for any commercial purpose without the written approval of Shimadzu.

Company names, products/service names and logos used in this publication are trademarks and trade names of Shimadzu Corporation, its subsidiaries or its affiliates, whether or not they are used with trademark symbol "TM" or "®". Third-party trademarks and trade names may be used in this publication to refer to either the entities or their products/services, whether or not they are used with trademark symbol "TM" or "®".

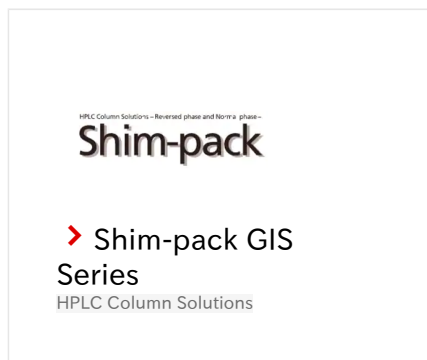
Shimadzu disclaims any proprietary interest in trademarks and trade names other than its own.

The information contained herein is provided to you "as is" without warranty of any kind including without limitation warranties as to its accuracy or completeness. Shimadzu does not assume any responsibility or liability for any damage, whether direct or indirect, relating to the use of this publication. This publication is based upon the information available to Shimadzu on or before the date of publication, and subject to change without notice.

➤ Please fill out the survey

Related Products

Some products may be updated to newer models.



Related Solutions

➤ Small Molecule
Pharmaceutical

➤ 低分子医薬品

➤ Price Inquiry

➤ Product Inquiry

➤ Technical Service /
Support Inquiry

➤ Other Inquiry