

**CoreFocus**  
**Report**  
**No.61**

LC

Reversed-phase

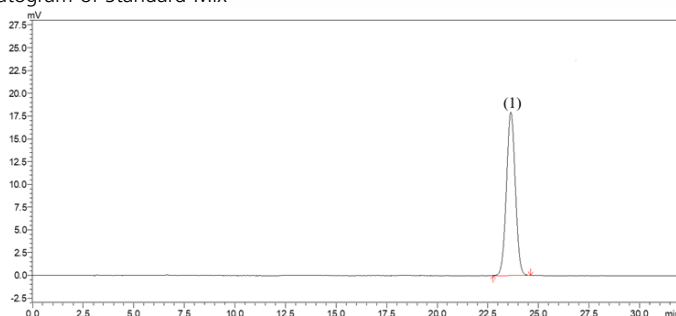
Shim-pack Series

**Shim-pack™ VP-ODS**

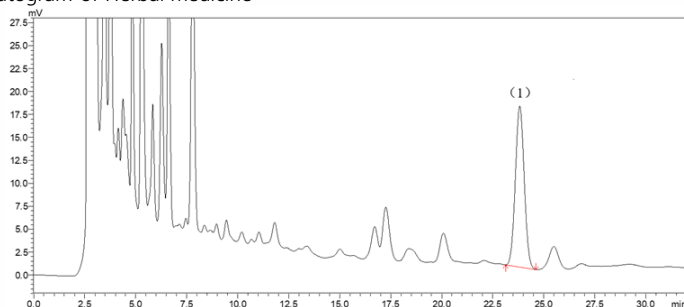
# **Analysis of Syringin in Herbal medicine**

**Keywords: lilac, glucoside of sinapyl alcohol**

Chromatogram of Standard Mix



Chromatogram of Herbal medicine



## 1. Syringin

Standard Mix  
Syringin (20 µg/mL in 50% Methanol)

### Pretreatment procedure

- Collect Herbal medicine and grind to a fine powder.
- Weigh 2 g of sample and transfer into a stoppered conical flask.
- Add 50 mL of 50% Methanol/Water into flask.
- Close the stopper and reweigh.
- Ultrasonically treat it (power 250 W, frequency 40 kHz) for 30 minutes.
- After cooling, weigh the conical flask.
- Add 50 % Methanol to bring the final weight to the pre-reflux weight (Step d).
- Shake well and filter it.
- Measure 10 mL of the filtrate.
- Evaporate to dryness.
- Add 50% Methanol to the residue about 5 mL, divided into parts.
- Add on a neutral alumina column (100-200 mesh, 4 g, inner diameter 1cm)
- Eluted with 90mL of 50% Methanol.
- Collect the effluent and eluate evaporate to dryness
- Transfer the residue to a 2 mL volumetric flask with 50% Methanol.
- Medium and dilute to the mark.
- Shake well and filter into a sample vial.

Column	: Shim-pack VP-ODS (250 mm x 4.6 mm I.D., 5 µm), P/N : 228-34937-92
Mobile phase	: A) Water B) Methanol A : B = 82 : 18
Flow rate	: 1.0 mL/min
Column temp.	: 30°C
Injection vol.	: 10 µL
Vial	: LabTotal™ Vial for LC/LCMS, P/N : 227-34001-01
Detection	: UV at 265 nm

CoreFocus, Shim-pack and LabTotal are trademarks of Shimadzu Corporation or its affiliated companies in Japan and/or other countries.

**Shimadzu Corporation**  
**www.shimadzu.com/an/**

### For Research Use Only. Not for use in diagnostic procedures.

This publication may contain references to products that are not available in your country. Please contact us to check the availability of these products in your country.

The content of this publication shall not be reproduced, altered or sold for any commercial purpose without the written approval of Shimadzu.

Company names, products/service names and logos used in this publication are trademarks and trade names of Shimadzu Corporation, its subsidiaries or its affiliates, whether or not they are used with trademark symbol "TM" or "®". Third-party trademarks and trade names may be used in this publication to refer to either the entities or their products/services, whether or not they are used with trademark symbol "TM" or "®".

Shimadzu disclaims any proprietary interest in trademarks and trade names other than its own.

The information contained herein is provided to you "as is" without warranty of any kind including without limitation warranties as to its accuracy or completeness. Shimadzu does not assume any responsibility or liability for any damage, whether direct or indirect, relating to the use of this publication. This publication is based upon the information available to Shimadzu on or before the date of publication, and subject to change without notice.

➤ Please fill out the survey

## Related Products

Some products may be updated to newer models.



## Related Solutions

➤ Small Molecule  
Pharmaceutical

➤ 低分子医薬品

➤ Price Inquiry

➤ Product Inquiry

➤ Technical Service /  
Support Inquiry

➤ Other Inquiry