

CoreFocus
Report
No.66

LC

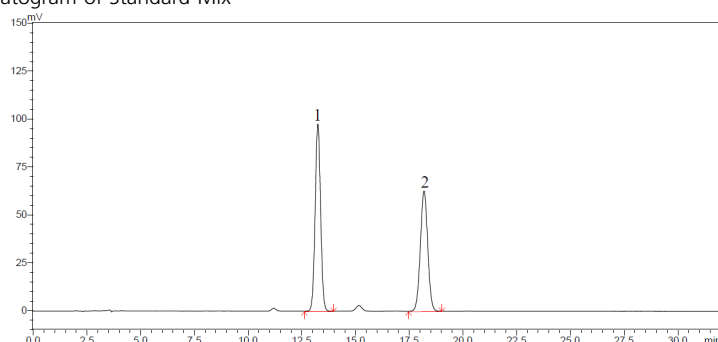
Reversed-phase

Shim-pack Series

Shim-pack™ VP-ODS
Analysis of Naringin and Neohesperidin in
Fructus Aurantii

Keywords: flavanone-7-O-glycoside, flavanone glycoside

Chromatogram of Standard Mix



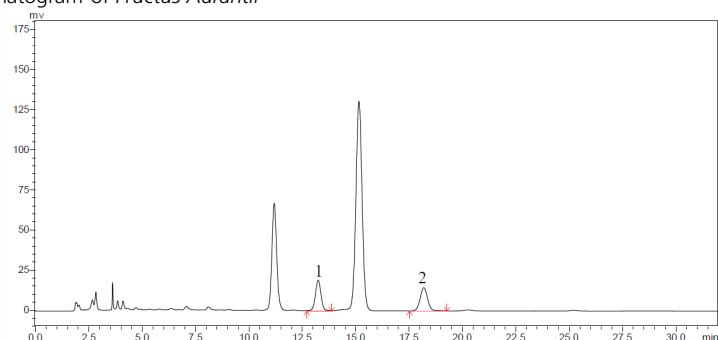
1. Naringin
2. Neohesperidin

Standard Mix

Naringin reference (80 µg/mL in Methanol)

Neohesperidin (80 µg/mL in Methanol)

Chromatogram of *Fructus Aurantii*



Pretreatment procedure

- a. Weigh 0.2g of sample (commercially available *Fructus Aurantii*) and transfer into a stoppered conical flask.
- b. Add 50 mL of 50% Methanol into flask.
- c. Close the stopper and reweigh.
- d. Heat to reflux for 1.5 hours.
- e. After cooling, weigh the conical flask.
- f. Add 50% Methanol to bring the final weight to the pre-reflux weight (Step d).
- g. Shake well and filter it.
- h. Collect 10 mL of filtrate (step g) and transfer into 25 mL measuring flask.
- i. Add Methanol to bring the final volume to 25mL.
- j. Shake well and transfer into a sample vial.

Column	: Shim-pack VP-ODS (250 mm x 4.6 mm I.D., 5 µm), P/N : 228-34937-92
Mobile phase	: Acetonitrile : Water = 20 : 80 containing Phosphoric acid (pH 3.0)
Flow rate	: 1.0 mL/min
Column temp.	: 40°C
Injection vol.	: 10 µL
Vial	: LabTotal™ Vial for LC/LCMS, P/N : 227-34001-01
Detection	: UV at 283 nm

CoreFocus, Shim-pack and LabTotal are trademarks of Shimadzu Corporation or its affiliated companies in Japan and/or other countries.

Shimadzu Corporation
www.shimadzu.com/an/

For Research Use Only. Not for use in diagnostic procedures.

This publication may contain references to products that are not available in your country. Please contact us to check the availability of these products in your country.

The content of this publication shall not be reproduced, altered or sold for any commercial purpose without the written approval of Shimadzu.

Company names, products/service names and logos used in this publication are trademarks and trade names of Shimadzu Corporation, its subsidiaries or its affiliates, whether or not they are used with trademark symbol "TM" or "®". Third-party trademarks and trade names may be used in this publication to refer to either the entities or their products/services, whether or not they are used with trademark symbol "TM" or "®".

Shimadzu disclaims any proprietary interest in trademarks and trade names other than its own.

The information contained herein is provided to you "as is" without warranty of any kind including without limitation warranties as to its accuracy or completeness. Shimadzu does not assume any responsibility or liability for any damage, whether direct or indirect, relating to the use of this publication. This publication is based upon the information available to Shimadzu on or before the date of publication, and subject to change without notice.

➤ Please fill out the survey

Related Products

Some products may be updated to newer models.



Related Solutions

➤ Food and Nutrition

➤ 栄養・機能性成分

➤ Price Inquiry

➤ Product Inquiry

➤ Technical Service /
Support Inquiry

➤ Other Inquiry