

Gas Chromatograph HS-20 NX USTL/Brevis™ GC-2050

## Efficient Analysis of Residual Solvents in Pharmaceuticals Using the Compact Model, Brevis GC-2050 (2)

### —JP18 and USP467, Water Insoluble Samples—

Yui Higashi, Eisuke Kobayashi

#### User Benefits

- ◆ The slim and compact design of the Brevis GC-2050 enables the expansion of the number of operational units in the laboratory, allowing for efficient high-throughput analysis.
- ◆ Brevis GC-2050 can comply with the analysis methods of the pharmacopoeias.
- ◆ Analysis can be performed on *tert*-butyl alcohol and cyclopentyl methyl ether, which have been newly added as Class 2 solvents in ICH Q3C (R8).

#### Introduction

The methods of testing for residual solvents in pharmaceuticals are strictly prescribed in the Japanese Pharmacopoeia 18<sup>th</sup> Edition (JP18) and the United States Pharmacopeia (USP) General Chapters <467> Residual Solvents. In order to efficiently perform tests for residual solvents in pharmaceuticals under prescribed test methods, it is important to increase the number of instruments installed in laboratories, which often have limited space. The Brevis GC-2050 (Fig. 1) has a compact design, and compared with existing GC, the width of the system can be reduced by about 35%. In addition, headspace samplers with ultra-short transfer lines can be used to further increase the number of units in the lab and enhance analysis efficiency. This article introduces the results of analysis of Class 1 and 2 water-insoluble samples using the compact Brevis GC-2050, in accordance with Supplement 2 of the JP18. DMF was used as the solvent.

#### Analytical Conditions

Table 1 Analysis Conditions of Water-Insoluble Sample

GC Analytical Conditions (Procedure A and B)	
Model	: Brevis GC-2050
Detector	: FID (Flame Ionization Detector)
Column	: A) SH-I-624Sil MS (0.53 mm I.D. × 30m, d.f. = 3.0 μm) B) SH-PolarWax (0.32 mm I.D. × 30m, d.f. = 0.25 μm)
Column Temp.	: A) 40 °C (20 min) – 10 °C/min – 240 °C (20 min) Total 60 mins B) 50 °C (20 min) – 6 °C/min – 165 °C (20 min) Total 59.17 mins
Injection Mode	: A) Split 1:5 B) Split 1:10
Carrier Gas Controller	: Linear velocity (He, N <sub>2</sub> , H <sub>2</sub> )
Linear Velocity	: 35 cm/sec
Detector Temp.	: 250 °C
FID H <sub>2</sub> Flowrate	: 32 mL/min
FID Makeup Flowrate	: 24 mL/min (N <sub>2</sub> )
FID Air Flowrate	: 200 mL/min
Injection Volume	: 1 mL
HS-20 NX GC Analytical Conditions (Same for Procedure A and B)	
Model	: HS-20 NX USTL (Ultra Short Transfer Line)
Oven Temp.	: 80 °C
Sample Line Temp.	: 90 °C
Transfer Line Temp.	: 105 °C
Vial Shaking Level	: Off
Vial Volume	: 20 mL
Vial Equilibrating Time	: 45 min
Vial Pressurizing Time	: 1 min
Vial Pressure	: 68.9 kPa
Loading Time	: 0.5 min
Load Equilib. Time	: 0 min
Needle Flush Time	: 5 min



Fig. 1 HS-20 NX USTL (Ultra Short Transfer Line) + Brevis™ GC-2050

#### Class 1 Standard Solution Analysis (Water-Insoluble Samples)

Figs. 2 and 3 show the analysis results for the Class 1 standard solution.

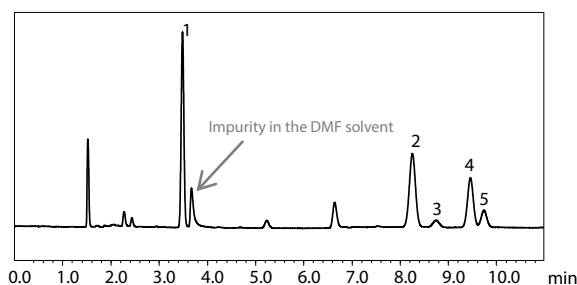


Fig. 2 Class 1 Standard Solution Chromatogram (Water-Insoluble Sample) Using Procedure A

1. 1,1-Dichloroethane, 2. 1,1,1-Trichloroethane,  
3. Carbon tetrachloride, 4. Benzene, 5. 1,2-Dichloroethane

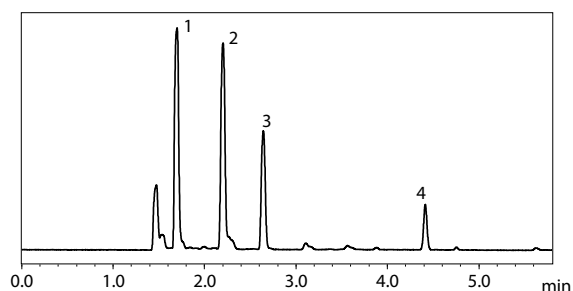


Fig. 3 Class 1 Standard Solution Chromatogram (Water-Insoluble Sample) Using Procedure B

1. 1,1-Dichloroethane, 2. 1,1,1-Trichloroethane+ Carbon tetrachloride,  
3. Benzene, 4. 1,2-Dichloroethane

## ■ Class 2 Standard Solution Analysis (Water-Insoluble Sample)

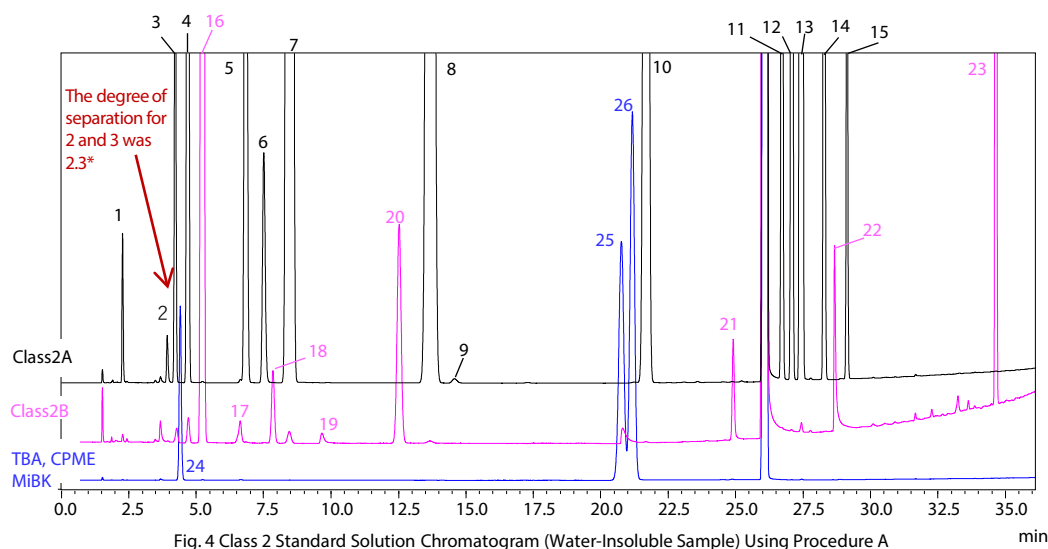
Fig. 4 shows the analysis results for Procedure A, and Fig. 5 shows the analysis results for Procedure B (Class 2A: black, Class 2B: pink, TBA, CPME, MiBK: blue). For system suitability, JP18 specifies that “the resolution between acetonitrile and methylene chloride in the Class 2 mixture A standard solution is not less than 1.0” when using Procedure A, and “the resolution between acetonitrile and *cis*-1,2-dichloroethene in the Class 2 mixture A standard solution is not less than 1.0” when using Procedure B. Satisfactory results were obtained with both procedures.

Note: The resolutions shown in the Figs. 4 and 5 are reference values and not guaranteed.

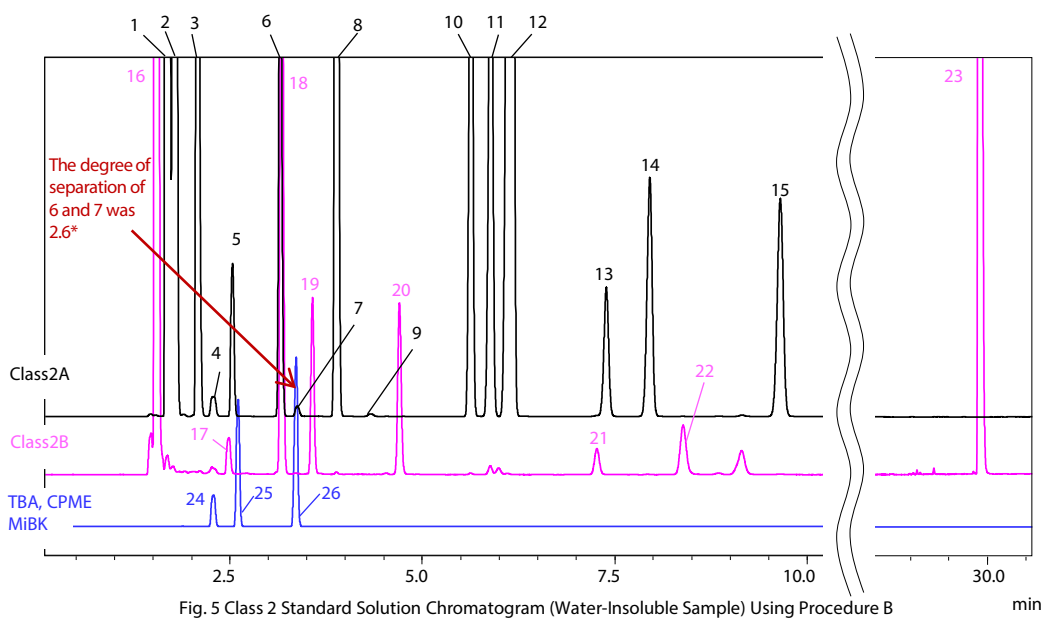
Note: A mixture of standard samples of *tert*-butyl alcohol (TBA), cyclopentyl methyl ether (CPME), and methyl isobutyl ketone (MiBK) was separately prepared to the prescribed concentration.

## ■ Conclusion

Even though the Brevis GC-2050 is small and compact it is capable of analyzing residual solvents in pharmaceuticals in accordance with the JP18 and USP General Chapters <467> Residual Solvents. That compactness means the number of units installed in a laboratory can be increased compared with high-end models, so residual solvents in pharmaceuticals can be efficiently analyzed.



- 1: Methanol
- 2: Acetonitrile
- 3: Methylene chloride (DCM)
- 4: *trans*-1,2-Dichloroethylene
- 5: *cis*-1,2-Dichloroethylene
- 6: Tetrahydrofuran
- 7: Cyclohexane
- 8: Methyl cyclohexane
- 9: 1,4-Dioxane
- 10: Toluene
- 11: Chlorobenzene
- 12: Ethylbenzene
- 13: *m,p*-Xylene
- 14: *o*-Xylene
- 15: Cumene
- 16: Hexane
- 17: Nitromethane
- 18: Chloroform
- 19: 1,2-Dimethoxyethane
- 20: Trichloroethene
- 21: Pyridine
- 22: Methyl butyl ketone
- 23: Tetraline
- 24: *tert*-Butyl alcohol (TBA)
- 25: Cyclopentyl methyl ether (CPME)
- 26: Methyl isobutyl ketone (MiBK)



- 1: Cyclohexane
- 2: Methyl cyclohexane
- 3: *trans*-1,2-Dichloroethene + Tetrahydrofuran
- 4: Methanol
- 5: Methylene chloride
- 6: *cis*-1,2-Dichloroethene
- 7: Acetonitrile
- 8: Toluene
- 9: 1,4-Dioxane
- 10: Ethylbenzene
- 11: *p*-Xylene
- 12: *m*-Xylene
- 13: Cumene
- 14: *o*-Xylene
- 15: Chlorobenzene
- 16: Hexane
- 17: 1,2-Dimethoxyethane
- 18: Trichloroethene
- 19: Chloroform
- 20: Methyl butyl ketone
- 21: Nitromethane
- 22: Pyridine
- 23: Tetraline
- 24: *tert*-Butyl alcohol (TBA)
- 25: Cyclopentyl methyl ether (CPME)
- 26: Methyl isobutyl ketone (MiBK)

Brevis is a trademark of Shimadzu Corporation in Japan and other countries.



Shimadzu Corporation

www.shimadzu.com/an/

For Research Use Only. Not for use in diagnostic procedures.

This publication may contain references to products that are not available in your country. Please contact us to check the availability of these products in your country.

The content of this publication shall not be reproduced, altered or sold for any commercial purpose without the written approval of Shimadzu. See <http://www.shimadzu.com/about/trademarks/index.html> for details.

Third party trademarks and trade names may be used in this publication to refer to either the entities or their products/services, whether or not they are used with trademark symbol “TM” or “®”.

Shimadzu disclaims any proprietary interest in trademarks and trade names other than its own.

The information contained herein is provided to you “as is” without warranty of any kind including without limitation warranties as to its accuracy or completeness. Shimadzu does not assume any responsibility or liability for any damage, whether direct or indirect, relating to the use of this publication. This publication is based upon the information available to Shimadzu on or before the date of publication, and subject to change without notice.

01-00517-EN

First Edition: Sep. 2023

## Related Products

Some products may be updated to newer models.



➤ **Brevis™ GC-2050**  
Gas Chromatograph



➤ **HS-20 NX series**  
Headspace Sampler



**SH Series**  
➤ **SH-PolarWax**

## Related Solutions

➤ Small Molecule  
Pharmaceutical

➤ Manufacturing,  
QA/QC

➤ Price Inquiry

➤ Product Inquiry

➤ Technical Service /  
Support Inquiry

➤ Other Inquiry