

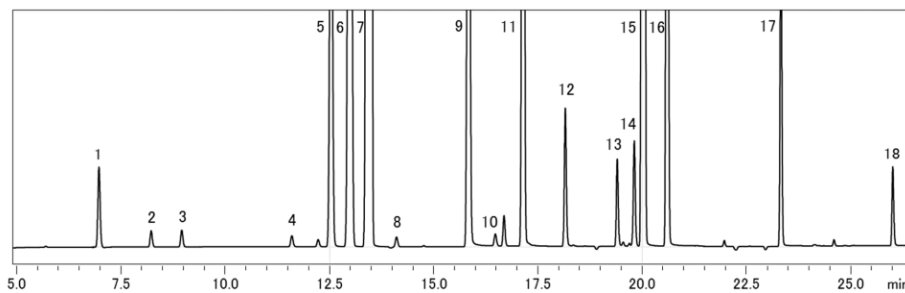
CoreFocus
Report
No.313

GC ECD HS SH Series

SH-I-624Sil MS

Analysis of VOC in Water

Keywords: Volatile Organic Compounds



1. 1,1-Dichloroethene
2. Dichloromethane
3. trans-1,2-Dichloroethylene
4. cis-1,2-Dichloroethylene
5. Chloroform
6. 1,1,1-Trichloroethane
7. Carbon tetrachloride
8. 1,2-Dichloroethane
9. Trichloroethylene
10. 1,1-Dichloropropane
11. Bromodichloromethane
12. cis-1,3-Dichloropropene
13. trans-1,3-Dichloropropene
14. 1,1,2-Trichloroethane
15. Tetrachloroethylene
16. Dibromochloromethane
17. Bromoform
18. p-Dichlorobenzene (10 µg/L)

Instruments and GC-2030 Conditions

GC Model	: Nexis™ GC-2030
Headspace Sampler	: HS-10
Detector	: ECD-2010 Exceed
Software	: LabSolutions™ GC
Column	: SH-I-624Sil MS (60 m x 0.32 mm I.D. df = 1.8 µm), P/N: 221-75963-60
Column Temp.	: 40 °C (5 min) - 4 °C/min - 80 °C(0 min) - 10 °C/min - 250 °C(3min)
Carrier Gas	: He, 35 cm/s (Constant Linear Velocity Mode)
Inj. Temp.	: 170 °C
Inj. Method	: Split (1:10)
Purge Flow	: 3.0 mL/min
Det. Temp.	: 300 °C

HS-10 Conditions

Oven Temp.	: 60 °C
Sample line Temp.	: 150 °C
Transfer line Temp.	: 160 °C
HSS Pressure Time	: 100 kPa
Vial shaking Time	: 60 min
Vial shaking equilibrium Time	: 0 min
Vial heating Time	: 0 min
Vial pressurizing Time	: 1.6 min
Pressurizing equilibrium time	: 0.1 min
Loading Time	: 0.2 min
Loading equilibrium Time	: 0.1 min
Injection Time	: 1 min
GC cycle Time	: 60 min

Source : Application News G293 ([JP](#), [ENG](#))

CoreFocus, Nexis and LabSolutions are trademarks of Shimadzu Corporation or its affiliated companies in Japan and/or other countries.

Shimadzu Corporation
www.shimadzu.com/an/

For Research Use Only. Not for use in diagnostic procedures.

This publication may contain references to products that are not available in your country. Please contact us to check the availability of these products in your country.

The content of this publication shall not be reproduced, altered or sold for any commercial purpose without the written approval of Shimadzu.

Company names, products/service names and logos used in this publication are trademarks and trade names of Shimadzu Corporation, its subsidiaries or its affiliates, whether or not they are used with trademark symbol "TM" or "®". Third-party trademarks and trade names may be used in this publication to refer to either the entities or their products/services, whether or not they are used with trademark symbol "TM" or "®". Shimadzu disclaims any proprietary interest in trademarks and trade names other than its own.

The information contained herein is provided to you "as is" without warranty of any kind including without limitation warranties as to its accuracy or completeness. Shimadzu does not assume any responsibility or liability for any damage, whether direct or indirect, relating to the use of this publication. This publication is based upon the information available to Shimadzu on or before the date of publication, and subject to change without notice.