

CoreFocus
Report
No.315

GC

FPD(P)

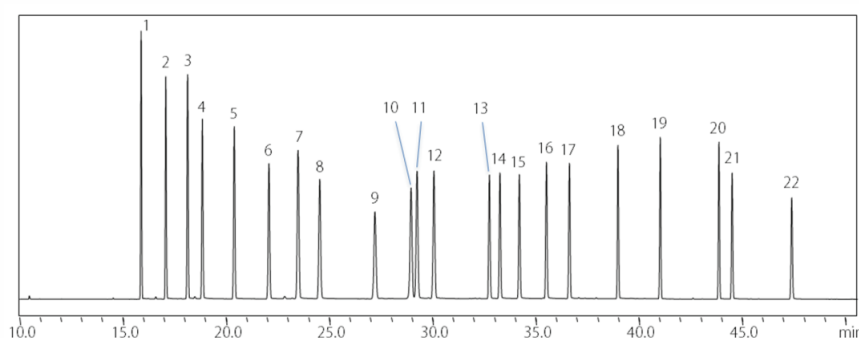
AOC

SH Series

SH-1701

Analysis of High-Concentration Organophosphorus pesticides

Keywords: Split injection, Organophosphorus pesticides



- 1.Ethoprophos
- 2.Phorate
- 3.Thiometon
- 4.Terbufos
- 5.Etrimfos
- 6.ECP (Dichlofenthion)
- 7.Dimethoate
- 8.Tolclofos-methyl
- 9.Chlorpyrifos
- 10.Formothion
- 11.MPP (Fenthion)
- 12.MEP (Fenitrothion)
- 13.Isofenphos
- 14.PAP (Phenthoate)
- 15.Prothiofos
- 16.DMTP (Mathidathion)
- 17.Butamifos
- 18.Sulprofos
- 19.Fensulfothion
- 20.EPN
- 21.PMP (Phosmet)
- 22.Pyraclofos
(20 mg/L each)

GC Model	: Nexis™ GC-2030
Detector	: FPD-2030 (P-mode)
Column	: SH-1701 (30 m x 0.25 mm I.D. df = 0.25 μm), P/N: 221-75777-30
Column Temperature	: 60 °C (2 min) - 25 °C/min - 150 °C (0 min) - 5 °C/min - 200 °C (12min) - 5°C/min - 280 °C (7 min) Total 50.6 min
Injection Mode	: Split 1:20
Carrier Gas Controller	: Constant Linear Velocity (He)
Linear Velocity	: 30 cm/s
Injection Temperature	: 250 °C
Detector Temperature	: 275 °C
Injection Volume	: 1 μL

Source : Application News G294 ([JP](#), [ENG](#))

CoreFocus and Nexis are trademarks of Shimadzu Corporation or its affiliated companies in Japan and/or other countries.

Shimadzu Corporation
www.shimadzu.com/an/

For Research Use Only. Not for use in diagnostic procedures.

This publication may contain references to products that are not available in your country. Please contact us to check the availability of these products in your country.

The content of this publication shall not be reproduced, altered or sold for any commercial purpose without the written approval of Shimadzu.

Company names, products/service names and logos used in this publication are trademarks and trade names of Shimadzu Corporation, its subsidiaries or its affiliates, whether or not they are used with trademark symbol "TM" or "®". Third-party trademarks and trade names may be used in this publication to refer to either the entities or their products/services, whether or not they are used with trademark symbol "TM" or "®".

Shimadzu disclaims any proprietary interest in trademarks and trade names other than its own.

The information contained herein is provided to you "as is" without warranty of any kind including without limitation warranties as to its accuracy or completeness. Shimadzu does not assume any responsibility or liability for any damage, whether direct or indirect, relating to the use of this publication. This publication is based upon the information available to Shimadzu on or before the date of publication, and subject to change without notice.

➤ Please fill out the survey

Related Products

Some products may be updated to newer models.

HPLC Column Solutions - Reversed phase and Normal phase -
Shim-pack

➤ SH-1701

Related Solutions

➤ Soil

➤ 土壤

➤ Price Inquiry

➤ Product Inquiry

➤ Technical Service /
Support Inquiry

➤ Other Inquiry