

CoreFocus
Report
No.322

GC

SCD

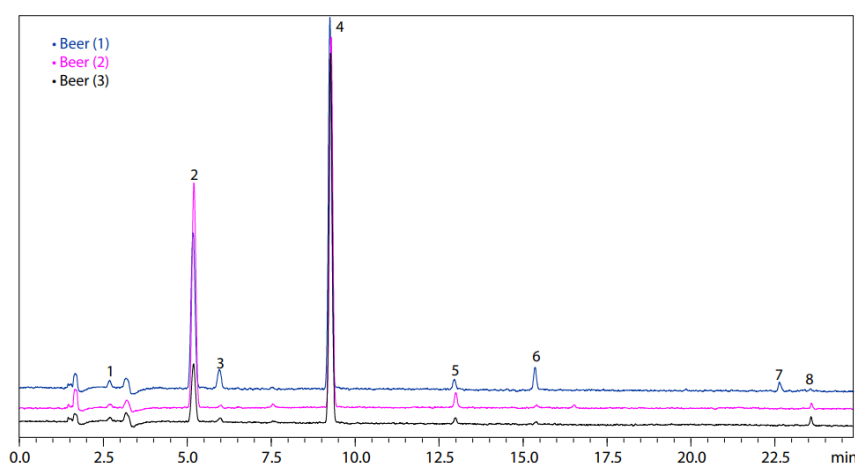
HS

SH Series

SH-I-1MS

Analysis of Volatile Sulfur Compounds in Beer

Keywords: Beer, Volatile sulfur compounds, Sulfide, Thiol



1. Methanethiol (Methyl Mercaptan)
2. Dimethyl Sulfide (DMS)
3. Carbon Disulfide
4. Ethyl Methyl Sulfide [Internal Standard]
5. S-Methyl Thioacetate
6. Dimethyl Disulfide (DMDS)
7. Diethyl Disulfide
8. Dimethyl Trisulfide

Model : Nexis™ GC-2030/SCD-2030/HS-20

GC-2030

Injection Mode : Split
Split Ratio : 1:5
Carrier gas control : Constant Linear Velocity (45 cm/s)
Column : SH-I-1MS (30 m x 0.32 mm I.D. df = 4.0 μm), P/N: 227-36011-01
Column Temp. : 35 °C(5 min) - 5 °C/min - 100 °C(0 min) - 10 °C /min - 230 °C (5 min)

SCD-2030

Interface Temp : 200 °C
Electric Furnace Temp. : 850 °C
Detector Gas : H₂ 80.0 mL/min
N₂ 40.0 mL/min
O₂ 10.0 mL/min
O₃ 25.0 mL/min

HS-20

Mode : Loop
Oven Temp. : 45 °C
Sample Line Temp. : 95 °C
Transfer Line Temp. : 95 °C
Vial Pressure : 150 kPa
Vial Heat-retention Time : 40 min
Vial Pressurization Time : 1 min
Vial Pressurization Equilibrating Time : 0.1 min
Loading Time : 1 min
Loading Pressurization Time : 0.1 min
Injection Time : 1 min
Needle Flush Time : 5 min

Source : Application News G304 ([JP](#), [ENG](#))

CoreFocus and Nexis are trademarks of Shimadzu Corporation or its affiliated companies in Japan and/or other countries.

Shimadzu Corporation
www.shimadzu.com/an/

For Research Use Only. Not for use in diagnostic procedures.

This publication may contain references to products that are not available in your country. Please contact us to check the availability of these products in your country.

The content of this publication shall not be reproduced, altered or sold for any commercial purpose without the written approval of Shimadzu.

Company names, products/service names and logos used in this publication are trademarks and trade names of Shimadzu Corporation, its subsidiaries or its affiliates, whether or not they are used with trademark symbol "TM" or "®". Third-party trademarks and trade names may be used in this publication to refer to either the entities or their products/services, whether or not they are used with trademark symbol "TM" or "®".

Shimadzu disclaims any proprietary interest in trademarks and trade names other than its own.

The information contained herein is provided to you "as is" without warranty of any kind including without limitation warranties as to its accuracy or completeness. Shimadzu does not assume any responsibility or liability for any damage, whether direct or indirect, relating to the use of this publication. This publication is based upon the information available to Shimadzu on or before the date of publication, and subject to change without notice.

➤ Please fill out the survey

Related Products

Some products may be updated to newer models.

HPLC Column Solutions – Reversed phase and Normal phase –
Shim-pack

➤ SH-I-1MS

Related Solutions

➤ Flavor Analysis

➤ におい、香り分析

➤ Price Inquiry

➤ Product Inquiry

➤ Technical Service /
Support Inquiry

➤ Other Inquiry