

CoreFocus
Report
No.323

GC

SCD

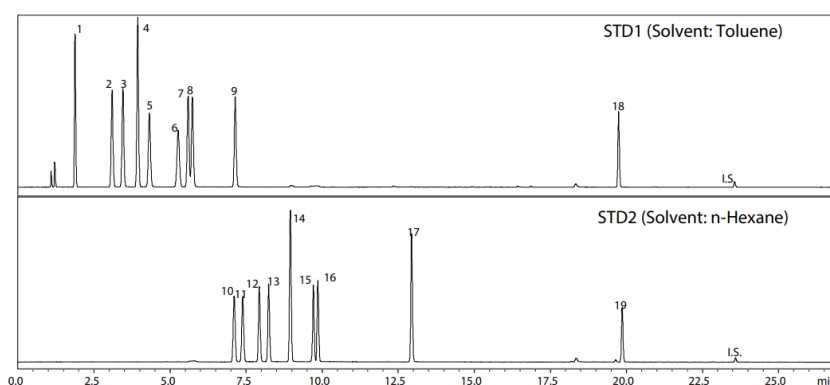
AOC

SH Series

SH-I-1MS

**Analysis of Sulfur Compounds
Recommended by ASTM D5623**

Keywords: ASTM D5623, Sulfur compounds, Light petroleum liquid



- | | | |
|----------------------------|-----------------------------|----------------------------|
| 1. Methyl mercaptan | 8. Ethyl methyl sulfide | 15. 2-Methylthiophene |
| 2. Ethyl mercaptan | 9. Thiophene | 16. 3-Methylthiophene |
| 3. Dimethyl sulfide | 10. 2-Butanethiol | 17. Diethyl disulfide |
| 4. Carbon disulfide | 11. 2-Methyl-1-propanethiol | 18. 5-Methylbenzothiophene |
| 5. 2-Propanethiol | 12. Diethyl sulfide | 19. 3-Methylbenzothiophene |
| 6. 2-Methyl-2-propanethiol | 13. 1-Butanethiol | (10 ppm each) |
| 7. 1-Propanethiol | 14. Methyl disulfide | |

Main Unit	: Nexis™ GC-2030/AOC-20i plus with SPL-2030 (P/N: 221-77100-61/-64)	Carrier Gas	: He
Column	: SH-I-1MS (30 m x 0.32 mm I.D. df = 4.0 μm), P/N: 227-36011-01	Carrier Gas Control	: Constant Column Flow Mode (2.8 mL/min)
Detector	: SCD-2030	Column Temp.	: 40 °C(3 min) - 10 °C/min - 250 °C (16 min)
Injection Volume	: 1 μL	Interface Temp.	: 200 °C
Injection Mode	: Split	Furnace Temp.	: 850 °C
Split Ratio	: 1:9	Detector Gas	: H ₂ 100 mL/min, N ₂ 10 mL/min O ₂ 12 mL/min, O ₃ 25 mL/min
Injection Unit Temp.	: 275 °C		

Source : Application News G305 ([JP](#), [ENG](#))

CoreFocus and Nexis are trademarks of Shimadzu Corporation or its affiliated companies in Japan and/or other countries.

Shimadzu Corporation
www.shimadzu.com/an/

For Research Use Only. Not for use in diagnostic procedures.

This publication may contain references to products that are not available in your country. Please contact us to check the availability of these products in your country.

The content of this publication shall not be reproduced, altered or sold for any commercial purpose without the written approval of Shimadzu.

Company names, products/service names and logos used in this publication are trademarks and trade names of Shimadzu Corporation, its subsidiaries or its affiliates, whether or not they are used with trademark symbol "TM" or "®". Third-party trademarks and trade names may be used in this publication to refer to either the entities or their products/services, whether or not they are used with trademark symbol "TM" or "®".

Shimadzu disclaims any proprietary interest in trademarks and trade names other than its own.

The information contained herein is provided to you "as is" without warranty of any kind including without limitation warranties as to its accuracy or completeness. Shimadzu does not assume any responsibility or liability for any damage, whether direct or indirect, relating to the use of this publication. This publication is based upon the information available to Shimadzu on or before the date of publication, and subject to change without notice.

➤ Please fill out the survey

Related Products

Some products may be updated to newer models.

HPLC Column Solutions - Reversed phase and Normal phase -
Shim-pack

➤ SH-I-1MS

Related Solutions

Hydrocarbon
➤ Processing Industry
(Petrochemical, Ch

➤ 石油・石油系化学物
質

➤ Price Inquiry

➤ Product Inquiry

➤ Technical Service /
Support Inquiry

➤ Other Inquiry