

**CoreFocus**  
**Report**  
**No.348**

GC

FID

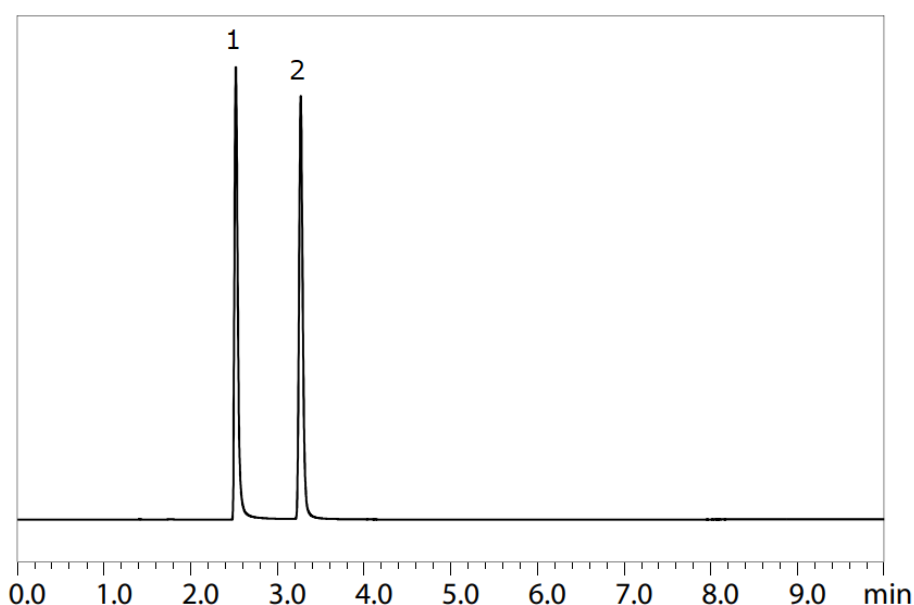
AOC

SH Series

**SH-624**

**Alcohol Determination of Sanitizer Gel in  
accordance with USP<611>**

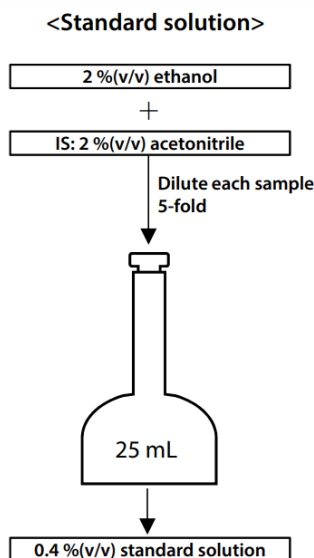
**Keywords: ethanol, split glass insert**



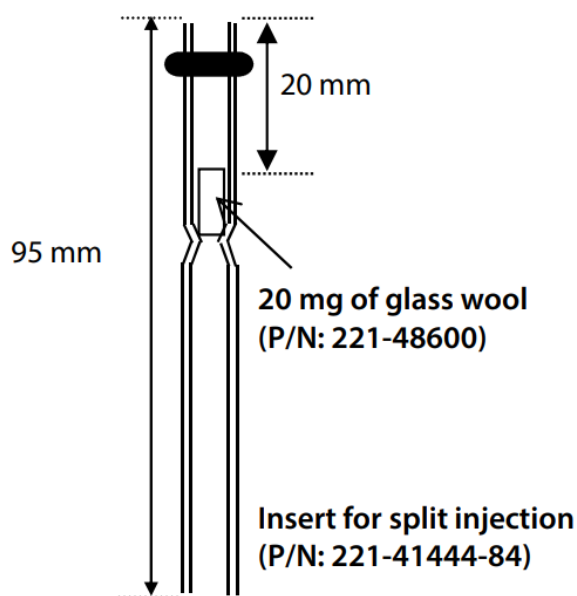
1. Ethanol  
2. Acetonitrile (IS)

Model	: Nexis™ GC-2030 + AOC-20i Plus
Detector	: FID-2030 Flame Ionization Detector
Column	: SH-624 (30 m x 0.53 mm I.D. df = 3 μm), P/N: 221-76158-30
Column Temperature	: 50 °C (5 min) - 10 °C/min - 200 °C (4 min) Total 24 min
Injection Temperature	: 210 °C
Injection Mode	: Split
Split Ratio	: 1:5
Carrier Gas Controller	: Linear Velocity (He)
Linear Velocity	: 34 cm/s
Detector Temperature	: 280 °C
FID H <sub>2</sub> Flow Rate	: 32 mL/min
FID Make up Flow Rate	: 24 mL/min (He)
FID Air Flow Rate	: 200 mL/min
Sample Injection Volume	: 0.2 μL
Syringe	: Elastic Syringe, AOC, P/N: 221-49548*

\* When samples in aqueous solution are analyzed with a standard syringe for AOC-20i Plus, the plunger motion may become dull during analysis, which affects repeatability. Using an elastic syringe for AOC (P/N: 221-49548) equipped with a plunger made of titanium enables stable sample introduction.



Sample Preparation Method



Position and Quantity of Wool in the Insert

Source : Application News G333 ([JP](#), [ENG](#))

CoreFocus and Nexis are trademarks of Shimadzu Corporation or its affiliated companies in Japan and/or other countries.

**Shimadzu Corporation**  
[www.shimadzu.com/an/](http://www.shimadzu.com/an/)

**For Research Use Only. Not for use in diagnostic procedures.**

This publication may contain references to products that are not available in your country. Please contact us to check the availability of these products in your country.

The content of this publication shall not be reproduced, altered or sold for any commercial purpose without the written approval of Shimadzu.

Company names, products/service names and logos used in this publication are trademarks and trade names of Shimadzu Corporation, its subsidiaries or its affiliates, whether or not they are used with trademark symbol "TM" or "®". Third-party trademarks and trade names may be used in this publication to refer to either the entities or their products/services, whether or not they are used with trademark symbol "TM" or "®".

Shimadzu disclaims any proprietary interest in trademarks and trade names other than its own.

The information contained herein is provided to you "as is" without warranty of any kind including without limitation warranties as to its accuracy or completeness. Shimadzu does not assume any responsibility or liability for any damage, whether direct or indirect, relating to the use of this publication. This publication is based upon the information available to Shimadzu on or before the date of publication, and subject to change without notice.

➤ Please fill out the survey

## Related Products

Some products may be updated to newer models.

HPLC Column Solutions - Reversed phase and Normal phase -  
**Shim-pack**

➤ SH-624

## Related Solutions

Cosmetics &  
➤ Personal Care  
Products

➤ 化粧品・パーソナル  
ケア

➤ Price Inquiry

➤ Product Inquiry

➤ Technical Service /  
Support Inquiry

➤ Other Inquiry