

**CoreFocus**  
**Report**  
**No.363**

GC

FID

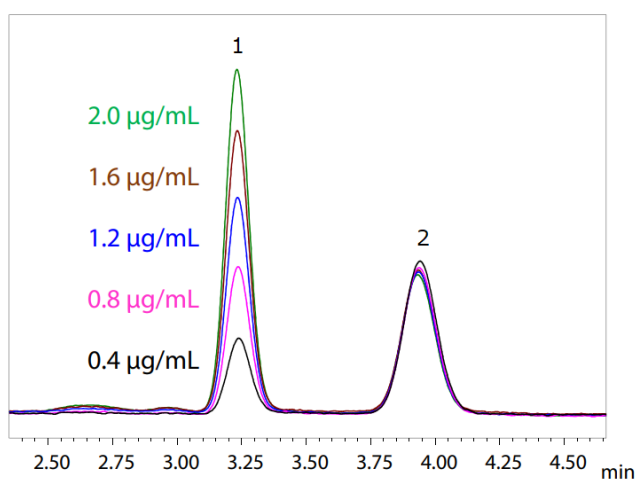
HS

SH Series

**SH-PolarWax**

**Analysis of Residual Ethylene Oxide in Medical Devices**

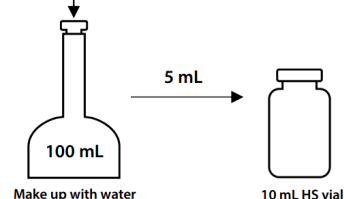
**Keywords: EOG sterilization**



1. Ethylene oxide (EO)
2. Propylene oxide (PO), Internal standard

**<Standards>**

100 µg/mL EO solution: 400 - 2000 µL  
+  
100 µg/mL PO solution (IS): 500 µL



Sample Preparation Method for Standards

Model	: Nexis™ GC-2030
Detector	: FID-2030 Flame Ionization Detector
Headspace Smapler	: HS-20
Analytical Column	: SH-PolarWax (30 m x 0.53 mm I.D. df = 2.00 µm), P/N: 227-36258-01
Column Temp.	: 40 °C (5 min) - 30 °C/min - 200 °C (20 min) Total 30.33 min
Injection Mode	: Split
Split Ratio	: 1:20
Carrier Gas Controller	: Constant Linear Velocity
Linear Velocity	: 30 cm/s (N <sub>2</sub> )
Detector Temp.	: 250 °C
Detector Gas	: H <sub>2</sub> 32 mL/min, Air 200 mL/min
Makeup Gas	: N <sub>2</sub> 24 mL/min
Injection Volume	: 1 µL

**<HS>**

Oven Temp.	: 70 °C
Sample Line Temp.	: 75 °C
Transfer Line Temp.	: 75 °C
Vial Volume	: 10 mL
Vial Shaking Level	: 3
Vial Equilibrating Time	: 30 min
Vial Pressurization Time	: 1 min
Vial Pressure	: 100 kPa
Loading Time	: 1 min
Needle Flush Time	: 8 min

Source : Application News 01-00140 ([JP](#), [ENG](#))

CoreFocus and Nexis are trademarks of Shimadzu Corporation or its affiliated companies in Japan and/or other countries.

**Shimadzu Corporation**  
**www.shimadzu.com/an/**

**For Research Use Only. Not for use in diagnostic procedures.**

This publication may contain references to products that are not available in your country. Please contact us to check the availability of these products in your country.

The content of this publication shall not be reproduced, altered or sold for any commercial purpose without the written approval of Shimadzu.

Company names, products/service names and logos used in this publication are trademarks and trade names of Shimadzu Corporation, its subsidiaries or its affiliates, whether or not they are used with trademark symbol "TM" or "®". Third-party trademarks and trade names may be used in this publication to refer to either the entities or their products/services, whether or not they are used with trademark symbol "TM" or "®".

Shimadzu disclaims any proprietary interest in trademarks and trade names other than its own.

The information contained herein is provided to you "as is" without warranty of any kind including without limitation warranties as to its accuracy or completeness. Shimadzu does not assume any responsibility or liability for any damage, whether direct or indirect, relating to the use of this publication. This publication is based upon the information available to Shimadzu on or before the date of publication, and subject to change without notice.

➤ Please fill out the survey

## Related Products

Some products may be updated to newer models.

HPLC Column Solutions - Reversed phase and Normal phase -  
**Shim-pack**

➤ SH-PolarWax

## Related Solutions

➤ Clinical Research

➤ 臨床研究

➤ Price Inquiry

➤ Product Inquiry

➤ Technical Service /  
Support Inquiry

➤ Other Inquiry