

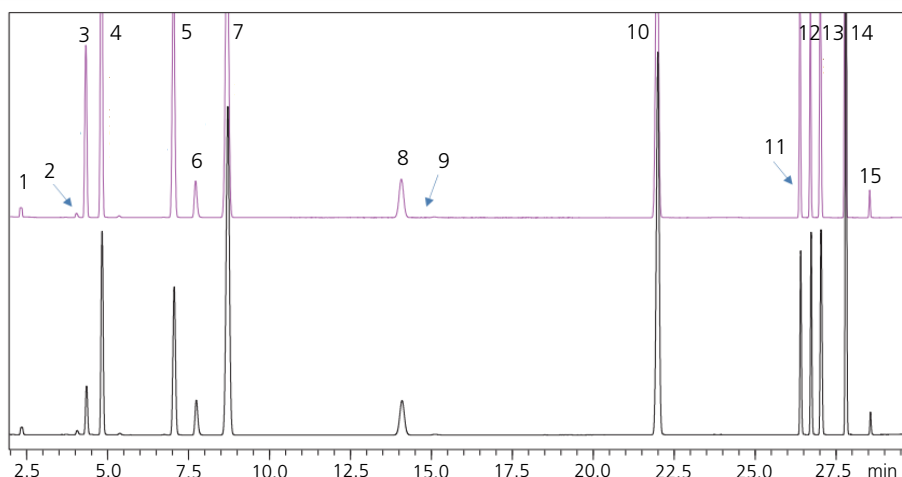
**CoreFocus**  
**Report**  
**No.383**

GCMS FID HS SH Series

**SH-I-624Si MS**

**Analysis of Residual Solvents in Pharmaceuticals**

**Keywords: Headspace**



1. Methanol
2. Acetonitrile
3. Methylene Chloride
4. *trans*-1,2-Dichloroethene
5. *cis*-1,2-Dichloroethene
6. Tetrahydrofuran
7. Cyclohexane
8. Methylcyclohexane
9. 1,4-Dioxane
10. Toluene
11. Chlorobenzene
12. Ethylbenzene
13. *m,p*-Xylene
14. *o*-Xylene
15. Cumene

Model : GCMS-QP™2020/HS-20/FID-2010 Plus  
Splitting System

**HS**

Mode : Loop (volume 1 mL)  
Oven temp. : 80 °C  
Sample line temp. : 90 °C  
Transfer line temp. : 105 °C  
Gas pressure : 76.4 kPa  
for vial pressurization  
Vial equilibrating time : 45 min  
Vial pressurizing time : 2.0 min  
Pressure equilibrating time : 0.1 min  
Load time : 0.5 min  
Load equilibrating time : 0.1 min  
Injection time : 0.5 min  
Needle flushing time : 15.0 min  
APC pressure : 20 kPa

**GC**

Column : SH-I-624Si MS (30 m x 0.32 mm I.D., 1.8 µm)  
P/N : 227-36077-01  
Injection mode : Split (Split ratio 1:5)  
Control mode : Constant pressure (89.4 kPa)  
Carrier gas : He  
Oven temp. : 40 °C (20 min) - 10 °C/min - 240 °C (20 min)  
Restrictor (FID) : 1.1 m x 0.25 mm  
Restrictor (MS) : 1.5 m x 0.20 mm  
APC pressure : 20 kPa

**FID**

Temp. : 250 °C  
Make-up flow rate : 30 mL/min (He)  
Hydrogen flow rate : 40 mL/min  
Air flow rate : 400 mL/min

**MS**

Ion source temp. : 200 °C  
Interface temp. : 250 °C  
SCAN range : *m/z* 29 to 250  
Event time : 0.3 s

Source : Application News M272 ([JP](#), [ENG](#))

CoreFocus and GCMS-QP are trademarks of Shimadzu Corporation or its affiliated companies in Japan and/or other countries.

**Shimadzu Corporation**

[www.shimadzu.com/an/](http://www.shimadzu.com/an/)

**For Research Use Only. Not for use in diagnostic procedures.**

This publication may contain references to products that are not available in your country. Please contact us to check the availability of these products in your country.

The content of this publication shall not be reproduced, altered or sold for any commercial purpose without the written approval of Shimadzu.

Company names, products/service names and logos used in this publication are trademarks and trade names of Shimadzu Corporation, its subsidiaries or its affiliates, whether or not they are used with trademark symbol "TM" or "®". Third-party trademarks and trade names may be used in this publication to refer to either the entities or their products/services, whether or not they are used with trademark symbol "TM" or "®".

Shimadzu disclaims any proprietary interest in trademarks and trade names other than its own.

The information contained herein is provided to you "as is" without warranty of any kind including without limitation warranties as to its accuracy or completeness. Shimadzu does not assume any responsibility or liability for any damage, whether direct or indirect, relating to the use of this publication. This publication is based upon the information available to Shimadzu on or before the date of publication, and subject to change without notice.

➤ Please fill out the survey

## Related Products

Some products may be updated to newer models.

HPLC Column Solutions - Reversed phase and Normal phase -  
**Shim-pack**

➤ SH-I-624SiI MS

## Related Solutions

➤ Small Molecule  
Pharmaceutical

➤ 低分子医薬品

➤ Price Inquiry

➤ Product Inquiry

➤ Technical Service /  
Support Inquiry

➤ Other Inquiry