

CoreFocus
Report
No.386

GCMS

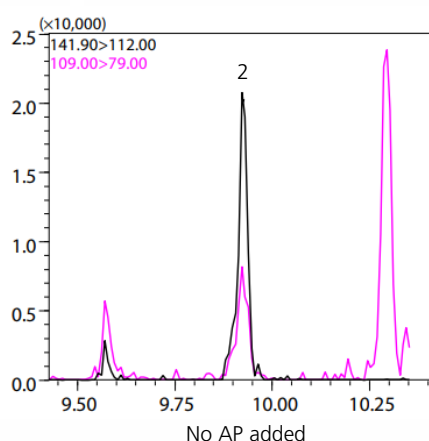
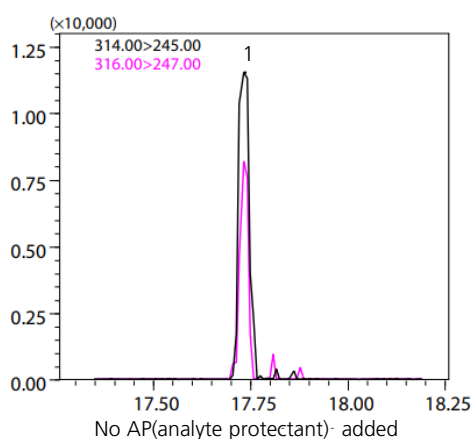
AOC

SH Series

SH-I-5Sil MS/SH-I Guard column

Study of a Method for Coping with Matrix Effects in Pesticide Residue Analysis

Keywords: Pseudo-Matrix



1. Iprodione
2. Demeton-S-methyl (5ppb each)

Instrument Used

GCMS : GCMS-TQ™ 8050
Autosampler : AOC-20i+s
Column : SH-I-5Sil MS (30 m x 0.25 mm I.D., 0.25 µm)
P/N : 221-76127-30
Pre-column : SH-I Guard column (1.5 m x 0.25 mm I.D.)
*P/N : 227-36303-01
Insert liner : Topaz®liner, splitless single taper w/wool

GC Conditions (AP added)

Vaporizing chamber temp. : 250 °C
Injection volume : 2 µL
Injection mode : Splitless
Carrier gas control : Linear speed (44.1 cm/s)
Column oven temp. : 105 °C (3 min) - (10 °C /min) - 130 °C - (4 °C /min) - 200 °C - (8 °C /min) - 290 °C (6 min)

GC Conditions (PEG added)

Vaporizing chamber temp. : 250 °C
Injection volume : 2 µL
Injection mode : Splitless
Carrier gas control : Linear speed (47.2 cm/s)
Column oven temp. : 50 °C (1 min) - (25 °C /min) - 125 °C - (10 °C /min) - 300 °C (15 min)

MS Conditions

Interface temp. : 250 °C
Ion source temp. : 230 °C
Ionization method : EI
Measurement mode : MRM
Event time : 0.3 s
Loop time : 0.5 s

*P/N : 227-36303-01 (5 m, 0.25mm ID) was cut to 1.5m and used it in 1.5m.

Source : Application News M279 ([JP](#), [ENG](#))

CoreFocus and GCMS-TQ are trademarks of Shimadzu Corporation or its affiliated companies in Japan and/or other countries.
Topaz is either a trademark or a registered trademark of Restek Corporation in the United States and/or other countries.

Shimadzu Corporation

www.shimadzu.com/an/

For Research Use Only. Not for use in diagnostic procedures.

This publication may contain references to products that are not available in your country. Please contact us to check the availability of these products in your country.

The content of this publication shall not be reproduced, altered or sold for any commercial purpose without the written approval of Shimadzu.

Company names, products/service names and logos used in this publication are trademarks and trade names of Shimadzu Corporation, its subsidiaries or its affiliates, whether or not they are used with trademark symbol "TM" or "®". Third-party trademarks and trade names may be used in this publication to refer to either the entities or their products/services, whether or not they are used with trademark symbol "TM" or "®".

Shimadzu disclaims any proprietary interest in trademarks and trade names other than its own.

The information contained herein is provided to you "as is" without warranty of any kind including without limitation warranties as to its accuracy or completeness. Shimadzu does not assume any responsibility or liability for any damage, whether direct or indirect, relating to the use of this publication. This publication is based upon the information available to Shimadzu on or before the date of publication, and subject to change without notice.

➤ Please fill out the survey

Related Products

Some products may be updated to newer models.

HPLC Column Solutions – Reversed phase and Normal phase –
Shim-pack

➤ SH-I-5SiI MS

HPLC Column Solutions – Reversed phase and Normal phase –
Shim-pack

➤ SH-I Guard
Retention Gap
Columns

Related Solutions

➤ Residual Pesticides

➤ 残留農薬分析

➤ Price Inquiry

➤ Product Inquiry

➤ Technical Service /
Support Inquiry

➤ Other Inquiry