

CoreFocus
Report
No.387

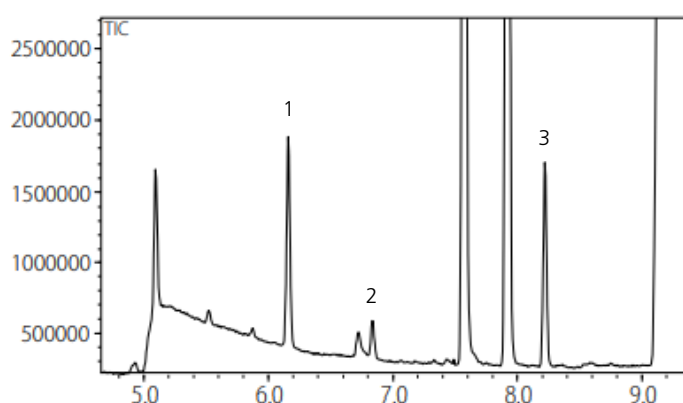
GCMS

SH Series

SH-I-1MS

Analysis of Alkylmercury Compounds

Keywords: wastewater



1. Phenyl methyl mercury
(10 µg(HG)/L)
2. 2,4,6-Trichloroanisole-d3
(2 µg/L)
3. Phenyl ethyl mercury
(10 µg(HG)/L)

Model : GCMS-QP™2020 NX
Column : SH-I-1MS (30 m x 0.25 mm I.D., 0.25 µm)
P/N : 221-75923-30
Glass insert : Topaz®3.5 mm I.D.
Single taper inlet liner w/wool
Code No. 23336, Restek Corporation

GC

Inlet temp. : 280 °C
Injection mode : Splitless
Sampling time : 1 min
Carrier gas : He
Control mode : Constant linear velocity (40 cm/s)
High-pressure inj. : 250 kPa (1.5 min)
Column oven temp. : 90 °C (1 min) - (8 °C /min) - 220 °C
- (30 °C/min) - 280 °C (3 min)
Injection volume : 1 µL

MS

Ionization method : EI
Ion source temp. : 230 °C
Interface temp. : 280 °C
Measurement mode : Scan
Event time (scan) : 0.3 s
Mass range (m/z) : 35 -400
Measurement mode : SIM
Event time (SIM) : 0.3 s
Monitor ions (m/z) : Phenyl methyl mercury 294, 292
Phenyl ethyl mercury 308, 306
2,4,6-Trichloroanisole-d3 215, 213

Source : Application News M281 ([JP](#))

CoreFocus and GCMS-QP are trademarks of Shimadzu Corporation or its affiliated companies in Japan and/or other countries.
Topaz is either a trademark or a registered trademark of Restek Corporation in the United States and/or other countries.

Shimadzu Corporation
www.shimadzu.com/an/

For Research Use Only. Not for use in diagnostic procedures.

This publication may contain references to products that are not available in your country. Please contact us to check the availability of these products in your country.

The content of this publication shall not be reproduced, altered or sold for any commercial purpose without the written approval of Shimadzu.

Company names, products/service names and logos used in this publication are trademarks and trade names of Shimadzu Corporation, its subsidiaries or its affiliates, whether or not they are used with trademark symbol "TM" or "®".
Third-party trademarks and trade names may be used in this publication to refer to either the entities or their products/services, whether or not they are used with trademark symbol "TM" or "®".

Shimadzu disclaims any proprietary interest in trademarks and trade names other than its own.

The information contained herein is provided to you "as is" without warranty of any kind including without limitation warranties as to its accuracy or completeness. Shimadzu does not assume any responsibility or liability for any damage, whether direct or indirect, relating to the use of this publication. This publication is based upon the information available to Shimadzu on or before the date of publication, and subject to change without notice.

➤ Please fill out the survey

Related Products

Some products may be updated to newer models.

HPLC Column Solutions – Reversed phase and Normal phase –
Shim-pack

➤ SH-I-1MS

Related Solutions

➤ Water

➤ 水

➤ Price Inquiry

➤ Product Inquiry

➤ Technical Service /
Support Inquiry

➤ Other Inquiry