

CoreFocus
Report
No.388

GCMS

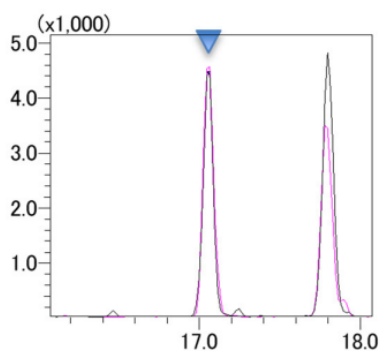
HS

SH Series

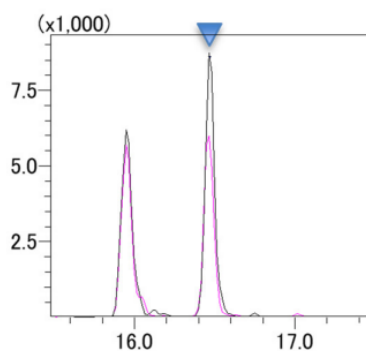
SH-I-5Sil MS

Analysis of Dioxins in Foods and Feeds

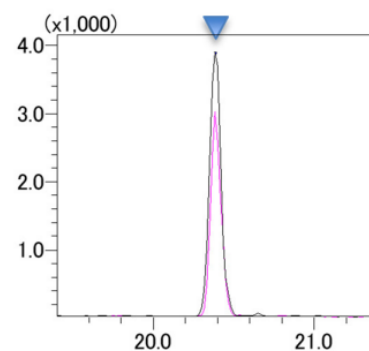
Keywords: Persistent organic pollutants, POPs



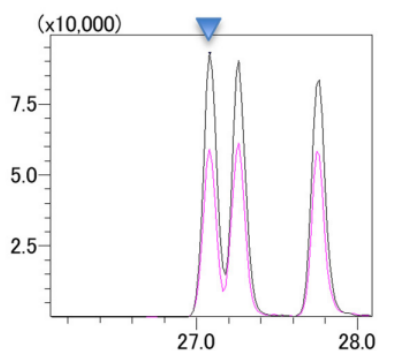
2,3,7,8-Tetrachlorodibenzo-p-dioxin



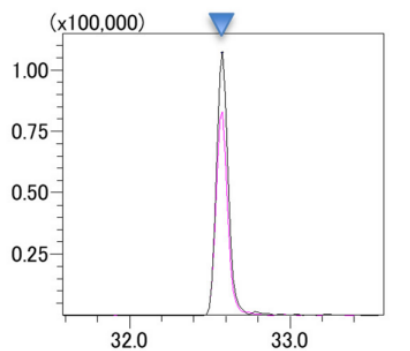
2,3,7,8-Tetrachlorodibenzofuran



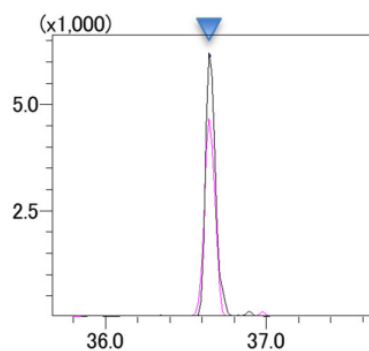
1,2,3,7,8-Pentachlorodibenzofuran



1,2,3,4,7,8-Hexachlorodibenzo-p-dioxin



1,2,3,4,6,7,8-Heptachlorodibenzo-p-dioxin



Octachlorodibenzofuran

Chromatograms of Representative Compounds in Analysis of Standard Samples (Concentration: 0.025 pg/ μ L)

Instrument Composition

Sample preparation (extraction)	:	SpeedExtractor (BÜCHI Labortechnik AG)
Sample preparation (clean-up)	:	GO-xHT (Miura Co., Ltd.)
Auto sampler	:	AOC-20i/s
GC-MS/MS	:	GCMS-TQ™8050
Software	:	GCMSsolution™ Ver. 4.50SP1 LabSolutions Insight™ Ver. 3.6 EU Regulation Compliant GC-MS/MS Method Package for Dioxins in Foods

Detailed Analysis Conditions (AOC-20i/s)

# of rinses with solvent (pre-run)	:	3
# of rinses with solvent (post-run)	:	3
# of rinses with sample	:	0
Plunger speed (suction)	:	Low
Viscosity comp. time	:	0.2 s
Plunger speed (injection)	:	High
Syringe insertion speed	:	High
Pumping times	:	5
Inj. port dwell time	:	0.3 s
Terminal air gap	:	No
Plunger washing speed	:	High
Washing volume	:	6 µL
Injection volume	:	2 µL

Detailed Analysis Conditions (GC)

Inlet liner	:	Topaz®single gooseneck inlet liner, w/wool (Restek Corp., P/N : 23336)
Column	:	SH-I -5Sil MS (60 m x 0.25 mm I.D., 0.25 µm) P/N : 227-36036-02
Injection mode	:	Spiltless
Sampling time	:	1.00 min
Injection temp.	:	280 °C
Column oven temp.	:	150 °C (1min) - (20 °C/min) - 220 °C - (2 °C/min) - 260 °C (3 min) - (5 °C /min) - 320 °C (3.5 min)
High pressure injection	:	450 kPa (1.5 min)
Flow control mode	:	Linear velocity (45.6 cm/s)
Purge flow	:	20 mL/min
Carrier gas	:	Helium

Analysis Conditions (MS)

Ion source temp.	:	230 °C
Interface temp.	:	300 °C
Detector voltage	:	1.8 kV (absolute)
Loop time	:	0.8 s (for native compounds) 0.2 s (for labeled compounds)
Transition	:	Conditions of method package
Ion source	:	BEIS
Emission current	:	150 µA

Source : Application News M287 [\(ENG\)](#)

CoreFocus, GCMS-TQ, GCMSsolution and LabSolutions Insight are trademarks of Shimadzu Corporation or its affiliated companies in Japan and/or other countries.
Topaz is either a trademark or a registered trademark of Restek Corporation in the United States and/or other countries.

Shimadzu Corporation

www.shimadzu.com/an/

For Research Use Only. Not for use in diagnostic procedures.

This publication may contain references to products that are not available in your country. Please contact us to check the availability of these products in your country.

The content of this publication shall not be reproduced, altered or sold for any commercial purpose without the written approval of Shimadzu.

Company names, products/service names and logos used in this publication are trademarks and trade names of Shimadzu Corporation, its subsidiaries or its affiliates, whether or not they are used with trademark symbol "TM" or "®".
Third-party trademarks and trade names may be used in this publication to refer to either the entities or their products/services, whether or not they are used with trademark symbol "TM" or "®".

Shimadzu disclaims any proprietary interest in trademarks and trade names other than its own.

The information contained herein is provided to you "as is" without warranty of any kind including without limitation warranties as to its accuracy or completeness. Shimadzu does not assume any responsibility or liability for any damage, whether direct or indirect, relating to the use of this publication. This publication is based upon the information available to Shimadzu on or before the date of publication, and subject to change without notice.

➤ Please fill out the survey

Related Products

Some products may be updated to newer models.

HPLC Column Solutions – Reversed phase and Normal phase –
Shim-pack

➤ SH-I-5SiI MS

Related Solutions

➤ Food Contamination

➤ 食品汚染

➤ Price Inquiry

➤ Product Inquiry

➤ Technical Service /
Support Inquiry

➤ Other Inquiry