

CoreFocus
Report
No.393

GCMS

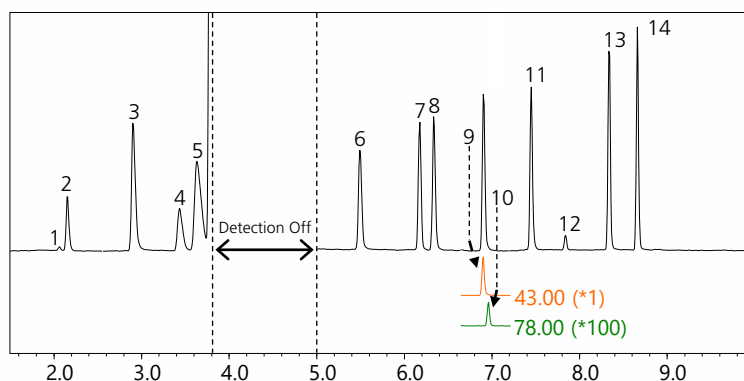
AOC

SH Series

SH-624

Analysis of Impurities in Alcohol-Based Hand Sanitizers

Keywords: FDA Guideline, Direct Injection GC-MS Method



1. Acetaldehyde
2. Methanol
3. Ethanol
4. Acetone
5. Isopropyl Alcohol
6. 1-Propanol
7. Ethyl Acetate
8. 2-Butanol
9. Isobutanol
10. Benzene
11. 1-Butanol
12. 1, 1-Diethoxyethane
13. 3-Methyl-1-Butanol
14. Amyl Alcohol

Instrument Configuration

Model : GCMS-QP™2020 NX
 Auto injector : AOC™-20i plus
 Auto sampler : AOC-20s Plus
 Column : SH-624 (30m x 0.25 mm I.D., 1.4 µm), P/N : 221-75863-30
GC
 Injection temp. : 250 °C
 Injection mode : Split
 Split ratio : 50
 Carrier gas : He
 Carrier gas control : Constant column flow rate (1 cm/min)
 Column oven temp. : 40 °C (5 min) - 30 °C /min - 240 °C (4 min)*, Total 15.67 min
 Injection volume : 1.0 µL
MS
 Ion source temp. : 230 °C
 Interface temp. : 240 °C
 Ionization method : EI
 Measurement mode : Scan/SIM (FASST mode)
 Scan range : m/z 29 to 300
 SIM ions : See MS table
 Event time : Scan 0.2 s, SIM 0.3 s

MS Table

Time (min)	Compound Name	Target	Ident 1	Ident 2
1.5 – 2.56	Acetaldehyde	44.0	29.0	-
	Methanol	31.0	29.0	-
2.56 – 4.00	Ethanol	31.0	45.0	-
	Acetone	43.0	58.0	-
	Isopropyl alcohol	45.0	59.0	-
5.00 – 6.65	1-Propanol	31.0	42.0	59.0
	Ethyl acetate	43.0	61.0	-
	2-Butanol	45.0	59.0	-
6.65 – 7.20	Isobutanol	43.0	42.0	-
	Benzene	78.0	77.0	-
7.20 – 10.00	1-Butanol	56.0	41.0	31.0
	1, 1-Diethoxyethane (Acetal)	45.0	73.0	103.0
	3-Methyl-1-butanol	55.0	42.0	70.0
	Amyl alcohol	42.0	55.0	41.0

The detector voltage was set to a relative value based on tuning.

* Under this oven heating condition, a high-power oven model is necessary.

Source : Application News M315 ([JP](#), [ENG](#))

CoreFocus, GCMS-QP and AOC are trademarks of Shimadzu Corporation or its affiliated companies in Japan and/or other countries.

Shimadzu Corporation
www.shimadzu.com/an/

For Research Use Only. Not for use in diagnostic procedures.

This publication may contain references to products that are not available in your country. Please contact us to check the availability of these products in your country.

The content of this publication shall not be reproduced, altered or sold for any commercial purpose without the written approval of Shimadzu.

Company names, products/service names and logos used in this publication are trademarks and trade names of Shimadzu Corporation, its subsidiaries or its affiliates, whether or not they are used with trademark symbol "TM" or "®". Third-party trademarks and trade names may be used in this publication to refer to either the entities or their products/services, whether or not they are used with trademark symbol "TM" or "®".

Shimadzu disclaims any proprietary interest in trademarks and trade names other than its own.

The information contained herein is provided to you "as is" without warranty of any kind including without limitation warranties as to its accuracy or completeness. Shimadzu does not assume any responsibility or liability for any damage, whether direct or indirect, relating to the use of this publication. This publication is based upon the information available to Shimadzu on or before the date of publication, and subject to change without notice.

➤ Please fill out the survey

Related Products

Some products may be updated to newer models.

HPLC Column Solutions - Reversed phase and Normal phase -
Shim-pack

➤ SH-624

Related Solutions

Cosmetics &
➤ Personal Care
Products

➤ 化粧品・パーソナル
ケア

➤ Price Inquiry

➤ Product Inquiry

➤ Technical Service /
Support Inquiry

➤ Other Inquiry