

CoreFocus
Report
No.396

GCMS

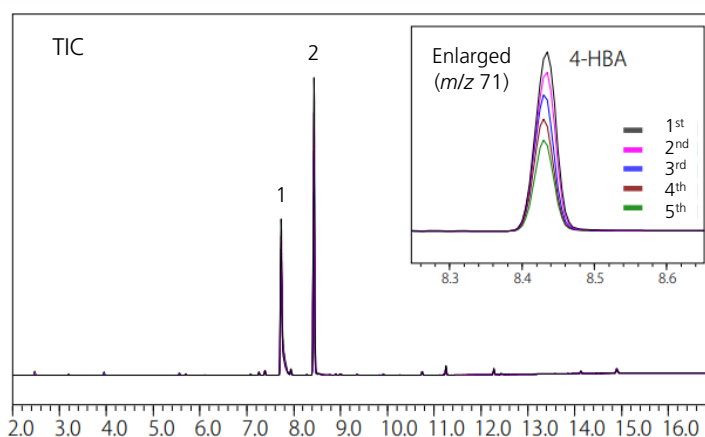
HS

SH Series

SH-PolarWax

Analysis of Residual Monomers in UV Curable Resin

Keywords: Polymer, Resin



1. 1,4-Butanediol
2. 4-Hydroxybutyl acrylate (4-HBA)

Model : GCMS-QP™2020 NX/HS-20

HS

Mode : Loop
Analysis mode : MHE
Oven temp. : 200 °C
Sample line temp. : 210 °C
Transfer line temp. : 220 °C
Gas pressure : 150 kPa
for vial pressurization
Vial equilibrating time : 30.0 min
Vial pressurizing time : 0.50 min
Pressure equilibrating time : 0.10 min
Load time : 0.50 min
Load equilibrating time : 0.10 min
Injection time : 0.10 min
Needle flushing time : 2.00 min

GC

Column : SH-PolarWax (30 m x 0.32 mm I.D., 0.5 µm)
P/N : 227-36251-01
Injection mode : Split
Split ratio : 100
Carrier gas : He
Carrier gas control : Constant linear velocity (50 cm/min)
Oven temp. : 100 °C - 10 °C/min - 240 °C (3 min)

MS (EI)

Ion source temp. : 200 °C
Interface temp. : 250 °C
Tuning mode : Standard
Measurement mode : Scan (m/z 35 to 500)
Event time : 0.3 s

Source : Application News 01-00174 ([JP](#))

CoreFocus and GCMS-QP are trademarks of Shimadzu Corporation or its affiliated companies in Japan and/or other countries.

Shimadzu Corporation
www.shimadzu.com/an/

For Research Use Only. Not for use in diagnostic procedures.

This publication may contain references to products that are not available in your country. Please contact us to check the availability of these products in your country.

The content of this publication shall not be reproduced, altered or sold for any commercial purpose without the written approval of Shimadzu.

Company names, products/service names and logos used in this publication are trademarks and trade names of Shimadzu Corporation, its subsidiaries or its affiliates, whether or not they are used with trademark symbol "TM" or "®". Third-party trademarks and trade names may be used in this publication to refer to either the entities or their products/services, whether or not they are used with trademark symbol "TM" or "®".

Shimadzu disclaims any proprietary interest in trademarks and trade names other than its own.

The information contained herein is provided to you "as is" without warranty of any kind including without limitation warranties as to its accuracy or completeness. Shimadzu does not assume any responsibility or liability for any damage, whether direct or indirect, relating to the use of this publication. This publication is based upon the information available to Shimadzu on or before the date of publication, and subject to change without notice.

➤ Please fill out the survey

Related Products

Some products may be updated to newer models.

HPLC Column Solutions – Reversed phase and Normal phase –
Shim-pack

➤ SH-PolarWax

Related Solutions

➤ Plastics

➤ プラスチック-化学

➤ Price Inquiry

➤ Product Inquiry

➤ Technical Service /
Support Inquiry

➤ Other Inquiry