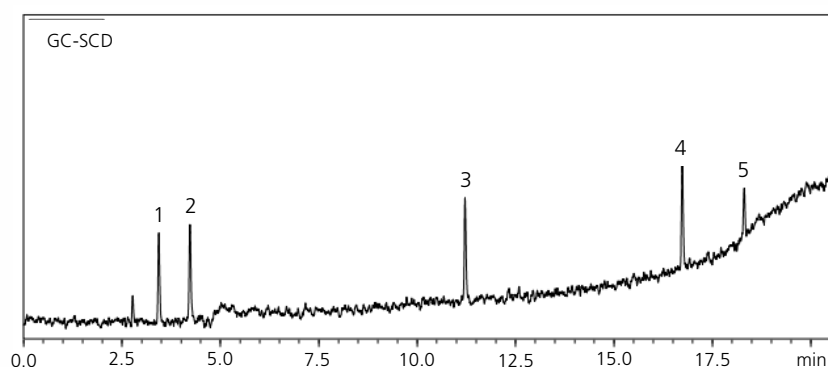


GCMS SCD AOC SH Series

SH-I-1MS

Monitoring of Sulfur Components by Simultaneous Analysis

Keywords: fossil fuels



1. 1-Propanethiol
2. Thiophene
3. Benzothiophene
4. Dibenzothiophene
5. 2,2'-Dithiodipyridine
(0.1 ppm each)

Model : GCMS-OP™2020 NX

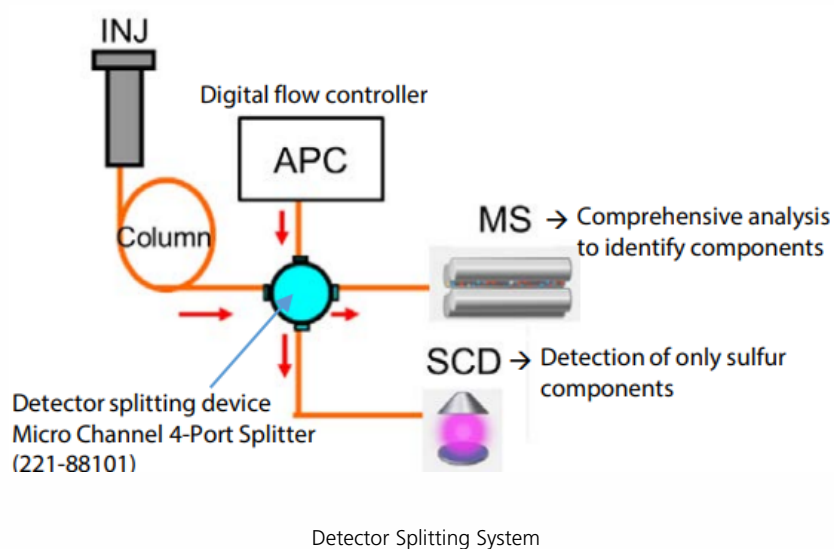
GC

Injection	: SPL
Injection volume	: 1.0 µL (using AOC™-30i)
Injection temp.	: 330 °C
Injection mode	: Split
Split ratio	: 1:15
Carrier gas	: He
Carrier gas control	: Linear velocity (45 cm/s)
Column	: SH-I-1MS (30m x 0.32 mm I.D., 4.0 µm), P/N : 227-36011-01
Column oven temp.	: 50 °C - 15 °C /min - 330 °C (2 min)
Detector	: Nexis™ SCD-2030
Interface temp.	: 280 °C
Electric furnace temp.	: 850 °C
Detector gas	: H ₂ 80.0 mL/min, N ₂ 40.0 mL/min O ₂ 10.0 mL/min, O ₃ 25.0 mL/min
Detector splitting system*	: Micro Channel 4-Port Splitter
Resistance tube	: 0.5 m x 0.15 mm I.D. (for both MS and SCD lines)
Detector branch ratio	: SCD : MS = 1 : 1.03
AUX-APC	: 20 kPa

MS

Ion source temp.	: 230 °C
Interface temp.	: 300 °C
Ionization method	: EI
Measurement mode	: Scan
Event time	: 0.3 s

*Detector splitting package (Splitter device + APC)
SMI FLOW DEVICE 2-Way Splitter with APC, P/N : 221-88100-41



Source : Application News 01-00206 ([JP](#), [ENG](#))

CoreFocus, GCMS-QP, AOC and Nexis are trademarks of Shimadzu Corporation or its affiliated companies in Japan and/or other countries.

Shimadzu Corporation
www.shimadzu.com/an/

For Research Use Only. Not for use in diagnostic procedures.

This publication may contain references to products that are not available in your country. Please contact us to check the availability of these products in your country.

The content of this publication shall not be reproduced, altered or sold for any commercial purpose without the written approval of Shimadzu.

Company names, products/service names and logos used in this publication are trademarks and trade names of Shimadzu Corporation, its subsidiaries or its affiliates, whether or not they are used with trademark symbol "TM" or "®".

Third-party trademarks and trade names may be used in this publication to refer to either the entities or their products/services, whether or not they are used with trademark symbol "TM" or "®".

Shimadzu disclaims any proprietary interest in trademarks and trade names other than its own.

The information contained herein is provided to you "as is" without warranty of any kind including without limitation warranties as to its accuracy or completeness. Shimadzu does not assume any responsibility or liability for any damage, whether direct or indirect, relating to the use of this publication. This publication is based upon the information available to Shimadzu on or before the date of publication, and subject to change without notice.

➤ Please fill out the survey

Related Products

Some products may be updated to newer models.

HPLC Column Solutions - Reversed phase and Normal phase -
Shim-pack

➤ SH-I-1MS

Related Solutions

Hydrocarbon
➤ Processing Industry
(Petrochemical, Ch

➤ 石油・石油系化学物
質

➤ Price Inquiry

➤ Product Inquiry

➤ Technical Service /
Support Inquiry

➤ Other Inquiry