

CoreFocus
Report
No.401

GCMS

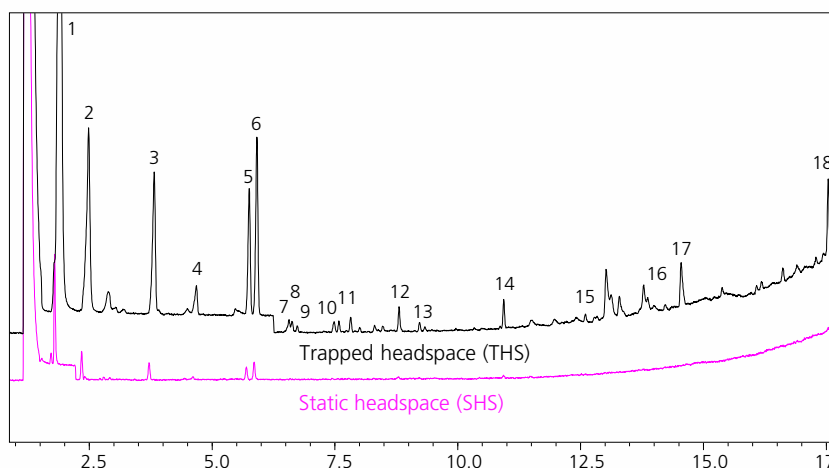
HS

SH Series

SH-I-624SiL MS

Aroma Components Analysis for Almonds

Keywords: Food, Nuts



1. Acetaldehyde
2. Pentane
3. Isobutyraldehyde
4. Ethyl Acetate
5. Isovaleraldehyde
6. 2-Methylbutyric aldehyde
7. Acetol
8. Pentanal
9. Propyl acetate
10. Dimethyl disulfide
11. 1-Methylpyrrole
12. Hexanal
13. Methylpyrazine
14. 2,5-Dimethylpyrazine
15. Acetophenone
16. Benzyl alcohol
17. Nonanal
18. Anethole

GC-MS Conditions

Model	: GCMS-QP™2020 NX/HS-20 NX Trap
Column	: SH-I-624SiL MS (30 m x 0.32 mm I.D., 1.8 µm) P/N : 227-36077-01
Column temp.	: 40 °C (2 min) - 10 °C/min - 200 °C (6 min) Total 24 min
Injection mode	: Split 1 : 20
Carrier gas controller	: Fixed linear velocity mode (He)
Linear velocity	: 43.2 cm/s
Interface temp.	: 250 °C
Ion source temp.	: 200 °C
Scan	: <i>m/z</i> 35 - 400

HS Sampling Conditions

Oven temp.	: 70 °C
Equilibration time	: 45 min
Sample line temp.	: 150 °C
Transfer line temp.	: 150 °C
Vial stirring	: Off
Vial volume	: 20 mL
Vial pressurization time	: 0.5 min
Vial pressure equilibrating time	: 0.1 min
Loading time	: 0.5 min
Load equilibrating time	: 0 min
Multi injection	: 3
Vial pressure	: 100.0 kPa (He)
Trap cooling temp.	: -10°C
Trap heating temp.	: 250 °C
Trap adsorbent	: Tenax TA 60/80 mesh 37 mg
Injection time	: 5.0 min
Needle flush time	: 5.0 min

Source : Application News 01-00218 ([JP](#), [ENG](#))

CoreFocus and GCMS-QP are trademarks of Shimadzu Corporation or its affiliated companies in Japan and/or other countries.

Shimadzu Corporation

www.shimadzu.com/an/

For Research Use Only. Not for use in diagnostic procedures.

This publication may contain references to products that are not available in your country. Please contact us to check the availability of these products in your country.

The content of this publication shall not be reproduced, altered or sold for any commercial purpose without the written approval of Shimadzu.

Company names, products/service names and logos used in this publication are trademarks and trade names of Shimadzu Corporation, its subsidiaries or its affiliates, whether or not they are used with trademark symbol "TM" or "®". Third-party trademarks and trade names may be used in this publication to refer to either the entities or their products/services, whether or not they are used with trademark symbol "TM" or "®".

Shimadzu disclaims any proprietary interest in trademarks and trade names other than its own.

The information contained herein is provided to you "as is" without warranty of any kind including without limitation warranties as to its accuracy or completeness. Shimadzu does not assume any responsibility or liability for any damage, whether direct or indirect, relating to the use of this publication. This publication is based upon the information available to Shimadzu on or before the date of publication, and subject to change without notice.

➤ Please fill out the survey

Related Products

Some products may be updated to newer models.

HPLC Column Solutions – Reversed phase and Normal phase –
Shim-pack

➤ SH-I-624SiI MS

Related Solutions

➤ Flavor Analysis

➤ におい、香り分析

➤ Price Inquiry

➤ Product Inquiry

➤ Technical Service /
Support Inquiry

➤ Other Inquiry