

CoreFocus
Report
No.405

GCMS

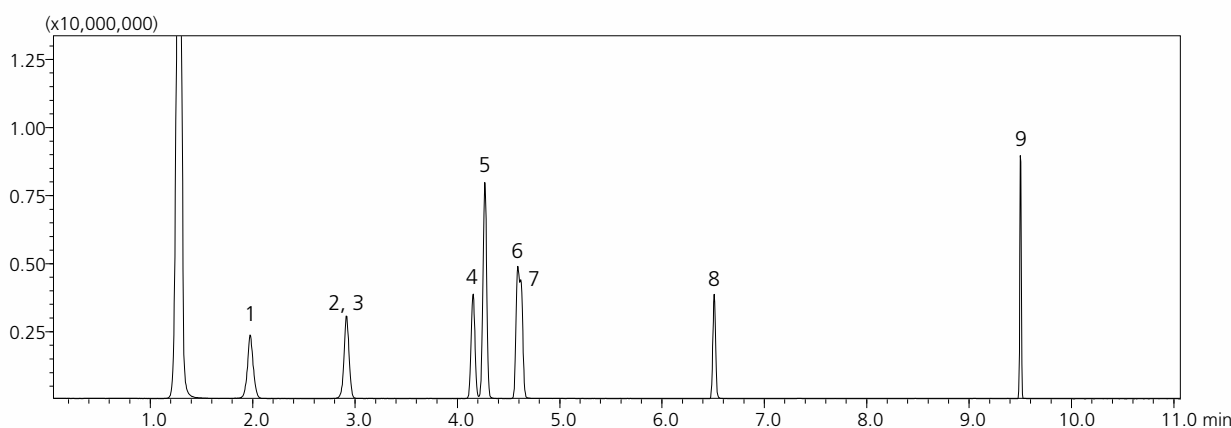
TD

SH Series

SH-5MS

**Measurement of VOCs in Vehicle Interiors
with Nitrogen as the Carrier Gas**

Keywords: Environment, Alternative carrier gas



1. Benzene, 2. Toluene-D8, 3. Toluene, 4. Ethylbenzene, 5. *m,p*-Xylene, 6. Styrene, 7. *o*-Xylene, 8. 1,4-Dichloro benzene, 9. Tetradecane
(1000 ng each)

Model : GCMS-QP™2020 NX/TD-30R

TD-30R

Tube desorb. temp. : 280 °C (10 min)
Tube desorb. flow : 60 mL/min
Trap cooling temp. : -20 °C
Trap desorb. temp. : 280 °C (10 min)
Joint temp. : 250 °C
Valve temp. : 250 °C
Transfer line temp. : 250 °C
Internal STD : Variable volume (20 mL/min, 0.1 min)
Restore : ON
Dry purge : -20 °C (20 mL/min, 3 min)

GC

Injection mode : Split
Split ratio : 50
Carrier gas : N₂
Carrier gas control : Linear velocity (40 cm/s)
Column : SH-5MS (30 m x 0.25 mm I.D., 0.25 µm)
P/N : 221-75855-30
Column oven temp. : 40 °C (1 min) - 10 °C /min - 100 °C - 40 °C/min
- 200 °C - 20 °C/min - 300 °C (5 min)

MS

Ion source temp. : 230 °C
Interface temp. : 280 °C
Acquisition mode : Scan
Scan mass range : *m/z* 45 - 600
Event time : 0.3 s

Source : Application News 01-00366 ([JP](#), [ENG](#))

CoreFocus and GCMS-QP are trademarks of Shimadzu Corporation or its affiliated companies in Japan and/or other countries.

Shimadzu Corporation

www.shimadzu.com/an/

For Research Use Only. Not for use in diagnostic procedures.

This publication may contain references to products that are not available in your country. Please contact us to check the availability of these products in your country.

The content of this publication shall not be reproduced, altered or sold for any commercial purpose without the written approval of Shimadzu.

Company names, products/service names and logos used in this publication are trademarks and trade names of Shimadzu Corporation, its subsidiaries or its affiliates, whether or not they are used with trademark symbol "TM" or "®". Third-party trademarks and trade names may be used in this publication to refer to either the entities or their products/services, whether or not they are used with trademark symbol "TM" or "®".

Shimadzu disclaims any proprietary interest in trademarks and trade names other than its own.

The information contained herein is provided to you "as is" without warranty of any kind including without limitation warranties as to its accuracy or completeness. Shimadzu does not assume any responsibility or liability for any damage, whether direct or indirect, relating to the use of this publication. This publication is based upon the information available to Shimadzu on or before the date of publication, and subject to change without notice.

➤ Please fill out the survey

Related Products

Some products may be updated to newer models.

HPLC Column Solutions - Reversed phase and Normal phase -
Shim-pack

➤ SH-5MS

Related Solutions

➤ Air

➤ 大気

➤ Price Inquiry

➤ Product Inquiry

➤ Technical Service /
Support Inquiry

➤ Other Inquiry