

CoreFocus
Report
No.467

GC

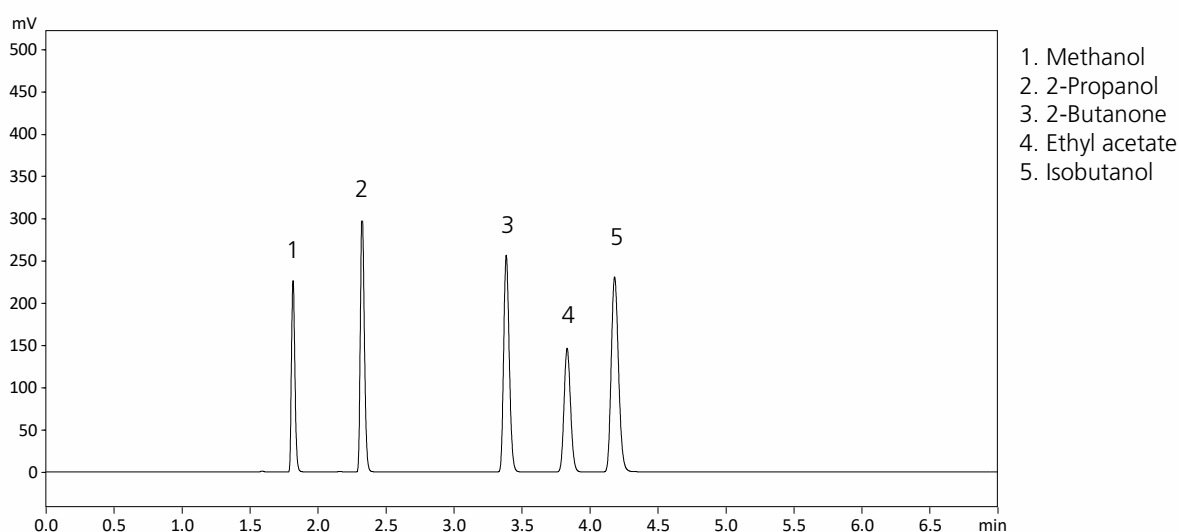
FID

SH Series

SH-1

Analysis of Residual Solvents in Sucrose Fatty Acid Esters

Keywords: Headspace Sampler, Food additives, Standard addition method



Model	: Nexis™ GC-2030	Headspace Autosampler	: HS-20 NX (Loop)
Injection Method	: Split	Oven Temperature	: 80 °C
Split Ratio	: 1 : 10	Sampling Line Temperature	: 85 °C
Carrier Gas	: N ₂	Transfer Line Temperature	: 110 °C
Carrier Gas Control	: Constant Linear Velocity Mode (30 cm/sec)	Vial Pressure	: 80.0 kPa
Column	: SH-1 (30 m × 0.53 mm I.D., 1.5 μm), P/N : 221-75732-30	Vial Holding Time	: 40 min
Column Temperature	: 40°C (7 min)	Vial Pressurization Time	: 1.0 min
Detector	: FID	Pressure Equilibrate Time	: 0.1 min
Detector Temperature	: 200°C	Loading Time	: 0.5 min
Detector Gas	: H ₂ 32 mL/min, Air 200 mL/min	Injection Time	: 0.5 min
Makeup Gas	: N ₂ 24 mL/min	Needle Flush Time	: 5 min

Source : Application News 01-00486 ([JP](#), [ENG](#))

CoreFocus and Nexis are trademarks of Shimadzu Corporation or its affiliated companies in Japan and/or other countries.

Shimadzu Corporation
www.shimadzu.com/an/

For Research Use Only. Not for use in diagnostic procedures.

This publication may contain references to products that are not available in your country. Please contact us to check the availability of these products in your country.

The content of this publication shall not be reproduced, altered or sold for any commercial purpose without the written approval of Shimadzu.

Company names, products/service names and logos used in this publication are trademarks and trade names of Shimadzu Corporation, its subsidiaries or its affiliates, whether or not they are used with trademark symbol "TM" or "®". Third-party trademarks and trade names may be used in this publication to refer to either the entities or their products/services, whether or not they are used with trademark symbol "TM" or "®".

Shimadzu disclaims any proprietary interest in trademarks and trade names other than its own.

The information contained herein is provided to you "as is" without warranty of any kind including without limitation warranties as to its accuracy or completeness. Shimadzu does not assume any responsibility or liability for any damage, whether direct or indirect, relating to the use of this publication. This publication is based upon the information available to Shimadzu on or before the date of publication, and subject to change without notice.

➤ Please fill out the survey

Related Products

Some products may be updated to newer models.

HPLC Column Solutions – Reversed phase and Normal phase –
Shim-pack

➤ SH-1

Related Solutions

➤ Residual Pesticides

➤ 残留農薬分析

➤ Price Inquiry

➤ Product Inquiry

➤ Technical Service /
Support Inquiry

➤ Other Inquiry