

CoreFocus
Report
No.504

GC

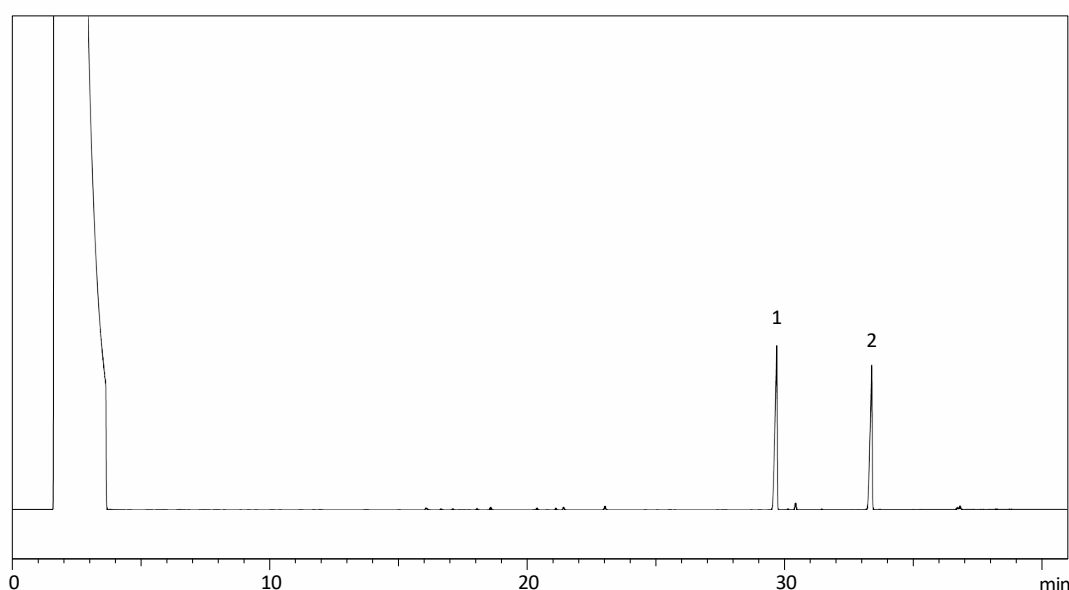
FID

SH Series

SH-PolarWax

Analysis of stearic and palmitic acids

Keywords: Magnesium stearate purity test, Stearic acid-palmitic acid content ratio



1.methyl palmitate
2.methyl stearate

Column	: SH-PolarWax 30 m x 0.32 mm I.D., df= 0.5 µm, P/N : 227-36251-01
Column Oven Temp.	: 70 °C (2 min) → 5 °C/min → 240 °C (5 min)
Column Flowrate	: 2.42 mL/min
Injection Temperature	: 220 °C
Injection Mode	: Splitless
Sampling Time	: 2.0 min
Carrier Gas	: He, 40 cm/sec (Linear Velocity)
FID	: 260 °C (H ₂ 40 mL/min, Air 400 mL/min)
Makeup Gas	: He 30 mL/min

CoreFocus is a trademark of Shimadzu Corporation or its affiliated companies in Japan and/or other countries.

Shimadzu Corporation
www.shimadzu.com/an/

For Research Use Only. Not for use in diagnostic procedures.

This publication may contain references to products that are not available in your country. Please contact us to check the availability of these products in your country.

The content of this publication shall not be reproduced, altered or sold for any commercial purpose without the written approval of Shimadzu.

Company names, products/service names and logos used in this publication are trademarks and trade names of Shimadzu Corporation, its subsidiaries or its affiliates, whether or not they are used with trademark symbol "TM" or "®". Third-party trademarks and trade names may be used in this publication to refer to either the entities or their products/services, whether or not they are used with trademark symbol "TM" or "®".

Shimadzu disclaims any proprietary interest in trademarks and trade names other than its own.

The information contained herein is provided to you "as is" without warranty of any kind including without limitation warranties as to its accuracy or completeness. Shimadzu does not assume any responsibility or liability for any damage, whether direct or indirect, relating to the use of this publication. This publication is based upon the information available to Shimadzu on or before the date of publication, and subject to change without notice.

➤ Please fill out the survey

Related Products

Some products may be updated to newer models.

HPLC Column Solutions - Reversed phase and Normal phase -
Shim-pack

➤ SH-PolarWax

Related Solutions

Cosmetics &
➤ Personal Care
Products

➤ 化粧品・パーソナル
ケア

➤ Price Inquiry

➤ Product Inquiry

➤ Technical Service /
Support Inquiry

➤ Other Inquiry