

CoreFocus
Report
No.526

LC

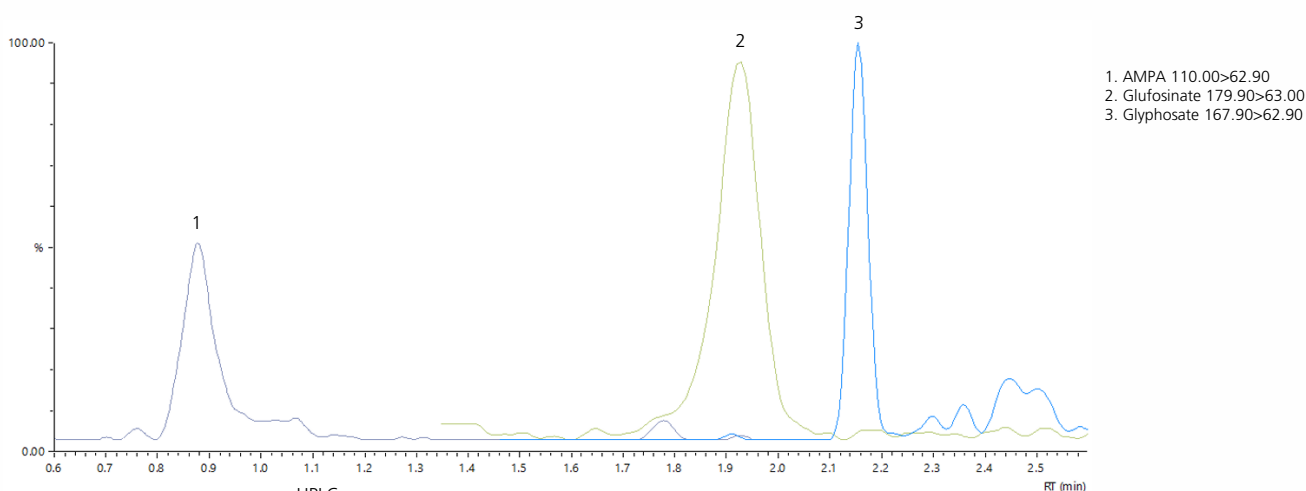
Reversed-phase

Shim-pack™ Series

Shim-pack Scepter™ Phenyl-120

Analysis of glyphosate, glufosinate and AMPA

Keywords: Pesticides, High polar molecules, Ion-pair reagent



HPLC	
Column	: Shim-pack Scepter Phenyl-120[metal-free] 100 mm x 2.1 mm I.D., 3 µm, P/N : 227-31093-02
Mobile phase A	: Water
Mobile phase B	: Acetonitrile
Time program	: 0%B (0.0-0.2 min) - 100%B (3.1-4.0 min) - 0%B (4.1-7.0 min)
Flow rate	: 0.4 mL/min
Column temp.	: 50 °C
Injection volume	: 5 µL
Sample pretreatment	: Add the same amount of 50 mmol/L DAAA solution as the sample

MS	
System	: LCMS™-8060
Interface	: Electrospray (ESI)
Neb gas	: 3 L/min
Drying gas	: 5 L/min
Heating gas	: 15 L/min
Desolvation line	: 300 °C
Heat block	: 500 °C
Interface	: 350 °C
CID	: 325 kPa
Interface Voltage	: -5 kV

Source : Application News C220 ([JP](#))

CoreFocus, Shim-pack Scepter, Shim-pack, and LCMS are trademarks of Shimadzu Corporation or its affiliated companies in Japan and/or other countries.

Shimadzu Corporation
www.shimadzu.com/an/

For Research Use Only. Not for use in diagnostic procedures.

This publication may contain references to products that are not available in your country. Please contact us to check the availability of these products in your country.

The content of this publication shall not be reproduced, altered or sold for any commercial purpose without the written approval of Shimadzu.

Company names, products/service names and logos used in this publication are trademarks and trade names of Shimadzu Corporation, its subsidiaries or its affiliates, whether or not they are used with trademark symbol "TM" or "®". Third-party trademarks and trade names may be used in this publication to refer to either the entities or their products/services, whether or not they are used with trademark symbol "TM" or "®".

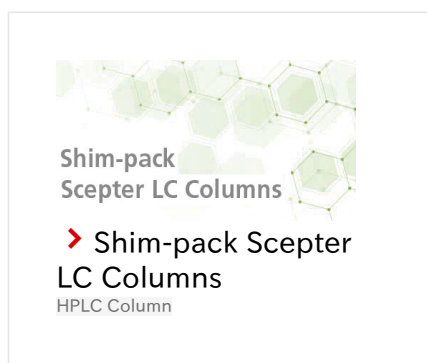
Shimadzu disclaims any proprietary interest in trademarks and trade names other than its own.

The information contained herein is provided to you "as is" without warranty of any kind including without limitation warranties as to its accuracy or completeness. Shimadzu does not assume any responsibility or liability for any damage, whether direct or indirect, relating to the use of this publication. This publication is based upon the information available to Shimadzu on or before the date of publication, and subject to change without notice.

➤ Please fill out the survey

Related Products

Some products may be updated to newer models.



Related Solutions

➤ Soil

➤ 土壤

➤ Price Inquiry

➤ Product Inquiry

➤ Technical Service /
Support Inquiry

➤ Other Inquiry