

# Application News

High Performance Liquid Chromatograph Mass Spectrometer LCMS-9050

## Qualitative Analysis of Drug Metabolites Using LCMS-9050

Yutaka Umakoshi

### User Benefits

- ◆ The LCMS-9050 quadrupole time-of-flight (Q-TOF) mass spectrometer and LabSolutions Insight Explore™ provide qualitative analysis of drug metabolites.
- ◆ Analyze and Target Screening function in LabSolutions Insight Explore enables peak extraction of candidate drug metabolites.

### ■ Introduction

After a drug is ingested into the body, it is metabolized by various reactions, including oxidation, reduction, hydrolysis, and conjugation. The prediction of drug metabolites is important because the metabolites may differ from the original drug in terms of efficacy and toxicity.

This Application News introduces an example of qualitative analysis of drug metabolites using the LCMS-9050 quadrupole time-of-flight (Q-TOF) mass spectrometer. Lenvatinib, a known anticancer drug, was administered orally to rats, and the metabolites in the liver were analyzed. Drug metabolite peaks were extracted using the Analyze function in LabSolutions Insight Explore. The Target Screening function narrowed down the candidate peaks based on a list of drug metabolites, and the MS and MS/MS spectra were analyzed in detail.

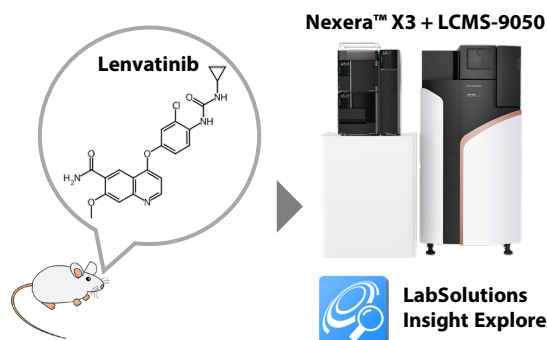


Fig. 1 Overview

### ■ Sample Pretreatments and Analytical Conditions

Lenvatinib was administered (4 mg/kg/day) orally to male SD rats aged 10 weeks for 5 days, and their livers were then removed. Sample preparation was performed as follows.

1. Approximately 60 mg of rat liver was weighed, and methanol was added to give a concentration of 50 mg/mL.
2. Three zirconia beads 3 mm were added and crushed with Bead Smash 12 (Cooling, 30 sec, 4,000 rpm).
3. After centrifugation (4 °C, 5 min, 13,000 rpm), 500 µL of the supernatant was collected.
4. After centrifugal concentration, it was redissolved in 50 µL of methanol.

Table 1 shows the analysis conditions. LCMS-9050 was used for the measurement, and the data was acquired in Data Dependent Acquisition (DDA) mode. In DDA mode, MS/MS spectrum of ions with high intensity in MS measurement are automatically acquired. In this mode, MS spectrum useful for molecular composition analysis and MS/MS spectrum useful for structural analysis can be acquired simultaneously.

Table 1 Analytical Conditions

<b>[HPLC] Nexera X3</b>	
Column:	Shim-pack Scepter™ C18-120 (100 mm × 2.1 mm I.D., 3 µm)*1
Column Temp.:	40 °C
Solvent A:	Water + 0.1 % Formic acid
Solvent B:	Acetonitrile + 0.1 % Formic acid
Rinse:	Acetonitrile + 0.1 % Formic acid
Gradient:	B conc. 5 % (0 min) → 40 % (9.0 min) → 98 % (10.0-12.0 min) → 5 % (12.1-15.0 min)
Flowrate:	0.25 mL/min
Injection Volume:	5 µL
<b>[MS] LCMS-9050</b>	
Ionization:	ESI positive
Nebulizing Gas:	3.0 L/min
Drying Gas:	10.0 L/min
Heating Gas:	10.0 L/min
DL Temp.:	250 °C
Heat Block Temp.:	400 °C
Interface Temp.:	300 °C
CID Gas Pressure:	230 kPa
Mode:	DDA
MS Scan Range:	m/z 50-1,000 (0.100 sec)
MS/MS Scan Range:	m/z 50-1,000 (0.100 sec × 10)
CE:	35 ± 17 kV
DDA Threshold:	3,000

\*1 P/N: 227-31014-05

### ■ Data Analysis

Fig. 2 shows the workflow for metabolite qualitative analysis. First, a list of molecular formulas of metabolites that may be produced by lenvatinib was prepared. The list of molecular formulas was made using previous research and metabolic reaction prediction software. Next, the peak extraction was performed using the Analyze function of LabSolutions Insight Explore. After that, the Target Screening function imported the prepared list and narrowed down the candidate peaks.

Name	Formula
Lenvatinib	C21H19CIN4O5
Demethylation	C20H17CIN4O4
Demethylation, Oxidation	C20H17CIN4O5
Hydrolysis	C17H14CIN3O3
Oxidation	C21H19CIN4O5
.	.
.	.
.	.

#	RT	m/z	Response	Target Name	Target Formula	Target m/z	Mass Error (mDa)
675	8.113	443.11239	1865758	Oxidation	C21H19CIN4O5	443.11167	0.72
417	6.309	443.11238	432537	Oxidation	C21H19CIN4O5	443.11167	0.71
122	3.855	219.07891	188734	O-dearylation2	C11H18N2O3	219.07642	0.29
303	5.392	403.09096	791444	O-dearylation1 OH-gl-	C16H19CIN2O6	403.09027	0.69
584	7.497	227.05843	2397710	O-dearylation1	C10H11CIN2O2	227.05818	0.25
551	7.269	427.11738	9222297	Lenvatinib	C21H19CIN4O4	427.11676	0.62
435	6.439	344.08019	3490408	Hydrolysis	C17H14CIN3O3	344.07965	0.54
581	7.364	413.10186	108585	Demethylation	C20H17CIN4O4	413.10111	0.75
295	5.359	399.12836	138870	.....	.....	.....	.....
294	5.364	397.18096	149472	.....	.....	.....	.....
293	5.359	396.17704	584142	.....	.....	.....	.....
292	5.364	378.15186	147977	.....	.....	.....	.....
291	5.359	378.14937	1134566	.....	.....	.....	.....
290	5.359	377.14632	5864459	.....	.....	.....	.....
289	5.338	368.15571	253334	.....	.....	.....	.....
288	5.319	415.13070	594592	.....	.....	.....	.....
287	5.315	402.23407	514694	.....	.....	.....	.....
297	5.373	418.15952	120751	.....	.....	.....	.....

Fig. 2 Workflow of Qualitative Analysis

## Detected Compounds

The workflow described above detected several metabolites that were likely derived from lenvatinib. The chromatograms of the detected compounds are shown in Fig. 3. In addition to lenvatinib (1), compounds thought to be derived from demethylation (2), hydrolysis (3), dearylation (4), (5), (6), and oxidation (7) reactions were detected.

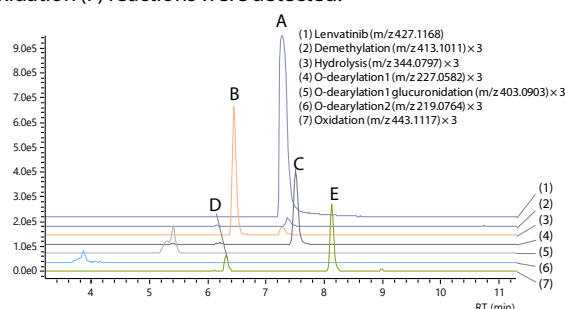


Fig. 3 Chromatogram

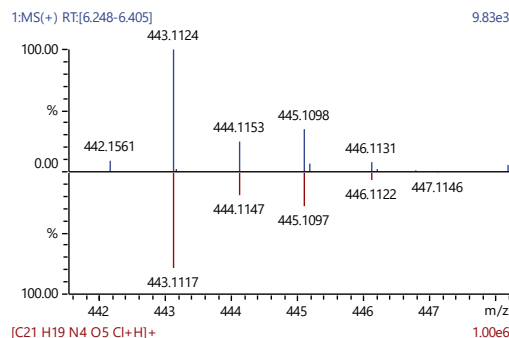
(All peaks except for lenvatinib are shown at 3-fold magnification.)

Below is a more detailed analysis of peak A for lenvatinib and peaks B to E for metabolites with higher intensities.

## Comparison of Measured and Theoretical MS Spectra

Fig. 4 shows the measured and theoretical MS spectra. The isotopic ratio of  $^{35}\text{Cl}$  to  $^{37}\text{Cl}$  was approximately 3:1, and all peaks A to E were confirmed to reflect the natural isotopic ratio of chlorine in the MS spectrum. It was also confirmed that the differences between the measured and theoretical monoisotopic mass were all within 1 mDa.

D: Oxidation (C<sub>21</sub>H<sub>19</sub>ClN<sub>4</sub>O<sub>5</sub>) Mass Error: 0.72 mDa



E: Oxidation (C<sub>21</sub>H<sub>19</sub>ClN<sub>4</sub>O<sub>5</sub>) Mass Error: 0.72 mDa

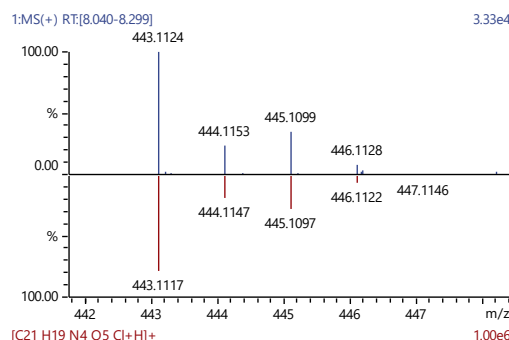
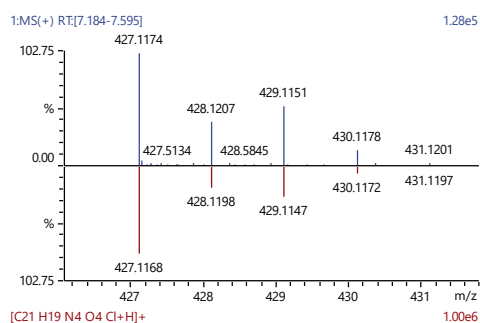


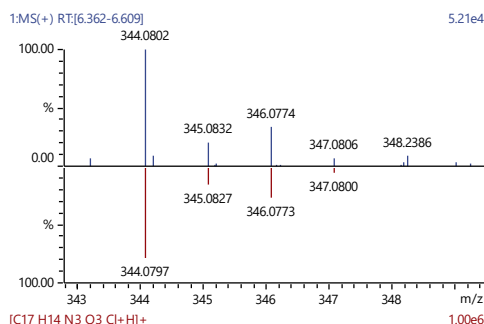
Fig. 4 MS Spectrum

(Top: measured MS spectrum, bottom: theoretical MS spectrum)

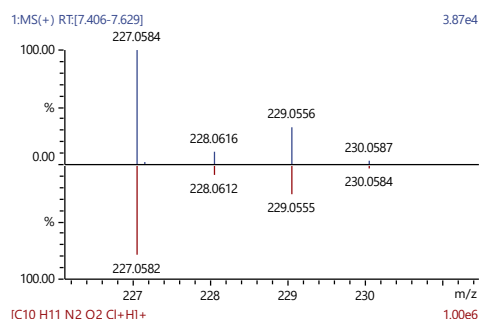
A: Lenvatinib (C<sub>21</sub>H<sub>19</sub>ClN<sub>4</sub>O<sub>4</sub>) Mass Error: 0.63 mDa



B: Hydrolysis (C<sub>17</sub>H<sub>14</sub>ClN<sub>3</sub>O<sub>3</sub>) Mass Error: 0.54 mDa



C: O-dearylation1 (C<sub>10</sub>H<sub>11</sub>ClN<sub>2</sub>O<sub>2</sub>) Mass Error: 0.24 mDa



## MS/MS Spectrum

Fig. 5 shows the MS/MS spectrum acquired in DDA mode. The cleavage positions predicted using the Assign function in LabSolutions Insight Explore are also shown. For more information about the Assign function, see the previous Application News.<sup>1,2)</sup>

A: Lenvatinib (C<sub>21</sub>H<sub>19</sub>ClN<sub>4</sub>O<sub>4</sub>)

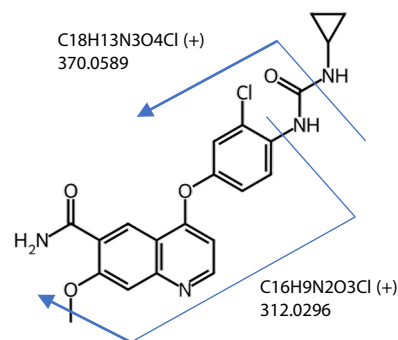
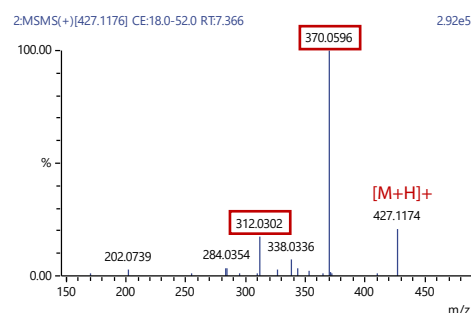
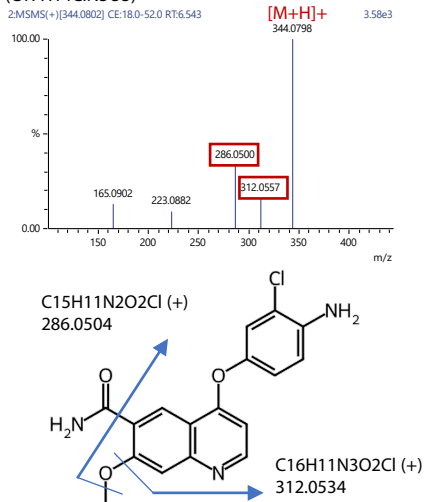
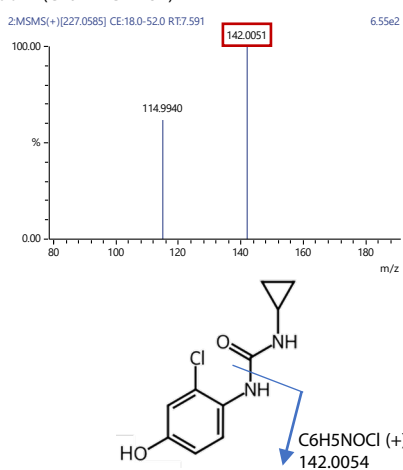


Fig 5 MS/MS Spectrum and Estimated Cleavage Positions

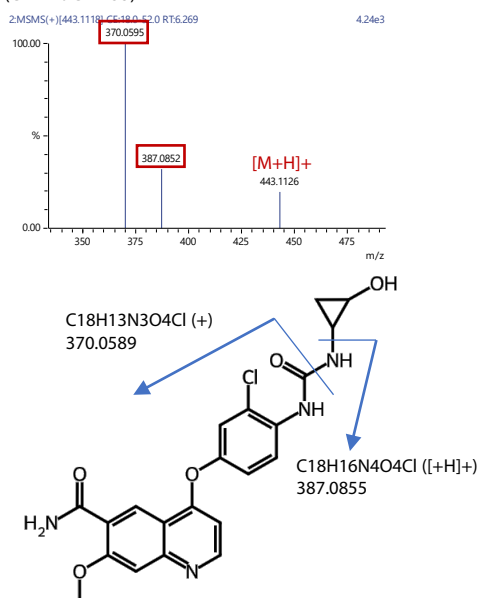
#### B: Hydrolysis (C17H14ClN3O3)



#### C: O-dearylation1 (C10H11ClN2O2)



#### D: Oxidation (C21H19ClN4O5)



#### E: Oxidation (C21H19ClN4O5)

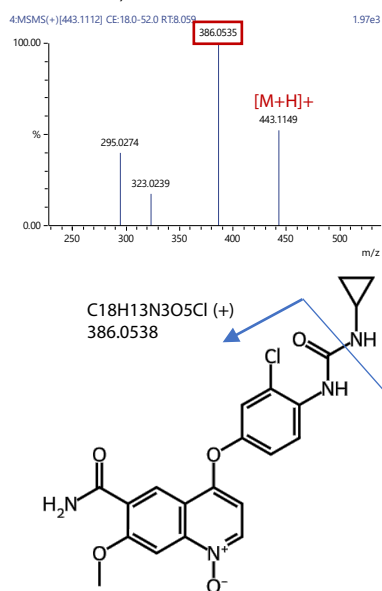


Fig 5 MS/MS Spectrum and Estimated Cleavage Positions (Continued)  
Since the detailed oxidation positions of peaks D and E could not be determined from the MS/MS spectrum, the estimated structures are shown.

Two metabolites produced by oxidation, peaks D and E, were detected. The product ion with the highest intensity, peak D, was C18H13N3O4Cl (+), consistent with lenvatinib. On the other hand, the product ion with the highest intensity, peak E, was C18H13N3O5Cl (+), which was different from lenvatinib. Therefore, it was assumed that peaks D and E had different oxidation positions.

### ■ Conclusion

Several metabolites derived from lenvatinib were detected by the LCMS-9050 quadrupole time-of-flight mass spectrometer and LabSolutions Insight Explore. By preparing a list of drug metabolites, it was possible to easily extract candidate metabolite peaks. This workflow can also be applied to the metabolite analysis of drugs other than lenvatinib.

#### <Acknowledgements>

We would like to express our sincere thanks to Dr. Satoshi Yamauchi of Nara Medical University for providing us with samples for this application.

#### <Related Applications>

1. Analysis of Impurities in Pharmaceuticals Using LCMS-9030 Quadrupole Time-of-Flight Liquid Chromatograph-Mass Spectrometer [01-00017-EN](#)
2. Screening Analysis of Metabolites in Red Wine [01-00329-EN](#)

LabSolutions Insight Explore, Nexera, and Shim-pack Scepter are trademarks of Shimadzu Corporation or its affiliated companies in Japan and/or other countries.



**SHIMADZU**

Shimadzu Corporation

[www.shimadzu.com/an/](http://www.shimadzu.com/an/)

For Research Use Only. Not for use in diagnostic procedures.

This publication may contain references to products that are not available in your country. Please contact us to check the availability of these products in your country.  
The content of this publication shall not be reproduced, altered or sold for any commercial purpose without the written approval of Shimadzu. See <http://www.shimadzu.com/about/trademarks/index.html> for details.

Third party trademarks and trade names may be used in this publication to refer to either the entities or their products/services, whether or not they are used with trademark symbol "TM" or "®".

Shimadzu disclaims any proprietary interest in trademarks and trade names other than its own.

The information contained herein is provided to you "as is" without warranty of any kind including without limitation warranties as to its accuracy or completeness. Shimadzu does not assume any responsibility or liability for any damage, whether direct or indirect, relating to the use of this publication. This publication is based upon the information available to Shimadzu on or before the date of publication, and subject to change without notice.

01-00757-EN

First Edition: Jun. 2024

## Related Products

Some products may be updated to newer models.



### > LCMS-9050

Quadrupole Time-of-Flight Liquid  
Chromatograph Mas...



### Shim-pack Scepter LC Columns

> Shim-pack Scepter  
LC Columns  
HPLC Column

## Related Solutions

> Small Molecule  
Pharmaceutical

> Life Science

> Metabolomics

> Pharmaceutical and  
Biopharmaceutical

> Price Inquiry

> Product Inquiry

> Technical Service /  
Support Inquiry

> Other Inquiry