

**CoreFocus**  
**Report**  
**No.39**

LC

Reversed-phase

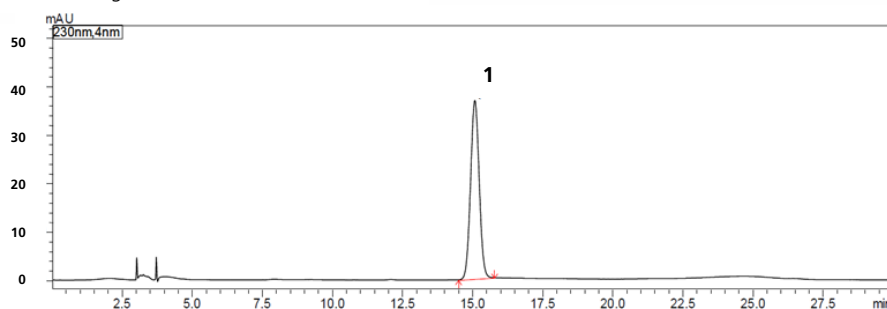
Shim-pack Series

**Shim-pack™ VP-ODS**

**Analysis of Paeoniflorin in *White Peony***

**Keywords: Paeonia moutan, Paeony root , Terpene glycoside, Herbal medicine**

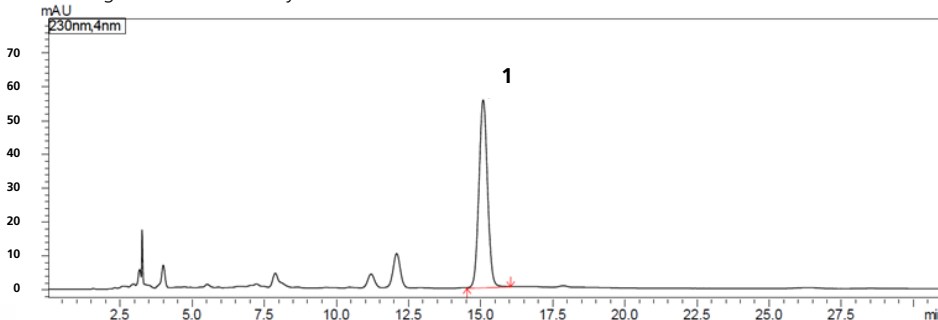
Chromatogram of Standard Mix



1. Paeoniflorin

Standard  
Paeoniflorin (60 µg/mL in Methanol)

Chromatogram of *White Peony*



Pretreatment procedure

- Weigh 0.1 g of sample (commercially available *White Peony* powder) and transfer into a 50 mL measuring flask.
- Add 50 mL of Ethanol into flask.
- Close the stopper.
- Ultrasonically treat it (power 240 W, frequency 45 kHz) for 30 minutes.
- After cooling, add Ethanol to bring the final volume to 50 mL.
- Shake well and filter into a sample vial.

Column	: Shim-pack VP-ODS (250 mm x 4.6 mm I.D., 5 µm), P/N : 228-34937-92
Mobile phase	: A) 0.1% Phosphoric acid aqueous solution B) Acetonitrile A : B = 86 : 14 (Isocratic elution)
Flow rate	: 1.0 mL/min
Column temp.	: 25°C
Injection vol.	: 10 µL
Vial	: LabTotal™ Vial for LC/LCMS, P/N : 227-34001-01
Detection	: UV at 230 nm

CoreFocus, Shim-pack and LabTotal are trademarks of Shimadzu Corporation or its affiliated companies in Japan and/or other countries.

**Shimadzu Corporation**  
**www.shimadzu.com/an/**

**For Research Use Only. Not for use in diagnostic procedures.**

This publication may contain references to products that are not available in your country. Please contact us to check the availability of these products in your country.

The content of this publication shall not be reproduced, altered or sold for any commercial purpose without the written approval of Shimadzu.

Company names, products/service names and logos used in this publication are trademarks and trade names of Shimadzu Corporation, its subsidiaries or its affiliates, whether or not they are used with trademark symbol "TM" or "®". Third-party trademarks and trade names may be used in this publication to refer to either the entities or their products/services, whether or not they are used with trademark symbol "TM" or "®".

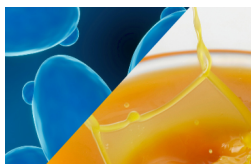
Shimadzu disclaims any proprietary interest in trademarks and trade names other than its own.

The information contained herein is provided to you "as is" without warranty of any kind including without limitation warranties as to its accuracy or completeness. Shimadzu does not assume any responsibility or liability for any damage, whether direct or indirect, relating to the use of this publication. This publication is based upon the information available to Shimadzu on or before the date of publication, and subject to change without notice.

➤ Please fill out the survey

## Related Products

Some products may be updated to newer models.



### ➤ Shim-pack SUR-Na Columns

Analyzing Sugars in Foods and Biofuels

## Related Solutions

➤ Food and Nutrition

➤ 栄養・機能性成分

➤ Price Inquiry

➤ Product Inquiry

➤ Technical Service /  
Support Inquiry

➤ Other Inquiry