

CoreFocus
Report
No.550

LC

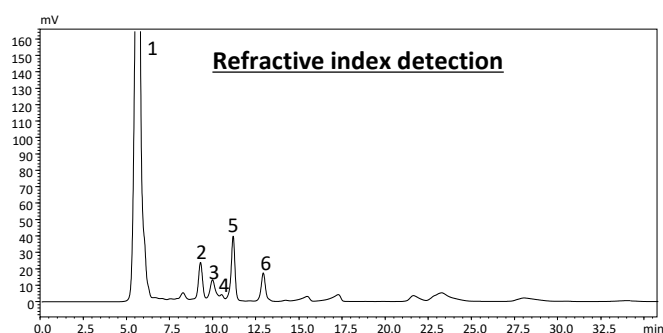
Size exclusion mode and Sodium-based ligand exchange mode

Shim-pack Series

Shim-pack™ SUR-Na

Chromatographic elution pattern of Soy sauce

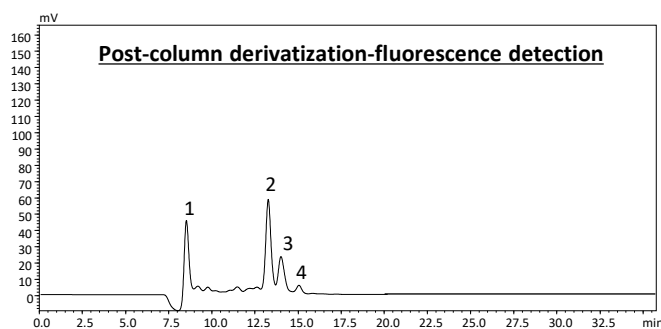
Keywords: Retention index, Sugars, Food



1. Anionic components such as acetic acid and chloride and polysaccharides (around exclusion limit)
2. Glucose
3. Galactose
4. Arabinose
5. Glycerol
6. Ethanol, etc. (around penetration limit)

The sample was ultrafiltered and diluted 10 times with water and measured.

Instrument	: Nexera™ lite
Column	: Shim-pack SUR-Na (250 mm x 7.8 mm I.D., 8 μm) 1 pc, P/N : 228-59529-01
Guard column	: Shim-pack SUR-Na (G) (50 mm x 7.8 mm I.D., 8 μm), P/N : 228-59529-02
Mobile phase	: Water
Flow rate	: 0.7 mL/min
Column temp.	: 80°C
Injection volume	: 10 μL
Detector	: Refractive index detector RID-20A



1. Polysaccharides (around exclusion limit)
2. Glucose
3. Galactose
4. Arabinose

Instrument	: Nexera™ reducing sugar analysis system
Flow rate (Mobile phase)	: 0.6 mL/min
(Columns, Mobile phase, Column temp., Inj. vol. and sample solution are the same as refractive index detection.)	
Reaction solution	: 10 g/L L-Arginine, 30 g/L Boric acid aqueous solution
Flow rate (Reaction solution)	: 0.5 mL/min
Reaction tube	: SUS, 8 m L. x 0.5 mm i.d.
Reaction temp.	: 150°C
Detector	: Spectrofluorometric detector RF-20Axs Ex 320 nm, Em 430 nm

CoreFocus, Shim-pack and Nexera are trademarks of Shimadzu Corporation or its affiliated companies in Japan and/or other countries.

Shimadzu Corporation
www.shimadzu.com/an/

For Research Use Only. Not for use in diagnostic procedures.

This publication may contain references to products that are not available in your country. Please contact us to check the availability of these products in your country.

The content of this publication shall not be reproduced, altered or sold for any commercial purpose without the written approval of Shimadzu.

Company names, products/service names and logos used in this publication are trademarks and trade names of Shimadzu Corporation, its subsidiaries or its affiliates, whether or not they are used with trademark symbol "TM" or "®".

Third-party trademarks and trade names may be used in this publication to refer to either the entities or their products/services, whether or not they are used with trademark symbol "TM" or "®".

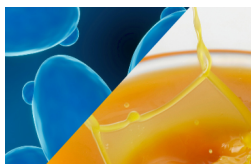
Shimadzu disclaims any proprietary interest in trademarks and trade names other than its own.

The information contained herein is provided to you "as is" without warranty of any kind including without limitation warranties as to its accuracy or completeness. Shimadzu does not assume any responsibility or liability for any damage, whether direct or indirect, relating to the use of this publication. This publication is based upon the information available to Shimadzu on or before the date of publication, and subject to change without notice.

➤ Please fill out the survey

Related Products

Some products may be updated to newer models.



➤ Shim-pack SUR-Na Columns

Analyzing Sugars in Foods and Biofuels

Related Solutions

➤ Food and Nutrition

➤ 栄養・機能性成分

➤ Price Inquiry

➤ Product Inquiry

➤ Technical Service /
Support Inquiry

➤ Other Inquiry