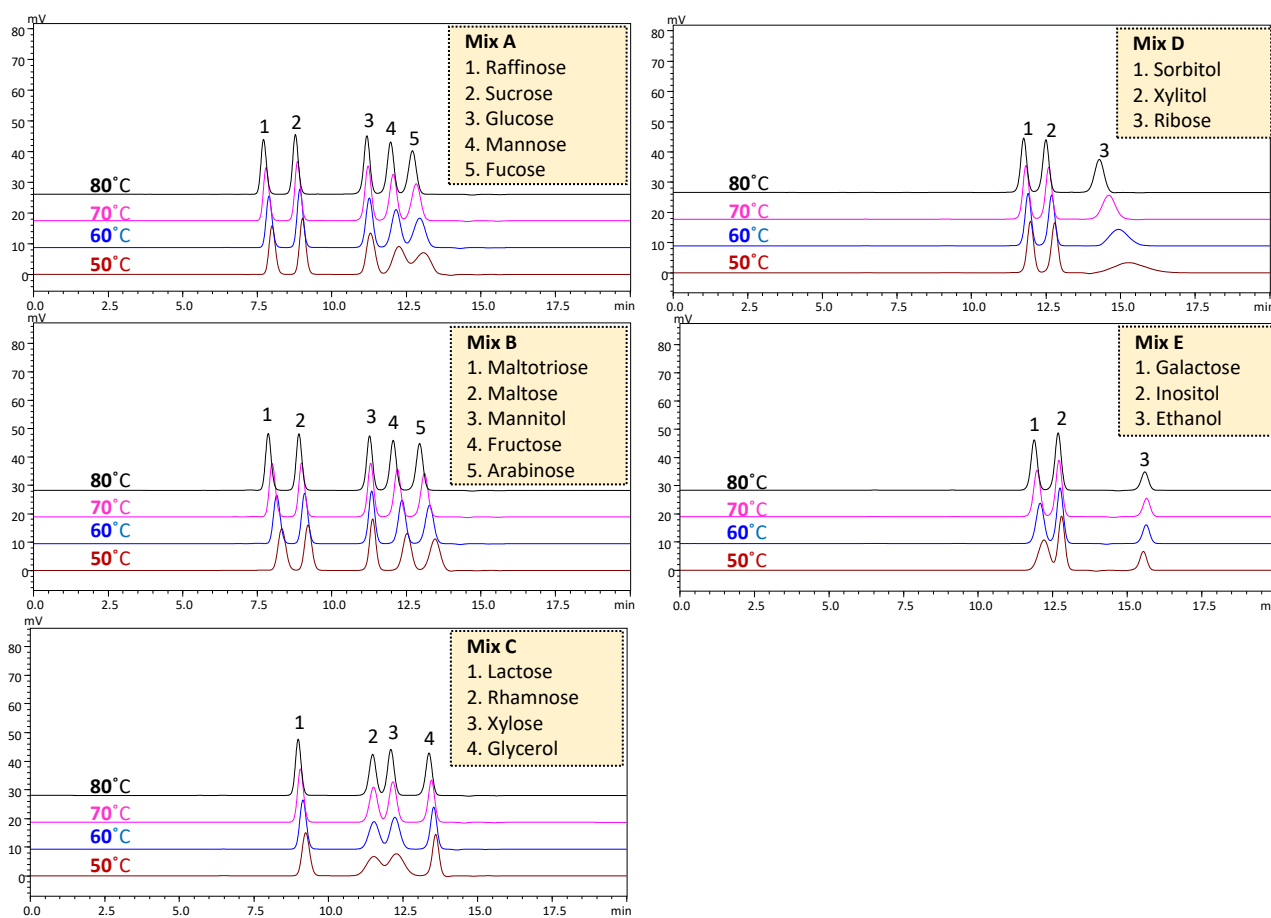


Shim-pack™ SUR-Na

Chromatogram of monosaccharides and sugar alcohols - Effect of temperature

Keywords: Retention index, Sugars



Instrument	: Nexera™ lite
Column	: Shim-pack SUR-Na (250 mm x 7.8 mm I.D., 8 μm) 1 pc, P/N : 228-59529-01
Guard column	: Shim-pack SUR-Na (G) (50 mm x 7.8 mm I.D., 8 μm), P/N : 228-59529-02
Mobile phase	: Water
Flow rate	: 0.6 mL/min
Column temp.	: 80°C, 70°C, 60°C, 50°C
Injection volume	: 20 μL
Detector	: RID

CoreFocus, Shim-pack and Nexera are trademarks of Shimadzu Corporation or its affiliated companies in Japan and/or other countries.